

TONTO NATIONAL FOREST  
PHOENIX, ARIZONA

SUPERSTITION WILDERNESS  
IMPLEMENTATION PLAN

Amendment No. 1

Effective Date: November 1, 1998

POSTING NOTICE: Amendments to this plan are numbered consecutively. After posting, retain this transmittal as the first page of this document.

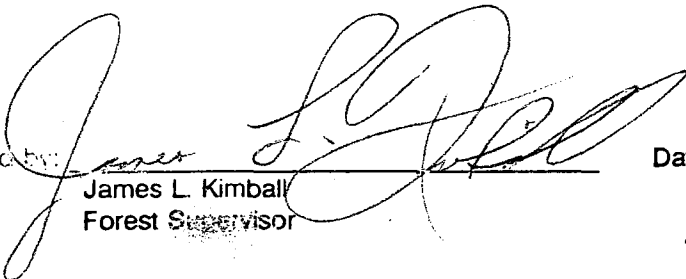
<u>Page Code</u>		<u>Superseded</u>	<u>New</u> <u>(number of pages)</u>
A-1 & 2	Appendix A	1	2
C-1, 2 & 3	Appendix C	3	3
H-1	Appendix H	1	1

Digest: Replaces out-dated Appendices with current ones.

*Thomas J. Klabunde*  
for: Charles R. Bazan  
Forest Supervisor

IMPLEMENTATION PLAN  
for the  
SUPERSTITION WILDERNESS

Prepared in compliance with the  
Tonto Land and Resource Plan that was  
approved on October 31, 1985

Approved by:  Date: 8/28/92  
James L. Kimball  
Forest Supervisor

Tonto National Forest



Southwestern Region, Forest Service, USDA



# TABLE OF CONTENTS

	Page
<b>I. INTRODUCTION</b>	1
<b>II. ADMINISTRATION</b>	3
A. Forest Service	3
B. Law Enforcement, Search and Rescue (Other Agencies)	8
<b>III. MANAGEMENT OF RESOURCES</b>	10
A. Management of Recreation	10
1. Visitor Management	10
2. Outfitter/Guides	14
3. Transportation System	18
4. Signing	21
5. Information and Education	23
B. Management of Range	26
C. Management of Wildlife, Fish, and Habitat	30
D. Threatened and Endangered Plants and Animals (Federally-Listed)	33
E. Management of Water Resources	35
F. Management of Forest Cover	38
G. Management of Air Resources	40
H. Management of Mineral Resources	43
I. Management of Cultural and Historic Resources	45
<b>IV. MANAGEMENT OF SUPPORT ACTIVITIES</b>	47
A. Management of Fire, Smoke, Forest Disease, and Insect Activity	47
B. Management of Land Occupancy and Use	50
C. Scientific Study	53

	Page
<b>V.RESOURCE INVENTORY AND MONITORING</b>	54
<b>GLOSSARY</b>	56
<b>APPENDICES</b>	
A. Special Orders Pertaining to the Superstition Wilderness and Adjacent Areas	
B. Approved Functional Plans Which Involve All or Part of the Superstition Wilderness	
C. Responsibilities for Authorizing Use of Motorized Equipment and/or Mechanical Transport	
D. Wilderness Opportunity Spectrum - Summary of Component Objectives for Each Opportunity Class	
E. Limits of Acceptable Change Indicators and Standards for the Superstition Wilderness	
F. Limits of Acceptable Change Indicators and Standards for Backcountry Camps in the Superstition Wilderness	
G. Superstition Wilderness Access Travel Management	
H. Grazing Allotments Covering the Superstition Wilderness	
J. Mining, Prospecting, and Searching for Treasure in Wilderness Areas on the Tonto National Forest	

# I. INTRODUCTION

## A. Background

The Superstition Wilderness is a special management area established by Congress, and "recognized as an area where the earth and its community of life are untrammelled by man, where man himself is a visitor who does not remain". This area is known both for the number and uniqueness of its Sonoran Desert plant species, as well as the riparian areas that offer valuable habitat to support the diverse wildlife species found in the Wilderness. The remote and rugged nature of the area provides the full range of wilderness qualities and activities. This Wilderness is also renowned for the legends of the Lost Dutchman and Peralta Gold Mines.

The influence of man has had a marked effect on the character and quality of much of the Superstition Wilderness. There are several uses and intrusions which have impacted the land. As public use and outside pressures continue to increase, effective management of the area is essential to ensure an enduring resource of Wilderness.

The Superstition Primitive Area was established by the Forest Service in February of ~~1939~~ <sup>1938</sup> under the L-20 Regulation. The U-1 Regulation reclassified the area as a Wilderness in April, 1940. Incorporated into the National Wilderness Preservation System on September 3, 1964, it contained 124,140 total acres. With the passage of the Arizona Wilderness Act of August 28, 1984, it was increased to 160,285 acres.

## B. Purpose

Federal law, Department of Agriculture regulations, Forest Service policy guidelines, and the Forest Plans serve a function of defining goals and setting direction for the National Wilderness Preservation System. Wilderness Implementation Plans must be consistent with these goals in the objectives they establish for various aspects of Wilderness management of particular areas. These objectives are attained by developing policies and implementing specific management actions that fulfill the management prescriptions described in the Forest Plans.

The purpose of this Implementation Plan is to further specify and act on the prescriptions found in the Tonto Land and Resource Management Plan (LRMP), approved October 31, 1985. Managing by objectives, this document describes current situations regarding the resource, makes assumptions for the period of the Plan, expands on policies within the guidelines of Forest Service Manuals (FSM), Handbooks (FSH) and the LRMP, and identifies action items designed to carry out this policy. These action items will be included in an Implementation Schedule which will include budget and target dates for accomplishment of actions. The objectives in this plan serve as criteria for identifying specific management policies and actions, as well as desired future conditions against which the effectiveness of management of the Superstition Wilderness can later be judged.

This plan can be of particular value to the District Ranger and District Staff, providing the consistency and frame-work needed for preparation of an Implementation Schedule, project work plans, and other functional implementation plans. It will also be useful to bring new personnel quickly up to date on the overall management of the Superstition Wilderness.

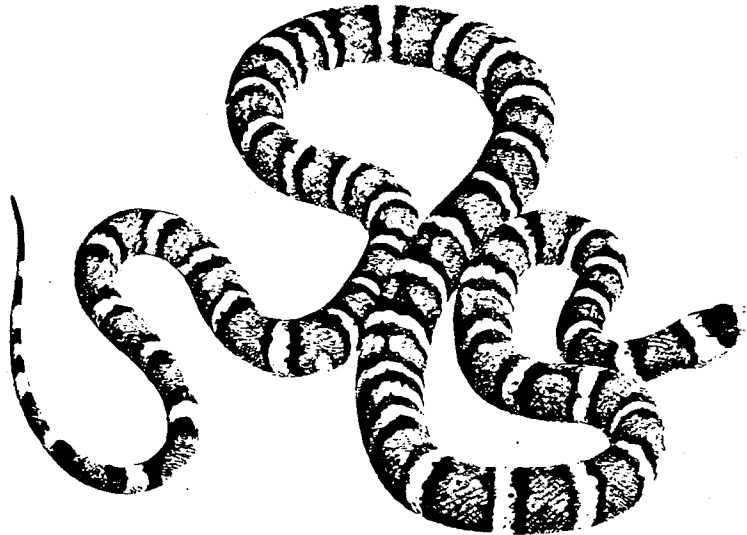
### **C. Review and Revision**

The management by objectives approach is a dynamic and on-going process requiring periodic review and assessment. This plan will guide management until it is reviewed and revised in conjunction with the planning process as directed by the National Forest Management Act.

1. Revisions of this plan will coincide with revisions to the Tonto LRMP. Revisions will have a target date of one year following revision to the LRMP. This plan may be amended to reflect amendments to the LRMP which effect management of the Superstition Wilderness.
2. This plan is organized in standard outline form with pages numbered sequentially and arranged in a loose leaf binder. This facilitates performing the needed revisions of certain parts of the plan without reproducing the entire document. Any amendment will be consistent with the LRMP unless appropriate action has been taken to amend that plan. Copies of the amended segments and pages of the plan will be numbered and dated much the same as a LRMP amendment. Copies will be forwarded to all holders of the plan with directions for replacement or deletion of revised segments and pages.

### **D. Supplementation**

Supplemental material may also be incorporated into this plan with the approval of the Forest Supervisor. Supplemental pages will be dated and numbered, and forwarded to all holders of the plan.



## II. ADMINISTRATION

### A. FOREST SERVICE

**Implementation Objective:** To preserve the integrity of the Wilderness resource; to provide uniform and consistent administration by the Ranger Districts; to conduct necessary administrative activities in a manner most protective of the Wilderness resource and visitor experience; and to initiate law enforcement action when necessary to insure Wilderness resource protection and public safety.

#### 1. Current Situation

- a. The Superstition Wilderness is administered by the Tonto National Forest. It lies within the jurisdiction of three Ranger Districts and three Counties.

##### RANGER DISTRICT APPROXIMATE ACREAGES

Ranger District	Acres	Percent
Globe	23,900+	15
Mesa	114,300+	71
Tonto Basin	21,800+	14
TOTAL	160,285	100%

##### COUNTY APPROXIMATE ACREAGES

County	Acres	Percent
Maricopa	84,500+	52
Pinal	73,000+	46
Gila	2,500+	2
TOTAL	160,285	100%

Administrative responsibility for management on each District is vested in the District Ranger and carried out under the technical supervision of a District Staff Officer.

- b. FSM 1236.41, Tonto Supplement #27 assigns lead management responsibility for the entire Wilderness to the Mesa Ranger District.
- c. The following Management Areas are found within this Wilderness:
- Management Area 2A - see LRMP, pages 73-75;
  - Management Area 3B - see LRMP, pages 94-96;
  - Management Area 3C - see LRMP, pages 97-99;
  - Management Area 6B - see LRMP, pages 172-174.
- d. Fieldwork is usually performed by one permanent, full-time Wilderness Staff-Assistant, and temporary full-time Wilderness Ranger(s) operating on the Mesa District. Foot travel, horses and/or mules are used as the primary means of travel.

- e. District employees periodically maintain portions of the trail system (see section III. A. 3., Transportation System).
- f. Volunteers are used to accomplish trail work and to serve as Wilderness Information Specialists.
- g. Regulations specific to Wilderness are in the Code of Federal Regulations (CFR) Parts 261.16 and 293. See Appendix A for a list of Forest Special Orders which pertain to this Wilderness.
- h. Some violations of Federal Law in the Wilderness occur through ignorance. Enforcement of regulations has been difficult due to the lack of sufficient personnel to patrol the Wilderness and its boundaries.
- i. There are a number of functional plans which will involve all or part of this Wilderness (e.g. range, travel management, etc). See Appendix B.
- j. The administrative communication system in the Superstition Wilderness is entirely dependent upon the high frequency radio. Due to the broken topography, many "dead spots" exist. A particular problem exists at the primitive trailhead camps at Peralta and First Water.
- k. Adjacent to and near the Wilderness boundary are a network of private and other agency lands and an expanding urban interface. Management practices on adjacent lands can influence the Wilderness in many ways. Roads constructed, maintained, or left open up to the Wilderness boundary provide access to non-wilderness oriented activities, such as off-road vehicle use and target shooting.
- l. The quality and quantity of administrative activities have varied widely in the past. The administrative costs of Wilderness management activities have been recognized and are reflected in budget requests, but funding continues to be limited. Because of these budget constraints, management effectiveness and efficiency is inadequate.
- m. The special requirements of Wilderness management do not fit into the 40-hour work-week structure. Coordination of activities can often be cumbersome.

## **2. Assumptions**

- a. The need for intensified Wilderness administration will continue to grow. Administration will become increasingly complex and need higher levels of competence and sensitivity. Increased inter-District coordination is vital to effective management.
- b. Wilderness management will be an increasingly important Forest Service activity. Coordination of all functional activities is essential.
- c. Law enforcement problems will increase as visitation increases; providing adequate law enforcement will continue to be difficult.
- d. With increased administrative responsibility and public use, the need for rapid and dependable communications will rise.
- e. Additional funding and personnel will be required to meet the objectives of this plan and to attain desired standards for Wilderness management.

- f. With continued budget constraints, increased reliance will need to be made on volunteers and service organizations serving in various capacities.

### **3. Implementation Policy**

- a. All administrative activities and functional plans will be developed to sustain and protect the Wilderness resource and allow a quality experience for its users. Field projects will be closely supervised and coordinated by the responsible manager to ensure consistency with the goals and objectives of this plan. The highest standards will be set and met by Forest Service personnel and volunteers.
- b. Motorized equipment use for administrative purposes must be approved on a case-by-case basis, by the appropriate line officer (see FSM 2326.04 and Appendix C).
- c. There will be joint training, frequent communications, and a consistent management approach between the Ranger Districts.
- d. Wilderness Rangers will be selected competitively based on their ability to perform the duties listed in the Wilderness Ranger Job Description.
- e. Manage for a Visual Quality Objective (VQO) of Preservation (see LRMP pages 73, 94, 97, 172, 234, and 257).
- f. No new administrative facilities or sites will be established in this Wilderness.
- g. All environmental analyses will assess impacts on not only the Wilderness resource, but on visitor experiences as well.
- h. Where livestock are used for administrative purposes, they will be so managed to minimize their impact on trails, camp sites, and the Wilderness resource. Administrative camping with livestock at popular sites will be done only when no other alternative exists. Any disturbance caused by the stock will be rehabilitated prior to breaking camp.
- i. All activities involving any function will follow the "minimum tool" concept.
- j. Emphasis of law enforcement will be on education. Discretion and good judgment will be used in issuing violation notices.
- k. Educational programs will emphasize the purpose behind restrictions and regulations, seeking public cooperation.
- l. Wilderness personnel will be knowledgeable of the Wilderness Act, CFR, Forest Special Orders, procedures for issuing violation notices, and first aid.
- m. Sensitive or dangerous law enforcement situations will be referred to the District Law Enforcement Officer and/or the appropriate Sheriff's Office.
- n. To promote joint understanding of the purposes of Wilderness, a close working relationship will be maintained with the public, and all State, County, and Federal agencies that utilize or influence use of the Superstition Wilderness.

- o. Wilderness Rangers and volunteers will present a positive image to the public. This includes good personal hygiene and a neat appearance. Wilderness personnel will wear a complete Forest Service field uniform, except when performing specific activities where some other type of clothing is needed. Partial uniforms will not be worn. Riding boots (packers or western type) may be worn while riding horseback. T-shirts may be worn under certain conditions approved by the District Ranger. If t-shirts are worn, they will only have "Forest Service" printed on the back; "Tonto National Forest" will be printed on the front, with other information optional.

#### **4. Implementation Actions**

- a. To aid in the implementation of this plan and the coordination of management efforts, permanent full-time Wilderness Staff-Assistant Officer and Wilderness Ranger positions will be filled on the Mesa Ranger District when personnel ceilings and budget constraints permit. The Wilderness Staff-Assistant Officer will be responsible for initiation and completion of specific, coordinated management actions and related activities called for in this plan on the Ranger Districts involved. The Wilderness Ranger will function primarily in the field, using first-hand information gained there to initiate recommendations and set priorities for management actions.
- b. The Mesa District will schedule Wilderness Rangers for maximum Wilderness coverage after coordination with the Tonto Basin and Globe Districts. Personnel of these two districts will assure that Mesa Wilderness managers are fully apprised of all types of proposals and activities within their sections of the Wilderness.
- c. During the period that budget constraints do not allow filling the permanent positions, one or more temporary full-time Wilderness Rangers will be fielded by the Mesa Ranger District. These individuals will be responsible for carrying out the provisions of this plan under the supervision of the District Wilderness Staff-Assistant. Their efforts will be supplemented by volunteers and Wilderness Information Specialists (WIS).
- d. Mesa District will develop a five-year Implementation Schedule coordinated with other involved districts (FSM 2322.1). It should be brief (probably not more than five pages in length), and will include significant prioritized actions from this plan and work projects. It will also include unit or individual responsibility, target dates, and budget. It will be reviewed and revised annually (the annual spring meeting should be an opportunity to coordinate maintenance/organization of the schedule).
- e. The WIS program will be implemented during the fall, winter, and spring seasons. Their objectives are to make visitor contact and conduct environmental education at trailheads and in the backcountry, and to work on trail maintenance, resource inventory, and backcountry rehabilitation, as outlined in the Wilderness Operations Booklet on file at the Mesa District office.
- f. Semi-annual meetings between involved Superstition Wilderness administrative units will be scheduled. The Mesa District will be responsible for coordinating both meetings.
  - (1) The objective of the spring meeting, held prior to April 1st, will be to confirm and coordinate management activities, priority projects, etc., for the summer use season.

- (2) The objective of the fall meeting, held prior to October 1st, will be to review the summer season management actions, coordinate winter season actions, and prepare program work projects for the upcoming fiscal year.
- g. The District Wilderness managers will complete pertinent components of the interagency "Wilderness Management Correspondence Study Course" offered through Colorado State University. These managers will also participate in Forest, Regional, and National training when appropriate.
  - h. Seasonal Wilderness Rangers will participate in periodic joint training sessions for all Forest Wilderness Management personnel.
  - i. Long-term Wilderness field personnel will receive a minimum of Level 2 law enforcement training. They will be instructed to use extreme care and common sense when making law enforcement contacts.
  - j. Seek newspaper publicity of violations in a timely manner when this may serve to prevent similar violations in the future.
  - k. To monitor VQO, permanent photo points will be established (see section V., Resource Inventory and Monitoring).
  - l. With input from other involved Districts, an annual report will be prepared by the Mesa District. It will summarize the year's activities and accomplishments. Appropriate inventory data, photos, etc., will be included; it will serve as the basis of the Forest's Annual Report to Congress for this Wilderness.

## **B. LAW ENFORCEMENT, SEARCH AND RESCUE (Other Agencies)**

**Implementation Objective:** To cooperate with other government agencies in law enforcement and search and rescue, while monitoring their activities to insure consistency with Wilderness policies. (See FSM 2326 and 5360.)

### **1. Current Situation**

- a. Search and rescue is the responsibility of the County Sheriff Departments (by state law). Search and rescue efforts must be financed by the local Sheriff's Office, putting an additional strain on County budgets.
- b. Occasionally, law enforcement and search and rescue efforts by other agencies involving the use of motorized equipment has not received prior approval through proper channels.
- c. Based on the Memorandum of Understanding with Pinal County, a Range Deputy has been assigned who helps patrol this area and also sometimes acts as Search Coordinator in search/rescue operations. Tonto Forest also has a Memorandum of Understanding with Maricopa County, but no Range Deputy is assigned to the Wilderness.
- d. Helicopter landings for searches, rescues, and law enforcement occur several times per year.

### **2. Assumptions**

- a. The use of motorized equipment for search and rescue operations within the Wilderness will continue.
- b. Additional searches and rescues will cause additional budgetary problems for involved counties. Sheriff's Departments will sometimes not understand or act consistently with Wilderness policies.

### **3. Implementation Policy**

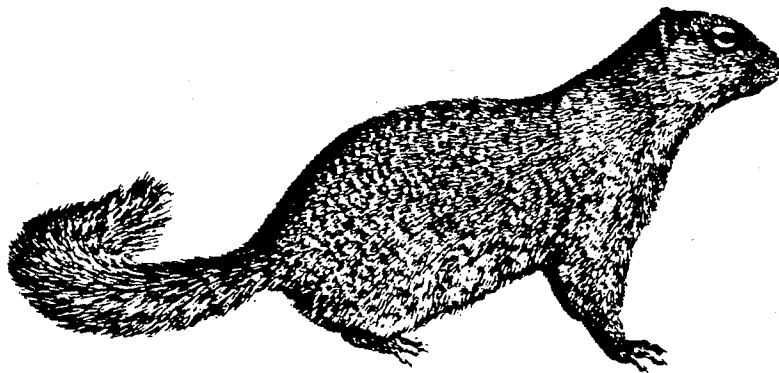
- a. FSM 2326.1 has delegated to the Forest Supervisor the authority to approve/disapprove the use of motorized equipment or mechanical transport in Wilderness when the situation involves an inescapable and temporary need for speed beyond that available by primitive means. See Appendix C for more details.
  - (1) The Forest Supervisor has approved the landing of all helicopters within Wilderness Areas of the Tonto Forest in search and rescue situations when the situation involves an inescapable urgency and temporary need for speed beyond that available by primitive means, and the situation involves public health and safety of a "life or death" nature (see FSM 2326.04c, Tonto Supplement #13).
  - (2) The Forest Supervisor has delegated to the Forest Recreation/Wilderness Staff Officer (in consultation with the involved District Ranger and Forest Aviation Staff Officer or their representatives) the authority to approve/disapprove the landing of helicopters or dropping/picking up materials, supplies, or persons when the situation is an emergency requiring speed

beyond that available by primitive means, and (a) is for law enforcement involving a serious crime and/or fugitive pursuit, or (b) is for other search and rescue situations not judged "life or death" in nature, or (c) is for the removal of a human body, or (d) is for the official investigation of an aircraft accident (see Tonto Supplement #13 referenced above).

- b. So that an accurate Annual Report to Congress can be prepared, each agency using helicopters or other types of motorized equipment will be requested to submit an annual report of such use.

#### **4. Implementation Actions**

- a. The Forest Staff responsible for law enforcement will coordinate with appropriate Sheriff's offices to assist them in developing an annual operating plan for search, rescue, and law enforcement assistance.
- b. Local County Sheriff's Departments, Posses, and other agencies involved in law enforcement and search and rescue, will be informed of Wilderness ethics and regulations, particularly appropriate authorization for use of motorized equipment and aircraft. Wilderness personnel and Forest Service Law Enforcement Officers will develop a close working relationship with county Law Enforcement personnel.
- c. The District Ranger will confirm that search and rescue situations involving motorized equipment are of a "life or death" nature. See item 3. a. in this section.
- d. Close coordination will be maintained with individuals in charge of search and rescue operations to insure timely requests for use of motorized equipment.
- e. The District Ranger will assign a qualified Advisor to coordinate search, rescue, and law enforcement activities with other agencies.



### III. MANAGEMENT OF RESOURCES

#### A. MANAGEMENT OF RECREATION

##### 1. VISITOR MANAGEMENT

**Implementation Objective:** To provide for primitive recreation, solitude, physical and mental challenge, and/or inspiration, as long as these activities are consistent with preservation of the Wilderness resource. (For information concerning limits of acceptable change (LAC), see section V., Resource Inventory and Monitoring.)

##### a. Current Situation

- (1) Diverse recreation opportunities available in the Superstition Wilderness attract visitors with a wide variety of interests.
- (2) Less use occurs during May, June, July, and August. There is also a lull in the high country during the winter months of December, January.
- (3) Individuals and organized groups of many sizes use the Superstition Wilderness for a considerable amount of backpacking and horsepacking. Some of these users have caused impacts on the more popular campsites and destination areas. Backcountry camp inventories show unsatisfactory conditions such as vegetative trampling, inadequate disposal of human waste, littering, and the cutting of live and standing dead vegetation for fuelwood. Site examples include: Boulder Basin, Bluff-Crystal Springs, Pinyon Camp, Charlebois Spring, La Barge Spring, Angel Basin, and Reavis Ranch.
- (4) Visitor group size is limited by Forest Special Order 12-59-R to 15 persons throughout the Wilderness ~~and 25 persons in two designated zones~~. There is no limitation on numbers of recreational livestock.
- (5) Wilderness visitor use ranges from very light to very heavy. The rate of increase has leveled off in the heaviest used backcountry areas, but day use continues to increase in several areas close to the Phoenix metropolitan area, such as First Water and Peralta. Some areas of the eastern Superstition Wilderness are also receiving increased use, especially the Reavis Ranch area.
- (6) There is evidence that some visitors' horses are causing damage to vegetation, especially when tied to trees or large shrubs.
- (7) Some visitors have created new trails which are short-cuts or reach a favorite site. Some of these routes cause erosion or other damage to the land.
- (8) There are several rock climbing routes in the Wilderness that have undergone extensive "bolting". A moratorium on installation and/or removal of bolts was put into effect pending a national policy decision. This plan will be amended to reflect this policy after it is finalized.
- (9) All or parts of certain trails are not recommended for horse travel because of their rugged nature and/or frequent contact with hikers. These are: Peralta Canyon Trail # 102; Boulder Canyon Trail #103; Red Tanks Trail #107; Frog Tanks Trail #112;

Fireline Trail #118; Haunted Canyon Trail #203; Bluff Springs Trail #235; and the Cave Travelway.

- (10) Many visitors carry firearms into the Wilderness and on other Forest lands. Forest Special Order 12-59-R prohibiting the use of firearms in the Wilderness, except for legal hunting, is in effect.
- (11) Vehicle intrusions into the Wilderness have occurred. Forest Special Order 12-90 prohibits the use of vehicles on certain trails providing access to the Wilderness. See section IV. B., Land Occupancy and Use, for policy concerning this matter.
- (12) Camping at First Water Trailhead for more than two nights is prohibited by Forest Special Order 12-75-R.

**b. Assumptions**

- (1) Recreational use of the Superstition Wilderness will continue to increase due to the population growth and the seasonal influx of winter visitors and tourists in the Phoenix metropolitan area.
- (2) Unless altered by management, use will continue to concentrate at popular and heavily-used locations.
- (3) Severe levels of impact occur to specific sites even at very low levels of use. Further impact is minor, except for the tendency of sites to expand in area as they continue to be used. Reducing the use a site receives will do little, by itself, to improve site conditions.
- (4) Many Wilderness visitors will continue to desire solitude. Studies have shown that the experience of some Wilderness visitors can be unsatisfactory if they have more than a few daily encounters in the backcountry.
- (5) Large parties are especially disliked by some Wilderness visitors. Consistent limitations are required to reduce resource impacts and to maintain the aspect of solitude in Wilderness.
- (6) As visitor use continues to increase, so will the need for management action based on established LAC and Wilderness Opportunity Spectrum (WOS) objectives. See section V., Resource Inventory and Monitoring.
- (7) The pattern of horse use by visitors to this Wilderness is shifting from multi-day tours to one-day rides, and there is less need for extra livestock to carry supplies.
- (8) Satisfactory distribution and/or limitation of people and recreation pack and saddle stock will be necessary to prevent further damage to Wilderness values.
- (9) Many visitors will continue to enter the Wilderness in pursuit of recreation activities not dependent on a designated Wilderness. Non-Wilderness alternatives for these activities will need to be further developed and publicized.
- (10) Disposal of human and livestock waste within the Wilderness will continue to be a problem at some sites but will not require specific management actions other than continued efforts to educate visitors.

### **c. Implementation Policy**

- (1) In the management of recreation use, emphasis will be directed toward those uses which create the most long-lasting impacts on the Wilderness resource. Any conflicts will be resolved in favor of Wilderness-dependent uses.
- (2) A wide spectrum of Wilderness recreation opportunities will be preserved, consistent with established objectives of the WOS classifications for this Wilderness. The intensity of management activities and/or restrictions will conform to the objectives for each WOS Class. See the WOS Class descriptions in Appendix D and the Superstition Wilderness WOS Class map.
- (3) Any management actions designed to reduce recreational impacts will be based on achieving the standards set in the LAC process for the Wilderness. See Appendices E and F for LAC indicators and standards relating to visitor management.
- (4) Any management developments related to recreation use must be necessary for the protection of the Wilderness resource and not for the convenience of users. Authorized developments will be constructed of materials which harmonize as much as possible with the surrounding environment.
- (5) Visitor education will emphasize "no-trace camping" and Wilderness philosophy including proper disposal of human waste, removal of litter, proper use of livestock, water protection, proper use of fire, and the purpose of Wilderness designation.
- (6) Installation of posts for picket lines, temporary corrals, etc., for recreation stock will only be authorized if *essential* to protect the Wilderness resource and when alternative means have failed.
- (7) Direct regulations limiting visitor numbers in critical areas will be preceded by efforts to reduce impacts by other methods, such as visitor education and other indirect means. See FSH 2309.19, chapter 21.11a for a list of indirect visitor management techniques.
- (8) If managers are unable to protect the Wilderness resource and experience by the above actions or other measures, the amount and/or kind of use will be reduced (on a site specific basis) to levels necessary to prevent deterioration of the Wilderness resource or experience.
- (9) If a latent danger (a hazard not readily apparent to a prudent visitor) is discovered on or near trails or trailheads and requires more than a public warning, a thorough analysis will be made of the situation, and appropriate actions will be taken without delay.
- (10) See section III. C., Wildlife, Fish, and Habitat, for policy concerning non-indigenous animals (horses, dogs, etc.) in the Wilderness.

### **d. Implementation Actions**

- (1) Modification to the group size limitation will be studied through LAC monitoring. Making the Forest Order consistent throughout the Wilderness at a limit of 15 will be considered. *Done*

- (2) Groups which exceed the group size limits will be divided into groups of 15 or less (~~or 25 as appropriate~~) and be separated by a one hour time interval. If these separated groups camp overnight, each camp will be out of sight of the other.
- (3) A Forest Special Order to limit recreational livestock to 15 head per user group will be considered. This issue will be studied through LAC monitoring of the Wilderness and with information from similar studies in other Wilderness Areas. *Done*
- (4) Wilderness Management personnel will seek to educate visitors concerning proper disposal of body wastes, removal of litter, and other minimum impacts concepts. Litter bags should be given to groups contacted by a Wilderness Ranger. (See section III. A. 5, Information and Education.)
- (5) Wilderness Management personnel will seek to educate recreational stock users in using the method of livestock management that will cause the least possible impact on the Wilderness resource, with specific emphasis on riparian areas and water sources. Forest Special Order 12-59-R prohibits unauthorized grazing in the Superstition Wilderness.
- (6) "Dry camps" (completely away from springs and riparian areas) will be promoted as an alternative to the traditional camp on or near water.
- (7) Monitor all LAC indicators relating to visitor management. Inventory and evaluate all known campsites in the Wilderness. Take prompt corrective action commensurate with the degree an LAC standard is violated. This could include rehabilitation and/or closure of certain areas by Forest Special Order. (See section V., Resource Inventory and Monitoring).
- (8) Implement and enforce regulations and Forest Special Orders to ensure conformance with LAC standards.
- (9) Inventory and closely monitor the number of holes drilled and bolts installed on climbing routes, plus all related impacts. Issue warnings or citations when any person is discovered drilling holes or inserting bolts in violation of the moratorium.
- (10) Horse users will be encouraged to provide processed feed for their livestock.
- (11) Horse users will be advised of trails which are not recommended for horse travel.
- (12) Visitors not seeking a wilderness experience will be encouraged to visit other portions of the National Forest lands that can better provide for their recreational needs.
- (13) Visitors will be discouraged from taking dogs into the Wilderness. Owners will be encouraged to have all dogs on a leash, unless involved in legal hunting activities. Restrictions or prohibitions will be implemented where specific problems arise.
- (14) Visitors will be informed of the Forest Special Order prohibiting the use of firearms in the Wilderness (except when engaged in legal hunting activities). Hunters will be encouraged to avoid popular and heavily-used areas.
- (15) Actively enforce the two night camping limit at First Water Trailhead.

## **2. OUTFITTER/GUIDES**

**Implementation Objective:** To allow outfitter and guide services which are proper for realizing the recreational or other purposes of the Superstition Wilderness; and to manage these activities to be within the social and biological capacity of the Wilderness and compatible with the use of other Wilderness visitors. (See FSH 2709.11 and 2309.19, chapter 21.13. See section III. A. 1, Visitor Management, for objectives applying to all visitors.)

### **a. Current Situation**

- (1) Horse and hiking outfitter/guides may be authorized to operate in this Wilderness. Available allocations are in the LRMP and are also listed in Chart 1 of this plan (page 17).
- (2) In-the-field contacts and performance evaluations are infrequent due to limited patrols by Wilderness Rangers.
- (3) Some outfitting/guiding (particularly for hunting) has been conducted without the benefit of a Special Use Permit.
- (4) There is evidence that some guides' horses are causing damage to trees and shrubs while tied to them, especially when they return to the same site on a recurring basis.
- (5) All or parts of certain trails are not suitable for horseback use because of their rugged nature and/or frequent contact with hikers. These are: Peralta Canyon Trail, Boulder Canyon Trail, Red Tanks Trail, Frog Tanks Trail, Fireline Trail, Haunted Canyon Trail, Bluff Springs Trail, and Cave Travelway.
- (6) Some outfitter/guides have created new trails which are short-cuts or reach a favorite site. Some of these trails are damaging to the land.
- (7) Authority is delegated to each Forest Supervisor to annually authorize outfitter/guides statewide on National Forest lands.
- (8) The "Don's Club" of Phoenix has a lease on 28 acres of Forest land adjacent to the Wilderness boundary near Peralta Trailhead. They conduct an annual "Don's Trek" in which approximately 2,000 people attend a festival which includes guided hikes into the Wilderness. Their hiking groups have often exceeded the group size limitation.

### **b. Assumptions**

- (1) Outfitted use increases the potential for exceeding LAC standards for the Wilderness resource. However, outfitter/guides provide visitor education as encouraged through partnerships.
- (2) Improved knowledge and practice of low impact camping and backcountry ethics by outfitters will reduce their impacts on the resource, as well on as the experiences of other visitors.

**c. Implementation Policy**

- (1) The allocation of outfitter/guide services established by the LRMP will be adhered to. Adjustments to these allocations must follow the National Environmental Policy Act (NEPA) process.
- (2) Where significant damage by horses to shrubs and trees is found, such sites will be excluded from permitted use until the site has recovered or until other measures have been successfully accomplished. Potential impacts to alternative sites will be considered before closure is enacted. Adjustment to allocations is a possible action.
- (3) All outfitter/guide operations will be covered by an approved Operating Plan. Priority outfitter/guide performance must be evaluated each year to ensure that all permit and operating plan requirements are being met.
- (4) Special attention will be directed by all involved personnel in the discovery of unauthorized (pirate) outfitter/guide activity. Aggressive enforcement action by the appropriate Forest Officer will follow.
- (5) Base camps for outfitting/guiding activities will not be permitted within the Wilderness.
- (6) Horse outfitters will supply processed feed for their livestock while within the Wilderness. No grazing will be allowed as per Forest Special Order 12-59-R.
- (7) Use of overnight camps outside the Wilderness, and the use of "dry camps" (completely away from springs and riparian areas) will be strongly encouraged.
- (8) No commercial pack or saddle stock will be allowed to be kept overnight within 200 feet of a natural water source.
- (9) Overnight and day-use with outfitter livestock at Charlebois Spring will be excluded from the outfitter/guide permits.
- (10) Horse use on the Cave Travelway and Red Tanks Trail #107 through the Upper La Barge Box will not be permitted. Horseback outfitter/guide activities will not be allowed on the Peralta Trail during weekends <sup>and holidays</sup> from November 1st through April 30. Other trails will be considered for closure to guide use as appropriate.
- (11) All operating plans will contain specific directions regarding the proper disposal of human and livestock waste.
- (12) Outfitter/guides will be limited to the use of system trails only. The creation of new trails for short-cuts and loops is prohibited.
- (13) The Don's Club guided hikes will be conducted as per a current Operation Plan which emphasizes group size limits and backcountry ethics. Presentations will distinguish between legends/tall tales and verifiable facts related to the Superstition Mountains with emphasis on the latter.

*Bluff Spr. Tr. 235 from Peralta TH to set w/ Terrapin Tr. 234  
Red Tr. 107 from Upper L.R. Box to set w/ H. Base Tr. 111  
Bulder Tr. 103 from Marana TH to set w/ 2nd water Tr. 15  
Dutcher Tr. 101 from Peralta TH to 2nd water Tr. 103*

**d. Implementation Actions**

- (1) Conduct annual evaluations of all outfitter/guide priority permit holders.
- (2) Hold an annual coordinating meeting for outfitter/guides, their employees, Forest Service employees, and volunteers.
- (3) Develop Annual Outfitter/Guide Operating Plans which incorporate appropriate standards and policies.
- (4) When appropriate, guests of outfitted parties will be contacted in the backcountry by Wilderness personnel to present minimum impact concepts, etc. Through partnerships, outfitter/guides will be encouraged to offer these concepts to guests.
- (5) Wilderness Rangers will be aware of all permit clauses and regulations pertaining to outfitter/guide activities. They will have a copy of each involved Operating Plan for use when making in-the-field contacts. They will assist in the preparation of annual performance evaluations where called for.

**Chart No. 1: OUTFITTER/GUIDE SERVICE ALLOCATION**

Type of Service	Class of Permit	No. of Permits	Maximum Service Days Per Permit	Total Service Days Per Year
<b>Management Area 3C: Western Superstition Wilderness</b>				
Horse/Mule	Priority/Temporary Pool*	3 N/A	1,200 50	3,600 350
Hiking	Priority/Temporary Pool*	3 N/A	400 50	1,200 200
Hunting	See LRMP, page 68; Management Area 1F.			
<b>Management Areas 2A, 3B, 6B: Eastern Superstition Wilderness</b>				
Horse/ Mule	Priority/Temporary Pool*	3 N/A	400 50	1,200 350
Hiking	Priority/Temporary Pool*	3 N/A	400 50	1,200 200
Hunting	See LRMP, page 68; Management Area 1F.			

\* This is a pool for short-term permit holders, with an absolute ceiling of 50 service days per type of service, per holder, per season. No portion of this pool may be used by any Priority/Temporary permit holder, nor may any of these pool-users use any part of the Priority/Temporary allocation.

This allocation may be adjusted upward or downward by the Forest Supervisor after analysis through the NEPA process.

### 3. TRANSPORTATION SYSTEM

**Implementation Objectives:** To maintain appropriate access to and within the Superstition Wilderness that minimizes physical and visual impacts on the Wilderness resource, while promoting a safe, quality wilderness experience for visitors. (See FSM 2323.13f.)

#### a. Current Situation

- (1) The early trail system covering the Wilderness was a haphazard composite of trails made by miners, stockmen, and settlers. Today, the trails are primarily used for recreation activities, and visitors number in the thousands .
- (2) The present trail system is established as shown in RIM-TRAILS, and is depicted on the Forest Quad-maps and on the Superstition Wilderness Map. Wilderness users often indicate a preference for a trail system that is unobtrusive and merely a way through the country.
- (3) A wide variety of recreation opportunities exists within the Wilderness: maintained system trails, unmaintained travelways, and trail-less areas.
- (4) Portions of the transportation system contribute to management problems by concentrating visitors in heavily used areas and at favored attractions. Inadequate maintenance of existing trails is a contributor to accelerated erosion and could be a hazard to the public.
- (5) Trail maintenance is presently handled by seasonal District trail crews, seasonal Wilderness Rangers, and volunteers.
- (6) There are over 23 entry points by trail into the Wilderness, but only 10 are recognized as trailheads. Three State highways provide access to Forest Roads leading to entry points. A few of these roads may be traveled by passenger car.
- (7) The Peralta, First Water, Canyon Lake, Roger's Trough, Woodbury, and Reavis Trailheads have limited facilities available. Other trailheads are essentially undeveloped.
- (8) Short-cutting a switchback on a Forest development trail is prohibited by Forest Special Order 12-59-R.
- (9) The Arizona Trail has been designated to encompass Two Bar Ridge Trail #119 and parts of Reavis Ranch Trail #109 and Reavis Gap Trail #117.

#### b. Assumptions

- (1) Travel by some types of users, especially day hikers, will increase.
- (2) Unless controlled, informal marking of and repeated use of certain cross-country travel routes will lead to the establishment of new non-system trails.
- (3) If the entire system of trails is not regularly maintained, use will concentrate on the more well-known heavily-used trails.

- (4) Some visitors will continue to want high-standard trails and additional access routes to the area. Other users will favor lower standard trails (or no trail system) and primitive access.
- (5) The Arizona Trail designation may increase use in the Wilderness.

### **c. Implementation Policy**

- (1) Trails are an acceptable facility in this Wilderness. They are meant to protect the Wilderness resources as well as provide for visitors' safety (rather than convenience). Wilderness trails will be safe, but fit into the natural landscape as unobtrusively as possible, offering the visitor an element of adventure, challenge, solitude, and a sense of pioneering.
- (2) Certain areas will be kept free of trails to provide opportunities for unaltered terrain, scientific study, cross-country travel, and to adhere to Class I objectives of the WOS.
- (3) The coverage of the Wilderness by the existing trail system is adequate. System trails will not be opened by new trail construction without Forest Supervisor approval. The Forest Supervisor may also add existing unmaintained travelways to the system after appropriate evaluation.
- (4) The Tonto LRMP calls for specified levels of trail maintenance:

Management Area 2A - see page 74;  
Management Area 3B - see page 96;  
Management Area 3C - see page 99;  
Management Area 6B - see page 173.

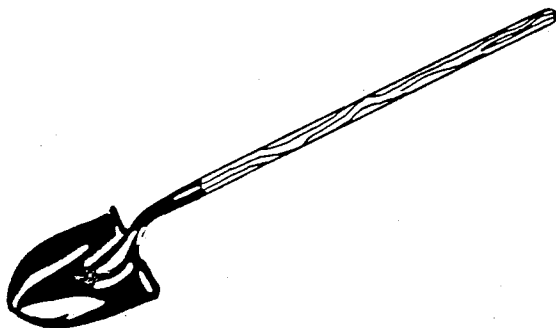
These maintenance levels are described in FSH 2309.18, Tonto Supplement #1.

- (5) See section III. F., Management of Forest Cover for policy concerning the use of native wood material.
- (6) Erosion control is a top priority. Short portions of trail will be reconstructed or relocated to prevent serious erosion or resolve serious safety hazards. Immediate action will be taken where a serious latent danger (a hazard not readily apparent to a prudent visitor) is involved. Such heavy maintenance will be done consistent with the objective difficulty levels established in RIM-TRAILS (see FSH 2309.18).
- (7) In any trail relocation, switchbacks will be avoided whenever possible. When needed, they will be built to FSH standards.
- (8) All trails will be maintained with primitive skills (i.e. no motorized equipment or mechanical transport).
- (9) Project work markers (flagging, tags, etc.) will be removed immediately upon the completion of any project.
- (10) Trailheads developed near or adjacent to the Wilderness boundary will provide facilities necessary to ensure resource protection, but will not be promoted for camping. If camping detracts from their intended use (Wilderness access), appropriate action will be taken to curtail such activity.

- (11) Trail maintenance standards will not be altered by the Arizona Trail designation. Maintenance levels as established by the Tonto LRMP will be adhered to.
- (12) See Appendix G for Wilderness Access Travel Management concerning management of roads specifically accessing the Superstition Wilderness.
- (13) The construction of new access roads or trailhead facilities will be evaluated through the NEPA process to determine any effects on the Wilderness resource due to changes in use patterns and numbers of visitors.
- (14) Non-system trails will not be maintained.
- (15) Trail maintenance programs among the three Districts will be fully coordinated. When a part of one trail is worked on one District, the remainder will also be worked (if needed) on the other involved District(s).
- (16) Blazes will only be used where absolutely necessary. New blazes will not be chopped in with axes; appropriate tools will be used by experienced personnel. Under no circumstances will old blazes be re-cut or enlarged.
- (17) Wilderness trailheads subject to potential or existing vehicle trespass will be posted and/or protected by barrier facilities. The "M"-shaped barrier or something similar will be used as needed to obstruct vehicles yet allow passage of visitors and riding or pack stock.

#### **d. Implementation Actions**

- (1) Administer a coordinated Wilderness access road and trailhead management program consistent with the Forest Resource Access/Travel Management (RA/TM) plan and Appendix G.
- (2) All Forest trail personnel will undergo training (using aids such as videos, etc.) and become familiar with the Routine and Heavy Wilderness Trail Maintenance Standards (FSH 2309.18, Tonto Supplement #1).
- (3) Short-cut trails will be blocked off, obliterated, and restored to as near natural condition as possible. The practice of placing flagging, cairns, etc., to mark non-system trails will be discouraged, and when found, such markers will be removed or obliterated.



#### 4. SIGNING

**Implementation Objective:** To provide signs where necessary for visitor orientation, safety, resource protection, and boundary identification. (See FSM 2324.33f.)

##### a. Current Situation

- (1) Most trail signing has been accomplished within the Superstition Wilderness, based on the existing sign plan; however, continued maintenance and replacement is required.
- (2) Present Forest Service Wilderness signing policy specifies the use of specially shaped (five-sided) rustic lumber signs with routed characters (see FSH 7109.11, chapter 52.81).
- (3) Both metal signs and decals for carsonite posts are available for boundary posting.
- (4) Present information and administrative signing at Wilderness trailheads is often inadequate. Maintenance of signing is difficult due to continuing vandalism.
- (5) There is a continuing problem with keeping adequate signing along the boundary at vehicle invasion points due to theft and vandalism.
- (6) The need for signs has been reduced with the development of an accurate map and recreation opportunity guide (ROG) which include up-to-date descriptions of management expectations for appropriate visitor behavior and activity.
- (7) The Arizona Trail has been designated to include all or parts of Two Bar Ridge, Reavis Ranch, and Reavis Gap Trails.

##### a. Assumptions

- (1) There will be conflicting views expressed by the public as to where signs should be placed, and (if they give mileage) on whether or not they are accurate.
- (2) There will continue to be long delays between the time signs are stolen or destroyed, and when they are replaced.

##### c. Implementation Policy

- (1) Trail signs will be provided for visitor safety, not for convenience (FSM 2324.33f). They will be based on the Wilderness (or District) Sign Plan.
- (2) Unless *essential* for protection of the Wilderness resource, signs will not be placed:
  - in trail-less areas;
  - on non-system trails;
  - to identify natural features or destinations;
  - to provide for on-site interpretation.

- (3) Signing at Wilderness trailheads will be limited to trail direction signs, boundary signs (if appropriate), and official information displays such as regulations governing use of the Wilderness, suggested visitor behavior, and fire prevention.
- (4) If signing is needed within the Wilderness for protection of the resource, Forest Supervisor's approval is needed before posting. Location and wording of such signs will be carefully planned to minimize any adverse impact on the visitor's wilderness experience.
- (5) Trail signs will show only the trail name and number, but no destinations or mileages will be given. Information on no more than one trail per sign will be given.
- (6) Interior signing will be rustic five-sided white oak signs with routed, blackened letters. Signs will be solid (not plywood) and will be ~~grey-stained initially and then~~ allowed to weather naturally.
- (7) Wooden Wilderness entrance signs will be five-sided grey-stained plywood with routed letters.
- (8) Signing on trails outside but adjacent to the Wilderness will be standard four-sided signs and be finished in a manner (natural, stain, or paint) consistent with other trail signs on the district.
- (9) See Appendix G for placement of directional signing on access roads leading to trailheads.
- (10) There will be no additional signing within the Wilderness for the Arizona Trail. "Branding" sign posts or the back sides of trail signs with the Arizona Trail symbol is acceptable.

#### **d. Implementation Actions**

- (1) Maintain the Sign Plan for the Superstition Wilderness, coordinated between involved districts, the Forest Sign Coordinator, and the Recreation/Wilderness branch of the Forest Supervisor's Office.
- (2) Wilderness boundary signs will be posted at all known entry points and areas accessible to vehicle trespass (see section IV. B., Management of Land Occupancy and Use).
- (3) Information signs (bulletin boards) will be placed at Peralta and First Water Trailheads during the fall, winter, and spring seasons. The signs may be removed during the summer to prevent vandalism.
- (4) Information signs will be placed at other major trailheads on a priority basis as we have the ability to maintain them in a quality condition.
- (5) Existing interior signing and wooden Wilderness entrance signs will be fully converted to the styles described above in policy items (6) and (7) as soon as practical.
- (6) During patrols, Wilderness Rangers may carry pre-cut Wilderness signs that can be temporarily installed when signs are discovered missing. Needed information will be filled in, using waterproof felt-tip pens.

## **5. INFORMATION AND EDUCATION**

**Implementation Objective:** To make information about the Superstition Wilderness available to all persons requesting it, but without advertising or promoting its use; to divert use not dependent on the Wilderness to alternative areas; to provide information that will minimize visitor impact on the resource and encourage voluntary compliance with restrictions. (See FSH 2309.19, Chapter 21.11b.)

### **a. Current Situation**

- (1) Wilderness Rangers and Wilderness Information Specialists (WIS) carry out an active trailhead and in-town education program. This program is financed and carried out by Mesa Ranger District personnel.
- (2) The Tonto National Forest Map and the "Backcountry Ethics" brochure are available to the public. Limited educational information explaining the Forest Service concept of Wilderness, recommended visitor behavior, and backcountry ethics for wilderness is available at National Forest offices.
- (3) A four-color topographic map of the Wilderness has been produced. The map shows all the system trails and trailheads, as well as giving general information about the Wilderness and backcountry ethics.
- (4) The Superstition Wilderness ROG is the only Forest Service publication specifically addressing this Wilderness. It is available at the Forest Supervisor's Office and District Offices.
- (5) Information about the biotic and abiotic characteristics of the Superstition Wilderness is available from a very limited number of sources including publications, college texts, and popular books which discuss the plants, animals, and geology of the general region, as well as its history.
- (6) Many visitors lack knowledge of methods to minimize their impact on Wilderness resources, with violations occurring through acts of ignorance.
- (7) Some requests by public groups for presentations on Wilderness management have not been met due to lack of personnel.
- (8) Publications about the Lost Dutchman and Peralta mine legends encourage visitation to the Wilderness but seldom mention land management designations (i.e. Wilderness), ethics, etc. Also, guide books and articles often fail to include ethics information.
- (9) A ROG for all-terrain bicycle trails on the Forest is available. This is useful to suggest non-Wilderness alternatives to the public.

### **b. Assumptions**

- (1) Continuation of the information and education program will be needed to ensure that visitors understand the Wilderness, including its opportunities and limitations.
- (2) Visitor contacts at trailheads and inside the Wilderness will become increasingly important. Positive contacts are necessary to ensure that both the resource and the wilderness experience are enhanced.

- (3) There are various types of Wilderness users, and informing and educating these groups requires a variety of techniques. To receive the cooperation and voluntary assistance of these groups, education and interaction must be on a reciprocal basis.
- (4) The need to maintain an active education program in public schools, universities, local service clubs, and organizations is becoming increasingly important. This need transcends the Superstition Wilderness and is necessary Forest-wide.
- (5) Wilderness Management and other Forest personnel lack knowledge in many aspects of environmental education.

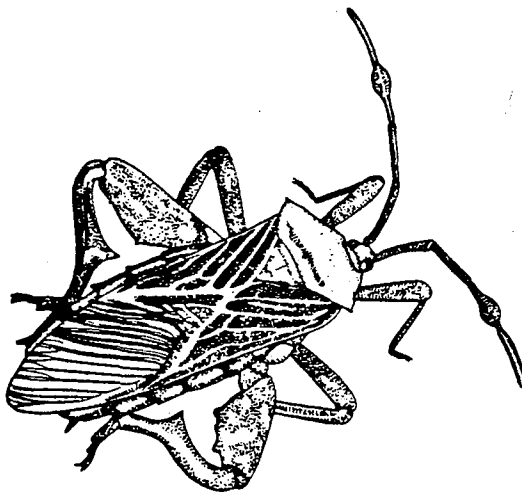
#### ***c. Implementation Policy***

- (1) As "Good Hosts", Wilderness Rangers, receptionists, and other Forest Service personnel who contact the public about the Superstition Wilderness will be well acquainted with Wilderness philosophies, management goals, history of the area, "no-trace camping" ethics, and (to the extent possible) current conditions within the Wilderness.
- (2) Printed materials will contain information on Wilderness Management goals. Publishers and authors of trail, climbing, and informational books will be asked to include minimum-impact messages in publications discussing the Superstition Wilderness. Media contacts will be kept apprised of new management goals and decisions as well as wilderness philosophies pertaining to the Wilderness.
- (3) As it becomes available, data about use of popular trailheads and travel zones will be made available in the ROG, allowing users to plan visits to less crowded areas of the Wilderness, thus creating voluntary dispersal. Attempts at user dispersal inside the Wilderness must be very selective, considering potential adverse impacts to currently undisturbed areas.
- (4) Information and education programs will promote an understanding with the public concerning philosophy and management of the Superstition Wilderness.
- (5) Wilderness personnel will be selected and trained to ensure that positive visitor contacts are made in the field.

#### ***d. Implementation Actions***

- (1) When contacted (either in town or in the field), all Wilderness visitors will be given the "no-trace camping" message. This message will include information about proper methods for human waste disposal, removal of litter, promotion of "dry camps", and other backcountry ethics.
- (2) Wilderness management personnel will continue to develop information and education programs and continue to meet requests for presentations concerning all aspects of Wilderness use and management.
- (3) Special Orders pertaining to this Wilderness will be posted on bulletin boards at Peralta and First Water and carried by Wilderness Rangers.

- (4) The WIS program will be expanded to fall, winter, and spring when feasible.
- (5) The Superstition Wilderness map and ROG will be reviewed and revised periodically to keep them up to date with management decisions and on-the-ground conditions. Corrections will be made at no greater than three-year intervals.
- (6) Attempts will be made to continue, and escalate the involvement of schools, service organizations, etc., in ongoing volunteer projects and partnerships.
- (7) Receptionists and other employees will be trained in wilderness philosophies and minimum impact techniques as part of District orientation. Field trips for orientation will include visits to the Wilderness. Field personnel will provide current feedback to District and Supervisor's Office receptionists to ensure they are kept up to date.
- (8) Wilderness personnel and publications will provide visitors with information concerning the protection of water sources in the area and treatment of drinking water.
- (9) Visitors unfamiliar with wilderness concepts will be informed that they are personally responsible for assessing conditions and must rely on their own ability to cope with them. They should be made aware that wilderness travel involves a degree of risk, and that they assume this risk if they elect to visit this area.
- (10) Non-Wilderness recreation opportunities will be made known to those not specifically seeking a wilderness-dependant recreation experience.
- (11) Attempts will be made to develop additional information on the cultural and natural history of the area, as distinguished from the legends and stories about the area; however, this information will not be used to advertise the Wilderness.
- (12) Assist in the development of a ROG for alternative, non-Wilderness areas to disperse use that is not Wilderness-oriented.
- (13) Develop audio/visual materials to augment the WIS program.
- (14) A bibliography of publications pertinent to Wilderness philosophies and Tonto National Forest Wilderness Areas will be compiled, and made available to the public and Forest Service personnel by request.



## **B. MANAGEMENT OF RANGE**

**Implementation Objectives:** To provide for livestock grazing as authorized by law, while minimizing its impact on the Wilderness resource and visitors to it, through practical, reasonable, and uniform application of established guidelines and policy. (See FSM 2323.2 and FSH 2309.19, chapter 22.)

### **1. Current Situation**

- a. The presence of domestic livestock in Wilderness and the structural facilities necessary for their management is authorized by law.
- b. At present there are eleven grazing allotments that include varying amounts of the Superstition Wilderness. None are totally within the Wilderness. See Appendix H for a listing of these allotments and stocking rates as of January 1992. A map showing allotment boundaries is available from Range Management personnel.
- c. Because grazing allotments may include Wilderness and non-Wilderness lands, livestock capacity (AUM) within the Wilderness cannot be identified. On eight cattle allotments, year-long use is permitted. The breeding herd remains on the range yearlong with their calves being removed by May 31 of the year following their birth. Two allotments have only winter seasonal use by yearlings. All active allotments have approved Allotment Management Plans (AMPs).
- d. Livestock were removed from the Superstition allotment (which covers a large part of the western Superstition Wilderness) in 1982, and it no longer has a grazing obligation.
- e. Use by visitor pack and saddle livestock has increased during the past few years. This has created a demand on the forage resource at concentration areas and near permanent waters. The Reavis Ranch is an especially critical area. Also, recreational livestock users occasionally make use of range facilities.
- f. There are many structural facilities for managing and handling livestock that have been constructed within the Wilderness throughout the years. A significant number of developments have been determined non-essential and have been removed; more developments may be removed in the future. The only existing range facility that is a building is the Reavis tin shed (note: the Reavis Ranch house is an administrative facility).
- g. Some allotment maps are out of date, and do not accurately show all range facilities.
- h. In 1979, a committee in the United States House of Representatives developed a Conference Report entitled "Grazing in National Forest Wilderness Areas" (H.R. Report 96-617). The guidelines in this report have been adopted by the Forest Service nationwide, and can be found in FSM 2323.22.

### **2. Assumptions**

- a. Wilderness Management personnel need to become familiar with Range Management policies and practices in order to improve their management skills.

- b. Range Management personnel need to become familiar with the special problems Wilderness managers encounter in the administration of the non-conforming uses of Wilderness resources.
- c. The public often finds the outgrowths of livestock use (e.g. fences, flies, fouled water holes, and manure) more objectionable than actual damage to the range resource.
- d. Livestock owners will desire that livestock use of the Wilderness (with structural range facilities) continue at the present levels, (or increase), while segments of the public will demand its exclusion or reduction.
- e. Despite restrictions, there will be increasing demands for forage and water use by recreational pack and saddle stock.
- f. Grazing animals will have an impact upon the natural ecological succession of vegetation within some critical portions of this Wilderness. Range condition is the single most important issue directly related to the quality of the wildlife habitat.
- g. Requests for permittee use of motorized equipment and vehicles will continue, including a wide variety of equipment ranging from bulldozers to helicopters. This presence will encourage similar requests by the public, other government agencies, and by the Forest Service itself.

### **3. Implementation Policy**

- a. The Tonto LRMP specifies Management Level B for this Wilderness. This means "improvements are *minimal*" and "livestock use is within the present grazing capacity". Management will be based on individual AMPs prepared in coordination with this Implementation Plan. AMPs will be based on an evaluation of management alternatives through the NEPA process. Within Level B, priority will be given to maintenance of natural ecological successions and to the recovery of riparian areas.
- b. Stocking rates for the portions of allotments within the Wilderness will make adequate allowances for reserve forage for wildlife and recreationists' livestock based on production-utilization studies and consistency with Wilderness values.
- c. When justified and as the opportunity presents itself, selected areas within individual allotments will be put into non-use status.
- d. As per the Tonto LRMP, where allotments consist of both Wilderness and non-Wilderness areas, the level of range resource management outside the Wilderness will be raised to Level C or D (as appropriate) so that grazing pressure in areas of Level B management can be minimized.
- e. Permittees' requests for the use of motorized equipment will be thoroughly analyzed to ensure they meet the "rule of practical necessity and reasonableness", plus other guidelines and constraints contained in the Congressional Grazing Guidelines, H.R. 96-617. Requests for such use will not be routinely recommended for approval without this analysis.

- f. For Range projects carried out by Forest Service personnel and/or financed by the Federal Government, the same standards, evaluation criteria, and level of approval apply as in any other Forest Service project (see FSM 2326). Regional Forester's approval is required for the use of motor vehicles, motorized equipment, and mechanical transport for the maintenance of range facilities.
- g. Structural range facilities that are not *essential* for minimizing the impact of grazing on the Wilderness resource will be removed. Facilities which have been abandoned and unneeded for a period of three years will be removed (except for allotments in a non-use or vacant status). Close liaison with the involved permittee will be maintained.
- h. Structural range developments will be made as unobtrusive as possible. See "National Forest Landscape Management: Range" for guidance concerning range structures. This includes:
  - Relocating away from people-use areas;
  - Use non-reflective wire and posts (unpainted, whenever available, or all green);
  - Where pipelines are *essential*, they will be buried if at all possible.
- i. Native, untreated wood from outside the Wilderness will be used for posts whenever feasible.
- j. Buildings not currently authorized will not be planned or permitted.
- k. Non-structural range improvements and practices will rarely, if ever, be warranted. The need for any such proposal will be analyzed using the criteria found in FSM 2323.26b.
- l. Salt will be located away from waters and areas of public concentration (such as system trails).
- m. See section IV. B., Land Occupancy and Use for information concerning facilities on the Superstition Allotment.
- n. Recently burned areas of significant size or sensitivity will be excluded from livestock grazing until the forage species have recovered to a point where they can withstand grazing without detrimental effects. Temporary fences may be constructed if essential, or the entire grazing unit will be closed to provide the necessary protection.

#### **4. Implementation Actions**

- a. The Superstition Allotment will be considered for official change from Management Level B to Management Level A with an amendment to the LRMP.
- b. Implement and/or update an AMP for each grazing allotment, and prepare annual permittee instructions (annual operating plan).
- c. District Wilderness personnel, with the guidance of Forest and District Range personnel, will familiarize themselves with range management concepts and programs pertinent to the Superstition Wilderness. Range personnel will receive training in Wilderness management and values.

- d. As individual facilities are determined to be unneeded in conjunction with Range Management planning, they will be removed.
- e. Unserviceable range facilities (not including those on the range allotment improvement list) in the Reavis Ranch vicinity (e.g. cattle chute, fences) will be removed as soon as possible.
- f. All range facilities (excluding boundary fences) will be visited by Wilderness personnel as the opportunity presents itself. Photos will be taken, and a photo file compiled.
- g. When new permittees apply for grazing permits on allotments that include Wilderness, they will be made fully aware of Wilderness boundaries, restrictions, and other special items of note that apply to the Superstition Wilderness. This briefing will be documented by letter to the permittee.
- h. In all corral construction and reconstruction, provision will be made for possible use by recreational livestock. Recreational livestock users will be educated about the use of range facilities, including liability for damages.

**C. MANAGEMENT OF WILDLIFE, FISH, AND HABITAT** (All Species not on Federal Threatened and Endangered List)

**Implementation Objective.** In cooperation with the Arizona Game and Fish Department (AG&F), apply the "Policies and Guidelines for Fish and Wildlife Management in National Forest and Bureau of Land Management (BLM) Wilderness" (FSH 2309.19, chapter 23.1) in a practical, reasonable, and uniform manner. Several important concepts contained in this document are:

- Management activities will be guided by the principle of doing only the minimum necessary to manage the area as wilderness;
- Management activities will allow natural processes to control wilderness ecosystems and their wildlife to the greatest extent possible;
- Keep wildlife naturally wild, with behavior and numbers altered as little as possible by human influence and actions;
- Allow viewing and State authorized hunting, fishing and trapping where such activities are (a) biologically sound, (b) legal, and (c) conducted in the spirit of the wilderness experience.

**1. Current Situation**

- a. The Superstition Wilderness, due to its size, topography, and remoteness, provides habitat for a wide variety of wildlife species. Wildlife is an important component of the wilderness resource. The area provides opportunities for the viewing, scientific study, hunting, and trapping of wildlife species.
- b. Actual wildlife management is vested with AG&F, while habitat management is the responsibility of the Forest Service.
- c. Some portions of riparian areas are in a degraded condition, however improvement has occurred in some areas.
- d. The Regional Forester's Sensitive Species List which includes Federal and State-listed Threatened and Endangered (T&E) Species and Forest Service-listed Sensitive Species is found in FSM 2670.
- e. Some State-listed Threatened wildlife species have been found within this Wilderness.
- f. Desert bighorn sheep were historically found in this Wilderness. The last one is believed to have been poached in the 1940's in the Lewis and Pranty drainage. In 1984, thirty sheep were released by AG&F just outside the Wilderness southwest of the JF Headquarters. Most are now located within the Wilderness. In 1987 and 1989, additional animals were reintroduced (via helicopter) on Tortilla Mountain.
- g. Overgrazing in some locations (especially riparian areas) has been detrimental to wildlife habitats. See the Range Analysis and AMPs for specific information.

- h. This Wilderness is located entirely within AG&F Management Unit 24 B.
- i. A few domestic animals are non-indigenous, but their presence pre-dates Wilderness designation for the Superstitions. These are horses, mules, burros, cows, and dogs.
- j. There are no wildlife watering/habitat structures in this Wilderness.

## **2. Assumptions**

- a. Hunting and trapping are established consumptive uses and will continue to be aspects of the wilderness experience to some visitors.
- b. Observing wildlife is an important part of many visitors' wilderness experience.
- c. There will be pressure to intensify wildlife management to satisfy recreational demands. The desirability for special recognition of Wilderness Areas with respect to Wildlife Management Unit(s) or subunit(s) will increase.
- d. The importance of Wilderness as a benchmark measure of native gene pools for wildlife species will increase.
- e. Natural fluctuations in wildlife population levels will occur, however lack of specific data will preclude evaluation until extreme changes have occurred.
- f. Wildlife habitats located in some riparian areas of the Wilderness will continue to degrade without specific management actions designed to address the problem.

## **3. Implementation Policy**

- a. Forest Service and AG&F actions will be predicated on need for protection and maintenance of the Wilderness resource (including wildlife and their respective habitats) in an untrammled condition. All management activities will follow direction as established in FSH 2309.19, chapter 23.1.
- b. See FSM 2670 for Forest Service policy concerning Sensitive Species.
- c. Formal governmental predator control programs will not be conducted within the Wilderness. Animal Damage Control (USDA) personnel will not operate within this Wilderness without specific authorization by the Regional Forester. Recommendations to the AG&F Commission to restrict hunting of predators will not be made so long as predator populations remain "untrammled". (See FSM 2724.11, Tonto Supplement #11 for policy concerning trapper's camps within this Wilderness.)
- d. All trapping, transplanting, and monitoring of indigenous wildlife species and associated activities by AG&F will adhere to Forest Service policy regarding equipment use and transportation (see FSM 2326, FSH 2309.19, and Appendix C).
- e. Aerial surveys may proceed below the Federal Aviation Administration advisory (minimum altitude 2000 feet above surface level) only when shown to be *essential* to protect the Wilderness resource (see section III. G., Management of Air Resources).

- f. Non-indigenous species of birds, mammals, and fish not present prior to this area's designation as Wilderness will not be brought into or introduced into the Wilderness. On-going programs outside the Wilderness may continue so long as there are no adverse impacts to Wilderness resources.
- g. Native species may be re-established (if eliminated by the influence of man) following NEPA analysis and in a manner compatible with the Wilderness environment.
- h. Where appropriate, non-indigenous species now present in the Wilderness will be removed from the Wilderness as the opportunity presents itself.
- i. Forest Wildlife personnel will coordinate wildlife management actions in the Wilderness with District and Forest Wilderness Staff.
- j. Development of wildlife habitat structures will be permitted only when *essential* to preserve the Wilderness resource and to correct unnatural conditions resulting from human influence (FSH 2309.19, chapter 23.1).

#### **4. Implementation Actions**

- a. Visitor actions that tend to alter the natural behavior of wildlife will be discouraged through education (and other management actions, if necessary).
- b. District Wilderness personnel, with the guidance of Forest and District Wildlife personnel, will familiarize themselves with wildlife management concepts and programs pertinent to the Superstition Wilderness. Wildlife personnel will receive training in Wilderness management and values.
- c. Wilderness personnel will coordinate activities with Forest Wildlife staff when habitat studies are being conducted in the Wilderness.
- d. Wildlife Staff, with input from Wilderness managers, will provide information and recommendations to the AG&F Region VI Supervisor early each year regarding Hunting regulations. This will coincide with AG&F Commission planning meetings.
- e. Assistance from the AG&F will be sought to assure coordination in administration of hunting outfitter/guide permits. Lists of all Forest Service-authorized guides will be furnished on a regular basis.
- f. Mesa District will arrange to be notified by AG&F two weeks prior to any wildlife surveys.
- g. Forest Service personnel will continue to cooperate with AG&F in law enforcement within the Wilderness.
- h. Forest personnel will continue to work with AG&F personnel with the objective of establishing Wildlife Management Units or sub-units which correspond to this (and other) Wilderness Areas, thereby allowing specific Wilderness wildlife management.

## **D. THREATENED AND ENDANGERED PLANTS AND ANIMALS (Federally-listed)**

**Implementation Objectives:** To re-establish Federally-listed T&E species known to have inhabited the Superstition Wilderness; and to maintain viable populations of those species still found there. (See FSH 2309.19, chapter 23.1)

### **1. Current Situation**

- a. The Fish and Wildlife Service (US Department of the Interior) has the primary legal mandate for protection and recovery programs of Federally-listed T&E wildlife species on Federal lands. AG&F is responsible for management of all wildlife, including State and Federally-listed species, while the Forest Service has the responsibility for managing the land and habitat upon which these species are dependent.
- b. A systematic inventory of all potential T&E habitat has not been completed for all species. Surveys are being conducted as funding allows.
- c. The Gila Topminnow was reintroduced within this Wilderness at Charlebois Spring in 1981.
- d. Grizzly bears, mexican wolves, and jaguars are major components of the ecosystem that have been extirpated from the entire state of Arizona.
- e. A list of Federal T&E species can be found as part of the Regional Forester's Sensitive Species List (FSM 2670).

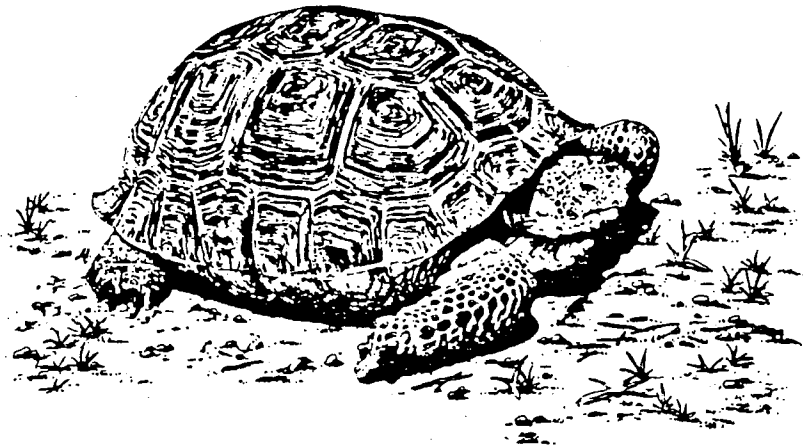
### **2. Assumptions**

- a. Due to the presence of required habitat and ecological parameters, it is assumed T&E plant species can be found within this area.
- b. Wilderness will become more important in the decades ahead as a sanctuary and habitat for T&E species.
- c. Animal species will be periodically added to and deleted from the T&E species list.
- d. Reintroduction of large predators in the Superstition Wilderness is controversial among various special-interest groups.
- e. Special requirements of T&E species will affect and could limit management options for other resources.

### **3. Implementation Policy and Actions**

- a. All management proposals will conform to Wilderness laws and regulations, and to "Policies and Guidelines for Fish and Wildlife Management in National Forest and BLM Wilderness" (FSH 2309.19, chapter 23.1). All involved agencies will be made aware of the special status of the land involved. No actions will be taken without full involvement of Wilderness Management personnel.
- b. A continuing effort will be directed towards inventory of T&E habitat and populations.

- c. Preservation and/or recovery of T&E species will be an integral part of over-all Wilderness management.
- d. Requests, which meet the criteria outlined in Appendix C, for the use of mechanized transport and/or motorized equipment will be submitted for approval to the Regional Forester on a case-by-case basis.
- e. Management activities and programs will receive biological evaluations for possible effects on T&E and sensitive species (FSM 2672.4, Tonto Supplement #2).



## E. MANAGEMENT OF WATER RESOURCES

**Implementation Objective:** To preserve water bodies and stream courses in a natural wilderness state without modification or human caused contamination. (See FSM 2323.4.)

### 1. Current Situation

- a. The waters within the Superstition Wilderness are protected according to "Water Quality Standards for Waters of the State", which is administered by the Arizona Department of Environmental Quality (ADEQ).
- b. There are three major watersheds within the Wilderness. The largest is the Lower Salt River Watershed #179 which covers 60 percent of the Wilderness. The Pinto-Campaign #169 is next with 25 percent, then the Queen Creek #148 with 15 percent.
- c. Although runoff is limited, it is of importance to the State of Arizona and the Phoenix metropolitan area. Runoff from much of the Wilderness flows into reservoirs on the Salt River. The Phoenix Active Management Area to the west has been so designated because the recharge to that area has been insufficient to match withdrawals.
- d. The annual precipitation ranges from less than 12 inches in the lower elevations to 24 inches in the high country. Relatively light snowfall occurs during the winter months. Flash floods may occur after severe thunderstorms.
- e. A Forest-wide water-quality monitoring program is conducted by the Forest Water, Soil, and Air Staff on an as-needed basis at critical sites. Water quality studies were conducted in 1983 at six water sources: Second Water Spring, Charlebois Spring, LaBarge Spring, Bluff Spring, Whiskey Spring, and Reavis Creek. Results of the inorganic analyses concluded that inorganic ions at all sources were within drinking water standards. The general results of the bacteria analyses showed low fecal coliform levels and high fecal streptococcus levels. See the Forest Water, Soil, and Air Staff for additional information. *Sampled 1994: at charlebois Spr.*
- f. Because of the high fecal streptococcus counts, the water quality study recommended that use of these sources for drinking water should not be encouraged. The study also indicated that these backcountry water sources require sterilization for safe drinking.
- g. The Forest Service has filed for State water rights for all known stock tanks and developed springs. *containing water in such a place*
- h. State law prohibits camping "within 1/4 mile of a natural water hole or a man-made watering facility ~~if camping there means that wildlife or domestic stock will be denied access to the only reasonably available water~~". *containing water* 17-308
- i. There is interest in cloud seeding to artificially increase mountain precipitation.

## **2. Assumptions**

- a. The scarcity of water will continue to concentrate visitor use at water sources. Restrictions on camping near springs and streams may need to be implemented and enforced to protect water quality.
- b. As numbers of visitors and recreational livestock increase, problems with bacterial contamination, sedimentation, and alteration of nutrient supplies for aquatic ecosystems will also increase.
- c. Impacts on water quality from cattle will be primarily in the form of riparian area degradation, bank trampling, erosion, increased organic matter available to water supply, and bacterial contamination. Watershed and riparian conditions may improve as grazing allotments are brought under management.
- d. Major impacts from man will be related to detergents, human waste disposal, and escaped fires.

## **3. Implementation Policy**

- a. The standards and policies established by ADEQ will be adhered to and are considered LAC standards for this Wilderness.
- b. Watersheds will not be specifically altered or managed to provide increased water quantity, unnatural water quality, or to change the timing and duration of runoff without Chief's approval.
- c. Cloud seeding that effects the Superstition Wilderness will not be allowed.
- d. No streamcourse diversions will be permitted.
- e. Any use that unacceptably alters a healthy aquatic ecosystem will be reduced and managed to an acceptable level.
- f. All Wilderness management activities will provide for watershed protection and maintenance of natural water quality.
- g. When feasible, the sources of springs will be made inaccessible to livestock. Rustic natural material will be used if at all possible.

## **4. Implementation Actions**

- a. The Wilderness Staff-Assistant will request testing of a water source in the Wilderness when there is a high potential for contamination. Transportation of needed equipment will be by primitive means.
- b. Determination of recreational, livestock, and other impacts on water quality will be made by evaluating water quality periodically at the same site, and by comparing similar water sources that receive different levels of recreation use.

- c. Contamination of springs or streams by recreation stock and human wastes, as well as detergents and other cleaning materials, will be minimized by education and enforcement. Wilderness publications and personnel will provide visitors with information concerning the protection of water sources in the area.
- d. The area surrounding Charlebois Spring will be fenced so as to exclude livestock, with a walk-through gate installed on the trail. A rustic water trough will be put into service in a less sensitive area.
- e. The source of any contaminated water will be sought out and immediate action taken to correct the problem and/or the public will be warned not to use the water in question.
- f. State law regarding camping near water sources will be brought to visitor's attention, and incorporated into environmental education programs.

3C (road seeding)  
may not be wanted  
to comply w/ FS 2820  
policy

## **F. MANAGEMENT OF FOREST COVER**

**Implementation Objective:** To manage the forest and vegetative cover for retention of their primeval character and aesthetic qualities; to allow natural ecological processes to operate freely. (See FSM 2323.5.)

### **1. Current Situation**

- a. There is a shortage of accessible dead and down wood for campfires at popular campsites. This situation has led to the cutting and stripping of live trees and shrubs in these areas.
- b. Portions of the riparian community in the Superstition Wilderness are in a degraded condition, however, improvement has been made in other areas, specifically in the western and central parts of the Wilderness.
- c. Grazing of cattle in a sensitive riparian area along Reavis Creek north of the old ranch house was disallowed in 1986, and its boundary fence was reconstructed in 1990.
- d. Forest Special Order 12-59-R prohibits possessing or transporting any part of a native plant, except dead and down material (see Appendix A).
- e. There are certain non-indigenous plant species which were established in the Wilderness prior to designation of the Wilderness.

### **2. Assumptions**

- a. Fire, livestock grazing, camping, and packstock activities will continue to be the major impacts on the forest and vegetative cover.
- b. Campfire wood cutting and gathering will be a severe problem adjacent to most of the popular campsites.
- c. Riparian areas may degrade without specific management programs designed to sustain and enhance their current conditions.

### **3. Implementation Policy and Actions**

- a. Whenever possible, a natural healing process will be allowed in disturbed vegetative communities.
- b. Live trees and/or standing snags will not be cut for water bars or sign posts. Wood incidentally cut during trail clearing or fence projects may be utilized.
- c. The Reavis Creek Riparian Area will be maintained as an area excluded from all grazing by maintenance/reconstruction of the existing fence, including removal of gates and, if necessary, installation of fence stiles (walk-through or ladder type).
- d. Wilderness Management personnel will work with the Forest Riparian Specialist in developing a riparian management and monitoring program for the Wilderness.

- e. All trees and shrubs cut for administrative use or by grazing permittees will be away from any campsite or system trail. Evidence of all cutting will be thoroughly disguised.
- f. Non-indigenous plant species not present prior to this area's designation as Wilderness will not be brought into or introduced into the Wilderness. Ongoing programs outside the Wilderness may continue so long as there are no adverse impacts to the Wilderness resource.
- g. Non-indigenous species now present in the Wilderness will be extirpated as the opportunity presents itself.



## **G. MANAGEMENT OF AIR RESOURCES**

### **Implementation Objectives:**

- To comply with the Clean Air Act as amended, and to ensure that the air quality related values are not adversely impacted within the Superstition Wilderness which is a Class I Area (see FSM 2120 and 2323.6);
- to minimize the intrusion of aircraft below 2,000 feet above surface level (see FSM 2326.03).

### **1. Current Situation**

- a. This Wilderness (including the contiguous areas added in 1984) is defined by the Clean Air Act as a Class I area. It is protected under provisions of the State Implementation Plan, which is administered by the ADEQ to insure prevention of significant deterioration (PSD) of air quality.
- b. Casual observations indicate nearly daily intrusions of the Phoenix urban air pollution plume into this Class I area.
- c. Beginning in 1985, air visibility data has been monitored sporadically with a time-lapse camera. Air pollution sensitive lichens were studied in 1990. A "Wilderness Area History Report" (concerning air quality) is available at the Forest Supervisor's Office.
- d. Air quality related values (AQRV), sensitive receptors, and LAC indicators and standards for this Wilderness were developed during an Air Quality Related Values Workshop in January, 1991. An Air Quality Related Values draft monitoring plan has been completed. The draft plan is on file with the Watershed and Airshed Staff in the Forest Supervisor's Office.
- e. The Forest Service is creating an Air Resource Management Handbook (FSH 2509.19).
- f. The State must develop an Air Quality Implementation Plan and Interim Operations Guidance for Smoke Management to protect visibility statewide. Fire Management is bound by the standards in the State plans (see section IV. A., Fire, Smoke, Forest Disease, and Insect Activity).
- g. The Federal Aviation Administration (FAA) advises all aircraft flights maintain a minimum altitude of 2,000 feet above the surface of Wilderness and Primitive Areas and other Noise-Sensitive Areas. The surface is defined as: the highest terrain within 2,000 feet laterally of the route of the flight, or the upper-most rim of a canyon or valley.
- h. The FAA advisory is violated frequently by private fixed-wing aircraft, and repeatedly by helicopters (with landings) and military jets. Presently there are ~~three~~<sup>two</sup> military training routes (MTR) which cross this Wilderness: IR-274 (Williams AFB), VR-244 and VR-246 (Luke AFB). (See section IV. B, Land Occupancy and Use, for information related to actual landing of aircraft.)

## **2. Assumptions**

- a. There could be a long-term decrease in smelter emissions as they attain National ambient air quality standards. Decreases in smelter emissions will be more than offset by air pollution increases caused by growth of population-related emission sources coupled with increased overall industrial development.
- b. Since naturally ignited fires are a component of wilderness, the smoke from such natural fires is also a natural component.
- c. Overflights by helicopters and private airplanes will continue as a significant adverse impact. Military jets will continue as a significant impact until the military training routes (MTR) are relocated.
- d. Any new airport near this Wilderness will have a significant impact on it.

## **3. Implementation Policy**

- a. The Forest Service Air Quality Related Values (AQRV) Monitoring Plan will have details for the air quality management program. The plan must include external smoke impact limits established through the NEPA process. Federal air quality management in Class I areas is subject to review by ADEQ.
- b. LAC indicators and standards as established in the Arizona Wilderness Air Quality Related Values Workshop Report will be adhered to.
- c. Wilderness management will be consistent with the Air Resource Management Handbook, FSH 2509.19.
- d. The Clean Air Act requires that the Federal Land Manager evaluate the potential impact of a proposed facility on air quality related values (AQRV) of this area. Any proposed major stationary source (or major modification to an existing major stationary source) must have a prevention of significant deterioration (PSD) permit before construction may begin. If such a project could affect this Wilderness, the State should notify the Forest Service. If the Forest Service determines that a proposed major stationary source could adversely affect any air quality related values, a request should be made to the ADEQ to modify or deny issuance of the prevention of significant deterioration permit.
- e. Minimize, to the best of our ability, the number of out-service aircraft over-flights below 2000 feet above surface level. In-service flights will only be authorized when shown to be *essential*.

## **4. Implementation Actions**

- a. Meet with responsible State agency representatives periodically to discuss mutual concerns. Assure there is an open line of communication so that we may be notified promptly of any proposed Prevention of Significant Deterioration (PSD) permit.
- b. Review major emitting stationary source applications to determine effects on air quality, and submit findings to the appropriate State agencies.

- c. Continue the visibility monitoring program.
- d. Continue to educate and attempt to gain voluntary compliance with the FAA advisory. Promptly contact any pilot identified as violating this advisory.
- e. Continue to work with Luke ~~and Williams~~-AFBs to find alternative military training routes (MTR). Establishment of new or expansion of existing military training routes will be objected to.
- f. The Forest Service will be involved in the planning process for proposed airports, with the objective of minimizing increased aircraft over-flights and noise impacting the Wilderness.

## H. MANAGEMENT OF MINERAL RESOURCES

**Implementation Objective:** To recognize the rights of claimants specified by the General Mining Laws (as amended) and in the Wilderness Act, while ensuring that their activities create the least possible impact upon the Wilderness resource. (See FSM 2323.7 and 2817.26.)

### 1. Current Situation

- a. The areas of the Superstition Wilderness designated by the Wilderness Act of 1964 were withdrawn from new mineral entry on December 31, 1983. All of its additions were withdrawn with passage of the Arizona Wilderness Act on August 28, 1984.
- b. Mineral potential has been evaluated in U.S. Geological Survey Professional Paper 1300: Wilderness Mineral Potential, 1984. The Bureau of Mines Report MLA 136-82 dated 1982 is also available for review.
- c. Prospecting and exploration have occurred to some extent for many years. Old prospect holes, mine shafts, and access roads mar the landscape in some areas, thus reducing Wilderness values.
- d. As of August 1992, there are approximately 120 claims within the Wilderness. In compliance with Federal law, each claimant must have properly posted and recorded the mining claim(s) and must have made a discovery of a valuable mineral deposit before the date of mineral withdrawal. 32 as of 1997
- e. Approximately fifteen validity examinations have been initiated since 1983. BLM administrative decisions have been made which have invalidated over 20 claims. There are more claims which will require validity examinations.
- f. There has been a great deal of interest in searching for presumed treasure troves within this Wilderness. Such activity is not covered by the mining laws; rather a Special Use Permit is required. See section IV.B., Management of Land Occupancy and Use.
- g. The amount of land rehabilitation needed significantly exceeds the amount of the reclamation bond posted on several claims.
- h. See Appendix J for a copy of a handout (which is available to the public) that defines and summarizes policy for mining, prospecting, and searching for treasure.

### 2. Assumptions

- a. The interest in the "Lost Dutchman Gold Mine" legend will continue, even though the area is closed to mineral entry.
- b. Unacceptable resource damage can be expected by the activities of unauthorized and/or uncontrolled mining claimants and by unauthorized prospectors.
- c. Applications for treasure hunting special use permits will continue as a means of searching for legendary treasures.

### **3. Implementation Policy**

- a. The procedural requirements and intent of Federal Land Policy and Management Act, as well as 36 CFR 228.15 and 293, will be followed in evaluating all requests for mining-related land uses, including prospecting. A written Notice of Intent is required for all operations that could cause any disturbance of surface resources. An Operating Plan (with reclamation bond) will subsequently be required if this disturbance is judged (on a case-by-case basis) to be significant by the Forest Service. (See FSM 2323.74.)
- b. When a Notice of Intent or Operating Plan is submitted for any activity on an existing mining claim, a validity survey will be carried out. No Notice of Intent/Operating Plan will be approved for mining claim development without a determination by a qualified professional that sufficient mineralization exists to warrant such development. If there is not, a validity examination by a federally-certified mineral examiner will immediately be requested. Verification of proper posting of claim boundaries (consistent with the location notice) will be completed as a part of initial survey. (See FSM 2323.75a.)
- c. Those activities generally prohibited within Wilderness, including the use of mechanical transport, aircraft, or motorized equipment, shall be authorized only when shown to be *essential* in accordance with 36 CFR 228.15b.
- d. If a prospector desires to exceed the 14-day stay limit, written authorization (e.g. camp permit, Notice of Intent/Operating Plan) is required whether or not any surface disturbance is involved (see Forest Special Order 12-6-4R).
- e. In all inquiries and activities regarding the Lost Dutchman Mine and other stories, it will be emphasized that this is a legend with little or no basis in fact. Any associated activity which adversely impacts the Wilderness will be discouraged or prohibited as appropriate.

### **4. Implementation Actions**

- a. Wilderness management personnel will receive training in Minerals Area management and will keep informed of the policies and regulations in order to effectively assist in administering mineral-related activities.
- b. Wilderness personnel will monitor all mineral activities, and will ensure that claimants are aware of all related requirements and regulations.
- c. Claims microfiche (or data at the BLM State Office) will be periodically consulted to assure that we are aware of all claims on file and assessment work claimed.
- d. Selected WIS volunteers will be used to monitor mining and reclamation activities during the winter and spring months.
- e. All mining claims will be examined on a priority basis to evaluate the claim's validity. Priority for examination will be based on potential damage to the Wilderness resource, and the likelihood of claim abandonment/relinquishment.
- f. Complete reclamation of surface disturbances on all null and void and invalid claims will be carried out promptly. Recovery of costs for reclamation identified in Operating Plans will be sought from the claim operator. Such attempts for cost recovery, however, will not unreasonably delay site rehabilitation.

## **I. MANAGEMENT OF CULTURAL AND HISTORIC RESOURCES**

**Implementation Objective:** To recognize that cultural and historic resources within to the Superstition Wilderness are a valuable non-renewable resource; and to protect these resources in compliance with Federal law and regulation. (See FSM 2323.8 and 2360.)

### **1. Current Situation**

- a. There has not been a comprehensive survey, inventory, and evaluation of cultural resources within this Wilderness.
- b. The locations of a number of cultural-resource sites are known, but many are not yet inventoried.
- c. There are four "key cultural or historic attractors" within this Wilderness which are frequently visited: the Reavis Ranch site, Angel Basin cliff dwellings, "Circle Stone", and the petroglyphs at Hieroglyphic Spring.
- d. The Reavis Ranch property was acquired by the Forest Service in 1966. Within the property is the Reavis ranch house built in 1936. The house has gradually deteriorated since that time, and burned in November of 1991. This structure has been a popular attraction for Wilderness users.
- e. Vandalism to historic and prehistoric sites continues to occur.

### **2. Assumptions**

- a. The value of historical information will increase with time. There is an increasing need to document historical recollections and photographs while individuals having firsthand knowledge are still available.
- b. Inventory and evaluation of cultural resources within this Wilderness will be continued.
- c. Currently popular sites will continue to attract large numbers of people. Impacts to both cultural and Wilderness resources will increase.

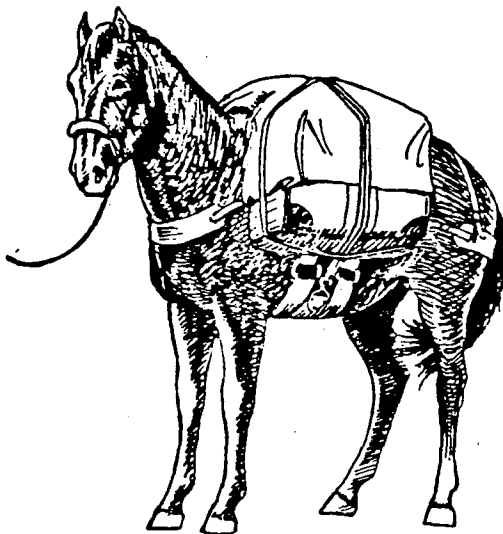
### **3. Implementation Policy**

- a. A project activity which is considered to be an "undertaking" must have archaeological clearance. See FSM 2361.24, R-3 Supplement 2300-91-1 and the Tonto National Forest Cultural Resources Assessment, Management Plan and Overview for a list of projects which are not considered to be undertakings and a list of activities which are undertakings subject to consultation.
- b. No new soil disturbance within the boundaries of a known cultural site is to occur during maintenance activities. If archaeological sites are discovered during the course of any project work, they will be protected, and immediately reported to the Forest Archaeologist.

- c. Appropriate action will be taken to protect all sites from human-caused degradation. The popular "key attractors" will be monitored by Wilderness Rangers on a regular basis. Visitation to them will not be encouraged (e.g., locations will not be put in ROGs or on maps).
- d. The cultural resources within this Wilderness will continue to be effected only by the forces of nature, free from human interference, however maintenance of a historic or prehistoric structure to repair human-caused degradation may be approved by the Regional Forester. Sites or structures nominated to or listed on the National Register of Historic Places may be stabilized to prevent further deterioration as appropriate and when compatible with the preservation of the Wilderness environment.
- e. Stabilization of National Register sites will utilize treatments that are substantially unnoticeable, using all-natural materials which harmonize with the Wilderness environment.
- f. Developments for interpretation of cultural resources will be outside the Wilderness. The use of verbal on-site interpretation by qualified personnel is acceptable. Further interpretation will be limited to general publications that do not specify site locations nor function as "trail guides" to archaeological sites.

#### 4. Implementation Actions

- a. The sign at the Angel Basin cliff dwellings will be maintained so long as it decreases human-caused degradation by increasing people's knowledge of the area's value.
- b. The travelway to Circle Stone will be monitored to ensure that resource damage (e.g., erosion) does not occur. If needed, it will be made a system trail, and appropriately maintained.
- c. The Reavis Ranch house will be inspected periodically, and those parts of the house which could be unsafe will be dismantled and removed from the Wilderness. Debris in the area which is not significant as a cultural resource will also be removed. The remains of the structure will continue to be affected primarily by the forces of nature. *Walls, etc. all removed*
- d. When requested the Forest Archaeological Staff will provide training to those employees and/or outfitter/guides requiring qualification in archaeological interpretation.



## **IV. MANAGEMENT OF SUPPORT ACTIVITIES**

### **A. MANAGEMENT OF FIRE, SMOKE, FOREST DISEASE, AND INSECT ACTIVITY**

**Implementation Objective:** Allow fire, forest diseases, and insects to play their natural ecological role in the Wilderness ecosystem to the maximum extent possible except when such activity will adversely affect resources adjacent to the Superstition Wilderness or human lives within the Wilderness. (See FSM 2324.1 and 2324.2.)

#### **1. Current Situation**

- a. There have been several major human-caused fires in the Wilderness. Lightning fires are numerous, particularly in the western end.
- b. Detection of fires is not generally a problem due to visibility from lookouts, Forest Service patrol flights, and private aircraft.
- c. Outbreaks of fire, disease, and insects in trees and other types of vegetation have the potential of altering the landscape. This is in keeping with the concept of Wilderness; it is the natural result of the ecological process that Wilderness seeks to preserve. The exclusion of fire from the Wilderness ecosystem due to direct and indirect human influence has altered the ecosystem.
- d. The past Forest Service policy of suppressing all fires has led to fuel loading in limited areas of chaparral and in small patches of pine and Arizona cypress. An increased hazard has also resulted from the success of the Love grass seeding in the pine habitat, much of which burned in 1966 and again in 1984.
- e. Smoke management is governed by standards established in the State Air Quality Implementation Plan. Management of smoke from prescribed fires is in accordance with the Interim Operations Guidance for Smoke Management in Arizona under the jurisdiction of ADEQ.
- f. There is a total of 1700 acres of Ponderosa Pine vegetation-type inventoried in the Wilderness. Of this, 550 acres is on slopes of 0-40%, all of which is in Management Area 3B; much of this acreage burned in 1984.

#### **2. Assumptions**

- a. As Wilderness visitation continues to increase, the need for human-caused fire prevention work will also increase.
- b. In areas where unnatural fuel accumulations exist, there will be potential for unnaturally intense and/or large fires (the natural periodicity of desert fires has not yet been determined).
- c. Fire in its natural role is needed to re-establish and maintain an unmanipulated mosaic of ecological and successional vegetative types and wildlife habitats.
- d. Some people will continue to favor suppression of all fires in the Wilderness. There is a need to educate people in the benefits and tradeoffs of a natural wildfire program.

### 3. Implementation Policy

- a. FSM 2326.04c, Tonto Supplement #13 delegates under certain conditions authority to the Tonto Fire Staff Officer (in consultation with the District Ranger and/or the District Fire Management Officer) to approve/disapprove the use of motorized equipment within designated Wilderness Areas. For situations outside given parameters, approval/disapproval is by the Forest Supervisor or Deputy Forest Supervisor. See Appendix C for complete details.
- b. During fire control actions, protection of the Wilderness resource will take top priority. Control activities shall follow "light hand tactics", giving preference to methods and equipment which least alter the landscape or disturb the land surface. Bulldozers, or other heavy equipment which disturb soil, will not be used to control fires unless absolutely necessary and only after approval of the Regional Forester.
- c. Parameters for designation of an unplanned prescribed fire are contained in the LRMP (see pages 75, 96, 99, 173 and 174). Innovative natural-fire management within these parameters may preclude the need for planned ignitions within this planning period.
- d. The LRMP sets a fuel hazard reduction proposal in Period 1 for Management Area 2A (see LRMP page 73). Within this period up to October 1991, 2 acres of this proposed reduction has been achieved by natural ignitions.
- e. If deemed necessary, fuel hazard reduction by planned ignition will be only in pine vegetation type on slopes of 0-40% to return to a natural burn cycle. No further management-ignition fires would be necessary. Full details for accomplishment of proposed fuel hazard reduction by management ignition will be contained in the Fire Management Plan for this Wilderness.
- f. If planned, management-ignited and natural prescribed fires ignited outside the Wilderness may be allowed to burn into the Wilderness if this results in a more natural burn pattern consistent with Wilderness values.
- g. Fire suppression decisions for fires escaping initial attack will reflect consideration for Wilderness values, suppression costs, natural barriers, and the anticipated path of fire spread. This will be done as a part of the Escaped Fire Situation Analysis.
- h. Fire suppression includes such activities as surveillance, confinement, containment, burning to natural barriers, and directional control. Maximum appropriate use will be made of these techniques.
- i. Under ADEQ Guidelines, prescribed natural fires and all wildfires (natural or human-caused) are exempt from smoke management standards, but ADEQ should be notified.
- j. Management-ignited prescribed fires within Wilderness boundaries must have approval of ADEQ and are to be conducted using Best Management Practices for smoke control.

- k. Ground level smoke impact from prescribed fires outside the Wilderness may only impact the Wilderness during periods of low visitor use. The current periods of low visitor use are June through August for the western half of the Wilderness and May through September for the eastern half. An impact occurs when there is prescribed-fire smoke intrusion at ground level.
- l. Whenever possible, a natural recovery will be allowed instead of seeding. If the Burned Area Survey Report calls for re-seeding, only indigenous species will be used. See section III. B., Management of Range for information concerning grazing burned areas.
- m. Project fire camps will be established outside of the Wilderness whenever feasible. Within the Wilderness, camps will be kept as small as possible. All efforts to minimize camp impact will be taken.
- n. Fire demobilization will be by primitive means except when other fire situations prompt retrieval of specialized personnel, and (a) no other practical means of retrieval is available, or (b) personnel would be subjected to unreasonable health and safety hazards if motorized equipment were not utilized.
- o. No permanent helispots will be constructed. Natural openings, rock outcrops, etc., will be utilized.
- p. Forest disease and insect outbreaks will not be controlled except where there is a clear and imminent significant danger to other values outside the Wilderness and then only by approval of the Chief of the Forest Service.

#### **4. Implementation Actions**

- a. A fire management plan for the Superstition Wilderness will be developed by Fire Management with assistance from Wilderness Management specialists. The Fire Plan carries out the policies of this Implementation Plan and is tiered to it.
- b. The District Ranger or Forest Supervisor will appoint a qualified Resource Advisor for all project fires to see that suppression activities are compatible so far as possible with Wilderness objectives.
- c. Restoration of all firelines will begin immediately after control is established. Acceptable erosion control methods may include building water bars, brush and other debris laid in the firelines, etc.
- d. Along all system trails, particular care will be taken to obliterate all human signs of fire suppression. Where fire lines cross trails, they will be fully naturalized so that the original trail will remain unmistakable.
- e. A thorough cleanup of all trash, etc., resulting from fire suppression activities will be carried out before the last crews are released.
- f. At each semi-annual meeting (see section II. A. 4, Administration - Forest Service), Wilderness and Fire managers will review the results of fire suppression activities for consistency with Wilderness and Fire management objectives.

## **B. MANAGEMENT OF LAND OCCUPANCY AND USE**

**Implementation Objective:** To maintain the Superstition Wilderness free from non-Wilderness facilities and activities (except those necessary to protect the Wilderness resource and those permitted by Section 4(d) of the Wilderness Act). See FSM 2324.3.

### **1. Current Situation**

- a. The stories concerning the legend of the Lost Dutchman and the Peralta Mines are known nationally and are exploited by local communities. Since the closure of the Wilderness to filing new mining claims, there has been a major shift in interest to obtaining Treasure Trove Special Use permits. See Appendix J for a copy of a handout that defines and summarizes policy for mining, prospecting, and searching for treasure.
- b. The interest in searching for treasure persists, even though the search has continued for over 100 years, without any finds. Search for treasure (whether under the guise of a mining claim or treasure trove) has resulted in substantial irrevocable damage to the Wilderness. Sometimes this activity involves use of aircraft below the FAA advisory (2,000 feet minimum above surface level). Occasionally outfitter/guides have assisted in a search for treasure.
- c. Processing of Treasure Trove applications has been time consuming due to the inability of applicants to substantiate their claims.
- d. A number of potential motorized vehicle intrusion points are located along the periphery of the Wilderness. Some of these points are not accessible to four-wheel drive vehicles, but other off-highway vehicles such as motorcycles and ATV's have possible access. These points include the Pine Creek and Tule Canyon drainages, Pinyon Mountain Road #83, and Schoolhouse Wash Road in the Tonto Basin District; the Massacre Ground Road #28, Tortilla Road #213, and Reavis Trailhead in the Mesa District; Trails #213 and 276 in the Globe District.
- e. Vehicular intrusions by all-terrain bicycles have been documented throughout the Wilderness.
- f. All Wilderness trailheads and potential invasion points have signs indicating that no mechanized vehicles or bicycles are allowed in the Wilderness.
- g. A ROG for all-terrain biking in the Forest has been developed.
- h. Forest Special Order 12-90 prohibits the use of motor vehicles and/or mechanical transport on certain trails providing access to the Wilderness (see Appendix A).
- i. A number of structural facilities (fences, corrals, spring developments) are found within the Wilderness. See section III. B. (Management of Range) for details on those structures which are authorized as range facilities.
- j. Equipment storage and abandonment of property have occurred frequently. Forest Special Order 12-59-R currently prohibits storing equipment in excess of fourteen days.
- k. The Forest boundary fence, south and west of the Wilderness, is in disrepair. Trespass by livestock has occurred.

## 2. Assumptions

- a. Interest in treasure trove permits will continue. Many of these applications will cover the same areas already thoroughly explored.
- b. Unacceptable resource damage may be caused by unauthorized treasure trove hunters.
- c. Stories and legends of the area will continue to attract media attention, e.g., movie filming, "documentaries", and magazine stores.
- d. Intrusions by vehicles will continue in some parts of the Wilderness.
- e. The number of bicycle riders illegally entering the Wilderness will continue unless educational efforts and law enforcement are carried out.
- f. Trespass problems will continue if the fence along the Forest boundary is not repaired.

## 3. Implementation Policy

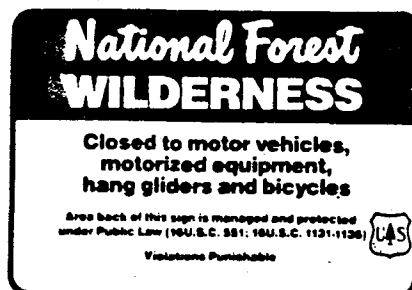
- a. Only those special uses will be authorized which are Wilderness-dependent or which are exceptions in the Wilderness Act. Where authorized, appropriate measures will be required to ensure wilderness values are protected, and/or restoration measures are carried out.
- b. Base camps for commercial activities (e.g. trapper's camps and outfitter's reserved sites) will not be permitted inside this Wilderness.
- c. Any application for treasure trove seeking activities will be evaluated on a case-by-case basis, utilizing the expertise of the Forest Archaeologist and other specialists as needed. Proposals will be submitted only when the evidence of treasure is of such a character that a person of ordinary prudence would be justified in the expenditure of labor and means, with a reasonable prospect of success.
- d. If issued, Treasure Trove permits will be for a specific number of days, based on the evaluation of application. Wilderness personnel will visit and photograph the site regularly.
- e. Prohibit commercial motion picture, video and television filming within the Wilderness, except for documentaries which are consistent with Wilderness management objectives. See FSM 2725.52.
- f. Special use applications must be submitted with sufficient lead time for evaluation for such activities as commercial filming and photography (excluding certain types of still photography and news gathering activities in pursuit of "hot news" which require no permit). See FSM 2725.51.
- g. The Wilderness Act of 1964 prohibits "mechanical transport" in Wilderness Areas. The Forest Service has defined mechanical transport to include "bicycles, hang gliders, wheeled carts, and other items designed to carry people or supplies and powered by either 'nonliving' or 'living' power sources" (36 CFR 293.6a). Congress has affirmed that the Wilderness Act does not prohibit the use of a non-motorized wheelchair in a Wilderness.

"Prudent  
Man"

- h. Storage of equipment, personal property, and/or supplies in excess of three consecutive days will be prohibited.
- i. Facilities will be limited to those *essential* for protection of the Wilderness resource.

#### 4. Implementation Actions

- a. Immediate action will be taken to investigate and resolve unauthorized motorized and mechanical transportation activities within the Wilderness. Warnings or citations will be issued to all people found using or possessing unauthorized motorized equipment or mechanical transportation in the Wilderness.
- b. All potential invasion points will be barred and posted. These points will be monitored periodically. Signs and barriers will be repaired or replaced as necessary (see section III. 4., Signing).
- c. Those trail segments closed to motor vehicles and/or mechanical transportation in Forest Special Order 12-90 will be posted. Forest personnel will inform visitors about this regulation.
- d. Bicyclists encountered at trailheads will be advised about the prohibition of bicycles and the many non-Wilderness options available elsewhere in the Forest (it is important that these are positive contacts).
- e. The All-terrain Bicycle ROG will be used as a tool to provide the public with non-Wilderness alternatives for this activity.
- f. Fences and corrals within the Wilderness in the Superstition Grazing Allotment will be removed. Water developments will be evaluated on a case-by-case basis and may remain only for protection of the Wilderness resource.
- g. Revise Forest Order 12-59-R to prohibit storing property in excess of three consecutive days.
- h. The Forest boundary fence which effects the south and west Wilderness boundary will be reconstructed and maintained.



### **C. SCIENTIFIC STUDY**

**Implementation Objective:** To provide appropriate opportunity for scientific studies that are dependent on a Wilderness environment. (See FSM 2324.4.)

#### **1. Current Situation**

The Superstition Wilderness provides a wide variety of opportunities for scientific study and observation in a natural setting.

#### **2. Assumptions**

- a. More knowledge of man's effects on wilderness-dependant plants, animals, and resources is needed if we are to preserve these species as a component of this Wilderness.
- b. Basic social and natural resource information is crucial to intelligent management decisions, and the development of such information pertinent to Wilderness should be encouraged.
- c. Answers to administrative problems may be obtained through systematic study and research.

#### **3. Implementation Policy**

- a. Only those applications for research that are compatible with the goals and objectives of this plan will be approved. Research activities that adversely affect the Wilderness resource, the experience of users, or conflict with other Wilderness objectives will not be approved.
- b. Research that will help resolve Wilderness management problems will be given encouragement and cooperative aid as administrative time and funding permit. Where possible, such research will be carried on outside the Wilderness itself.
- c. Data collected for management purposes, such as use figures and ecological data, will be made available to scientists for research purposes.
- d. Wilderness managers will require a detailed Research Proposal for proposed research activities occurring within the Wilderness. The proposal will include research design, field methodology, and time schedules.

#### **4. Implementation Actions**

- a. Research and studies from other Forests and Research Stations pertinent to management problems in the Superstition Wilderness will be sought.
- b. Copies of research reports from any study conducted in this Wilderness will be requested and incorporated in the Wilderness Management Information File.
- c. Monitor field research activities to ensure consistency with the research proposal and compatibility with Wilderness objectives.

## V. RESOURCE INVENTORY AND MONITORING

**Implementation Objective:** To develop a comprehensive resource inventory and monitoring program that will enable wilderness managers to identify current impacts and future threats to the natural processes operating in the Superstition Wilderness.

### A. Current Situation

1. Inventory and evaluation has been completed for most of the backcountry camps in the high-use areas of the Superstition Wilderness using Tonto Form FS-R3-12-2300-1.
2. Aerial photos (both color as well as black and white) cover the entire Wilderness. Permanent range clusters have been established in various locations throughout the Wilderness. The permanent photo points established as a part of range analysis work will provide valuable information as they are periodically re-photographed.
3. A riparian area survey is being conducted on the Tonto Forest.

### B. Assumptions

1. More effective and efficient management of the Wilderness can occur as a result of comprehensive resource inventory and monitoring programs.
2. More advanced Wilderness inventory and monitoring techniques will evolve as researchers and managers look closer at this aspect of Wilderness management.

### C. Implementation Policy

1. The LAC concept will be used to assess acceptable social and resource conditions, establish a program to monitor conditions, and evaluate management effectiveness.
2. The LAC indicators, standards, and sampling techniques for the Superstition Wilderness are shown in Appendix E. For LAC standards specific to backcountry camps see Appendix F. Expansion, revision, and improvement of all LAC components will be an ongoing process as program results are evaluated and more is learned about the concept.
3. The Tonto Forest Backcountry Camp Inventory and Impact Evaluation forms (FS-R3-12-2300-1) will continue to be the basis for any backcountry camp monitoring efforts.
4. Inventory of backcountry camps will be on a priority basis. All camps will be inventoried initially and new camps will be added to the survey over time. All camps will be reinventoried periodically or some camps may be identified as key indicator sites for monitoring by sampling. Subsequent inventories will occur at least every five years; this time schedule will be shortened for those key indicator sites which are severely impacted.

5. Wilderness Management personnel will work with other Forest resource specialists to learn about their monitoring techniques, and how they relate to the Wilderness resource.
6. Establishment and monitoring of photo points will show potential or ongoing deviations from the VQO of "preservation", which allows only natural ecological changes to the landscape. These photo points will include views of areas directly or indirectly effected by the actions of humans and domestic animals.

#### ***D. Implementation Actions***

1. All Wilderness LAC indicators will be monitored on a continuing basis.
2. Appropriate LAC indicators will be monitored every day Wilderness personnel are in the Wilderness. A systematic method to record observations will be utilized.
3. Wilderness management personnel will inventory all backcountry camps as per policy item 4.
4. As LAC standards for any given indicator are approached or exceeded, corrective prescriptions will be developed to reduce or stop the changes that are occurring.
5. As per policy item 6., a minimum of ten permanent VQO photo points will be selected and marked by each Wilderness Ranger. Views from these photo points will be re-photographed on regular intervals appropriate to the rapidity of changes to the landscape.
6. Wilderness Rangers will be familiar with the permanent range transect photo file and will assist with re-photographing as time allows.
7. Wilderness Management personnel will keep abreast of the latest research in Wilderness monitoring.



# GLOSSARY

**Air Quality Related Value (AQRV):** A feature or property of an area that is affected in some way by air pollution. Identified values are visibility, odor, flora, fauna, soil, water, geologic feature, and cultural resources.

**Allotment Management Plan (AMP):** A livestock grazing management plan for a specific allotment, based on multiple use resource management objectives. An AMP establishes the seasons of use, the number of livestock to be permitted on the range, and the rangeland developments needed.

**Animal Unit Month (AUM):** The quantity of forage required by one mature cow (1,000 lbs.), or the equivalent, for one month.

**Endangered Species:** Any species which is in danger of extinction throughout all or a significant portion of its range.

**Indigenous:** A plant or animal species is considered to be indigenous (native) to the Wilderness if a population of that specific species occurs or occurred naturally within the involved area.

**Limits of Acceptable Change (LAC):** A planning framework that establishes explicit measures of the acceptable and appropriate resource and social conditions in recreation settings as well as the appropriate management strategies for maintaining and/or achieving those conditions.

**Mechanical Transport:** Includes bicycles, hang gliders, wheeled carts, and other items designed to carry people or supplies and powered by either "nonliving" or "living" power sources.

**Prescribed Fire:** Fire burning under conditions specified in an approved plan.

**Range Allotment:** An area designated for the use of a prescribed number of livestock.

**Riparian:** Situated on or pertaining to the bank of a river, stream, or other body of water. Riparian areas and associated vegetation are often found along intermittent streams in desert regions. Normally used to refer to the habitat of plants and animals along streams or around springs.

**Threatened Species:** Any species likely to become endangered within the foreseeable future throughout all or a significant portion of its range.

**Visitor Use:** Visitor use of the Wilderness resource for inspiration, stimulation, solitude, relaxation, education, pleasure, or satisfaction.

**Visual Quality Objective (VQO):** A desired level of excellence based on physical and sociobiological characteristics of an area. Refers to degree of acceptable alteration of the characteristic landscape. A VQO of "preservation" provides for ecological change only.

**Wilderness:** An uncultivated, uninhabited, and usually roadless area set aside for preservation of natural conditions. According to Section 2(c) of the Wilderness Act of 1964:

A wilderness, in contrast with those areas where man and his own works dominate the landscape, is hereby recognized as an area where earth and its community of life are untrammelled by man, where man himself is a visitor who does not remain. An area of wilderness is further defined to mean in this Act an area of undeveloped Federal land

## GLOSSARY (continued)

retaining its primeval character and influence, without permanent improvements or human habitation, which is protected and managed so as to preserve its natural conditions and which (1) generally appears to have been affected primarily by the forces of nature, with the imprint of man's work substantially unnoticeable; (2) has outstanding opportunities for solitude or a primitive and unconfined type of recreation; (3) has at least five thousand acres of land or is of sufficient size as to make practicable its preservation and use in an unimpaired condition; and (4) may also contain ecological, geological, or other features of scientific, educational, scenic, or historic value.

**Wilderness-Dependant Use:** Those uses that require a substantially unchanged natural environment. Without Wilderness, these uses would be greatly compromised or impossible. Impacts caused by these uses are minor and temporary. Functioning ecosystems and pristine aesthetics are integral aspects of Wilderness-dependant uses.

**Wilderness Opportunity Spectrum (WOS):** A planning approach identifying a range of environments across a spectrum based on environmental, social, and managerial aspects. The WOS designates classes which delineate varying degrees of resource and social conditions for the management of an area.

## APPENDIX A

### FOREST ORDERS PERTAINING TO THE SUPERSTITION WILDERNESS AND ADJACENT AREAS

#### **ORDER 12-6 (as revised) Forest-wide**

Item 1: Forest-wide maximum length of stay is fourteen (14) days in any consecutive thirty (30) day period. This applies to people and property.

#### **ORDER 12-59 (as revised) Superstition Wilderness**

The following acts are prohibited:

1. Storing equipment, property, and/or supplies in excess of fourteen (14) days.
2. Entering or being in the area in a group or more than fifteen (15) people, ~~EXCEPT for two areas (near Peralta and First Water Trailheads) which have a limit of twenty-five (25);~~ see Forest Order map.
3. Disposing (by burying, littering, etc.) of debris, garbage, or other waste.
4. Possessing or transporting any Federal or State-listed "Endangered or Threatened" bird, fish, or animal.
5. Possessing or transporting any part of a native plant, except dead and down material.
6. Shortcutting a switchback on a Forest Development Trail.
7. Grazing any type of livestock, EXCEPT as specifically authorized by permit.
8. Discharging a firearm, EXCEPT for taking game in accordance with State hunting laws.

#### **ORDER 12-75 (as revised) First Water/Dry Camp and Usery Pass Areas**

Restricted to day-use only, except for no more than two-night overnight stay at First Water Trailhead.

## **APPENDIX A (continued)**

### **ORDER 12-90 (as revised) Forest Development Trails**

Using any type vehicle and/or mechanical transport on any trail segment listed. Mechanical transport is defined as: devices such as bicycles, wheeled carts, and other items designed to carry people or supplies and powered by a living power source. Those trails on the list which are adjacent to the Superstition Wilderness are: Siphon Draw Trail #53, Boulder Trail #103, JF Trail #106, Coffee Flat Trail #108, Woodbury Trail #114, Two Bar Ridge Trail #119, Tule Canyon Trail #122, Haunted Canyon Trail #203, Pinto Peak Trail #213, Cuff Button Trail #276.

## **APPENDIX B**

### **APPROVED FUNCTIONAL PLANS WHICH INVOLVE ALL OR PART OF THE SUPERSTITION WILDERNESS**

1. Range Allotment Management Plans
2. Resource Access / Travel Management Plan (RA/TM)
3. District Sign Plan
4. RIM/TRAILS
5. Air Quality Related Values Monitoring Plan (Draft)
6. Outfitter/Guide Operating Plans
7. Fire Management Plan (to be prepared)
8. Tonto Forest Wildlife, Fish, and Threatened and Endangered Species Five-year Program (Draft)
9. Gila Topminnow Recovery Plan
10. Arizona Hedgehog Cactus Conservation Strategy (Draft)
11. Desert Tortoise Conservation Strategy (Draft)

## APPENDIX C

### RESPONSIBILITIES FOR AUTHORIZING USE OF MOTORIZED EQUIPMENT AND/OR MECHANICAL TRANSPORT BY FOREST SERVICE PERSONNEL, FOR FOREST SERVICE FINANCED PROJECTS, BY OUT-SERVICE INDIVIDUALS, OR BY OTHER GOVERNMENT AGENCIES WITHIN A DESIGNATED WILDERNESS

#### 1. CHIEF

Responsible for approval of any use which does not fall into one of the following categories.

#### 2. REGIONAL FORESTER

Responsible for approval in the following situations:

- A. Transport and supply by aircraft, air drop, motor boat, or mechanical transport for situations that meet the following conditions:
  1. Aircraft or motor boat use established before the area was designated as Wilderness by the Act of 1964 or subsequent Wilderness legislation.
  2. Access to surround State and private lands and valid occupancies (FSM 2326.13).
  3. To meet minimum needs for protection and administration of the area as Wilderness, only as follows:
    - a. A delivery or application problem necessary to meet Wilderness objectives cannot be resolved within reason through the use of non-motorized methods;
    - b. An essential activity is impossible to accomplish by non-motorized means because of such factors as time or season limitations, safety, or other material restrictions;
    - c. A necessary and continuing program was established around the use of motorized equipment before the unit became a part of the National Wilderness Preservation System, and the continued use of motorized equipment is essential to continuation of the program;
    - d. Removal of aircraft wreckage when non-motorized methods are unsuitable.
- B. Hand-portable motorized equipment for needs that meet conditions listed under item A.3. above.
- C. Motorized ground equipment not designed for personnel transport and of a type or size that is controlled from a position afoot.
- D. Use of motor vehicles, motorized equipment, and mechanical transport for situations involving established livestock grazing operations (FSM 2204 and 2323.2) and transport of wildlife or fish when non-motorized means are not feasible (FSM 2323.3).

## APPENDIX C (Continued)

- E. Use of motorized equipment specifically allowed by individual Wilderness acts subsequent to the Wilderness Act.

### 3. **FOREST SUPERVISOR**

Responsible for approval in the following situations:

- A. Emergencies where the situation involves an inescapable urgency and temporary need for speed beyond that available by primitive means. Categories include:
  - 1. Fire suppression (Note: See attached Tonto NF partial delegation of authority);
  - 2. Health and/or safety;
  - 3. Law enforcement involving serious crime or fugitive pursuit;
  - 4. Removal of deceased persons;
  - 5. Aircraft accident investigations;
- B. Exploration and development of valid existing mineral rights (FSM 2323.7).

### 4. **DISTRICT RANGER**

Responsible for making recommendations for approval/disapproval, and for implementation of decisions concerning all of the above.

### 5. **OTHER GOVERNMENT AGENCIES**

Approval of other government agency activity will be in the same manner and under the same criteria as for Forest Service use, as per the above.

# APPENDIX C

TONTO SUPPLEMENT 2300-98-1  
EFFECTIVE 04/02/98

2326.04c  
Page 2 of 4

## 2326.04c - Forest Supervisor's Responsibility.

### A. FIRE EMERGENCY

#### 1. INITIAL ATTACK

Authority is hereby delegated to the Engineering/Protection Group Leader (in consultation with the District Ranger and/or the District Fire Management Officer) to approve/disapprove the use of motorized equipment (i.e. use of powersaws, plus long-lining, sling-loading or landing of helicopters) within designated Wilderness Areas of the Tonto National Forest, when the following criteria are met:

- a. It is obvious the fire suppression situation involves an inescapable urgency and a temporary need for speed beyond that available by primitive means, AND
- b. When the National Fire Danger Rating for the Forest is "High" or above.

#### 2. SERVICING ONGOING FIRE

- a. A fire that is not contained within a one-hour initial attack period must be considered as escaped (the one-hour period begins when the first retardant drop is made, or when the first person arrives on the fire). At this time, an Escaped Fire Situation Analysis (EFSA) will be promptly prepared, as per FSM 5130.3. During this interim period of preparation (not to exceed 12 hours), the Engineering/Protection Group Leader is hereby delegated the authority to approve the use of indicated motorized equipment provided the criteria detailed under item #1 Initial Attack are still met.
- b. After approval of the EFSA, the Engineering/Protection Group Leader (after appropriate consultation) is hereby delegated the authority to approve use of motorized equipment (i.e. use of power saws, plus long-lining, sling-loading or landing of helicopter) as per provisions of the EFSA. Along with suppression of the fire, minimized use of motorized equipment will be a primary objective of all EFSA's involving Wilderness. Note: Any person dispatched to a Wilderness fire will be required to be equipped to be totally self-supporting for a 24-hour period.
- c. Once the fire is contained, opportunities exist for reducing the use of motorized equipment, and use thereof will only be authorized when there is no other practicable alternative.

## APPENDIX C (Continued)

TONTO SUPPLEMENT 2300-98-1  
EFFECTIVE 04/02/98

2326.04c  
Page 3 of 4

### 3. DEMOBILIZATION

Many opportunities exist for reducing use of motorized equipment during this period. Authority is hereby delegated to the Engineering/Protection Group Leader to approve the use of helicopters within designated Wilderness Areas of the Tonto National Forest when the following criteria are met:

- a. Other fire situations dictate prompt retrieval of specialized personnel, AND
- b. No other practicable means of retrieval are available, OR
- c. Personnel would be subjected to unreasonable health and safety hazards if motorized equipment is not utilized.

### B. SEARCH AND RESCUE EMERGENCY

The Forest Supervisor hereby approves the landing of helicopters within designated Wilderness Areas of the Tonto National Forest in search and rescue situations when the following criteria are met:

1. The situation involves an inescapable urgency and temporary need for speed beyond that available by primitive means, AND
2. The situation is potentially a threat to human life, OR
3. The situation involves removal of a human body.

Fulfillment of these criteria must be confirmed by the District Search and Rescue Coordinator. If fulfillment of the criteria can not be confirmed, the matter will be referred to the Public Service Group Leader for decision (See item C.3).

### C. OTHER DELEGATION

Authority is hereby delegated to the Public Service Group Leader (after appropriate consultation) to approve/disapprove the landing of helicopters, or dropping/picking up of any material, supplies, or person via helicopter within designated Wilderness Areas of the Tonto National Forest under the following conditions:

1. The situation involves an inescapable urgency and temporary need for speed beyond that available by primitive means, AND
2. Is for the purpose of law enforcement involving a serious crime (including collection of evidence of a very transitory nature) and/or fugitive pursuit, OR
3. Is for the purpose of search and rescue judged NOT to involve possible loss of human life, OR
4. Is for the purpose of official investigation of an aircraft accident.

D. RESPONSIBILITIES

This authorization to the Tonto's Engineering/Protection Group Leader and Public Service Group Leader is not redelegatable. For all situations which do not fall within specified criteria or time frames in items #A, B, or C above, or during periods when these individuals are unavailable, authority to approve will be with the Forest Supervisor, Deputy, or Acting Forest Supervisor, as per FSM 1239.

Each District Ranger will personally involve him or herself in the decision-making process whenever possible. In all cases, the Regional Forester's desire to minimize the use of motorized equipment within designated Wilderness Areas will be recognized.

Whenever motorized equipment is authorized, the authorizing officer shall notify the Forest Dispatcher. It will be the responsibility of the Forest Dispatcher to keep notes in the Dispatcher's log concerning such authorizations.

## APPENDIX D

### WILDERNESS OPPORTUNITY SPECTRUM SUMMARY OF COMPONENT OBJECTIVES FOR EACH OPPORTUNITY CLASS

	<i>OPPORTUNITY CLASS I</i>	<i>OPPORTUNITY CLASS II</i>	<i>OPPORTUNITY CLASS III</i>	<i>OPPORTUNITY CLASS IV</i>
<b>RESOURCE SETTING</b> (General Description)	Unmodified natural environment.	Unmodified natural environment.	Unmodified natural environment.	Predominantly unmodified natural environment.
1) Ecological Conditions	Not measurably affected by the action of users.	Minimally affected by the action of users.	Moderately affected by the action of users.	Many locations substantially affected by the action of users.
2) Prevalence and Duration of Impact Behavior	Temporary loss of vegetation where camping occurs and along some travel routes. Typically recovers annually.	Minor loss of vegetation where camping occurs and along most travel routes. Most impacts recover annually.	Moderate loss of vegetation and soil on major travel routes, campsites, and popular lake shores. Some impacts persist.	Same as Class III. Impacts persist from year to year.
3) Visibility of Impacts	Not apparent to most visitors.	Apparent to only a low number of visitors.	Apparent to a moderate number of visitors.	Impacts are readily apparent to most visitors.
<b>SOCIAL SETTING</b> (General Description)	Outstanding opportunity for isolation and solitude.	High opportunity for isolation and solitude.	Moderate opportunity for isolation and solitude.	Moderate to low opportunities for isolation and solitude.
1) General Level of Encounters	Very infrequent.	Low.	Moderate.	Moderate to High.
2) Degree of Challenge and Risk	Very High.	High.	Moderate.	Moderate to Low.
3) Interparty Contacts While Travelling	Very Few.	Low.	Moderately Frequent.	Relatively High.
4) Interparty Contacts at the Campsite	Non-existent.	Fairly Low.	Moderately Frequent.	Common.

## APPENDIX D (Continued)

	<i>OPPORTUNITY CLASS I</i>	<i>OPPORTUNITY CLASS II</i>	<i>OPPORTUNITY CLASS III</i>	<i>OPPORTUNITY CLASS IV</i>
<b>MANAGERIAL SETTING</b> (General Description)	Strongly emphasize sustaining and enhancing the natural ecosystem.	Emphasize sustaining and enhancing the natural ecosystem.	Emphasize sustaining and enhancing the natural ecosystem.	Emphasize sustaining and enhancing the natural ecosystem.
1) Contact with Management Personnel During Normal Use Season	Infrequent	Minimum	Routine	Frequent
2) Rules and Regulations and Visitor Behavior	Will be communicated to visitors primarily outside of the Wilderness at trailheads or boundary portals.	Same as Class I	Where necessary, on-site enforcement and communication of rules and regulations will be conducted.	Same as Class III
3) Formal and Informal User Education Programs.	Will be initiated to inform users about what to expect and how to use the area for the optimum benefit to all.	Same as Class I	Same as Class I	Same as Class I
4) Formal Rules and Regulations	May be necessary to achieve management objectives and permits may be considered only when light-handed, less restrictive measures have consistently failed to achieve desired goals and objectives.	Same as Class I	Same as Class I	Same as Class I
5) Presence and Extent of Signing	No trail signs present.	Trail signs permitted. Will provide only minimum information necessary to protect the resource.	Signs will be permitted. Will provide only minimum information necessary to protect the resource and for administration.	Signs will be placed to aid in distributing and dispersing use, and for resource protection.
6) General Level Trail Construction and Maintenance	Trails will not be constructed. Maintenance conducted only to protect the resource.	Managed to accommodate light and infrequent travel. Maintained only for resource protection and minimal user safety.	Managed to accommodate moderate use. Maintained only for resource protection and moderate user safety.	Managed to accommodate heavy traffic. Maintained for resource protection, user safety, and limited user convenience.
7) Presence of Facilities	None provided or permitted.	Very few provided or permitted and only for resource protection.	Moderate number provided or permitted and only for user and resource protection.	May be provided or permitted for resource protection and user safety.

Note: See LRMP, page 255, for full WOS Class descriptions.

## APPENDIX E

### LIMITS OF ACCEPTABLE CHANGE INDICATORS AND STANDARDS FOR THE SUPERSTITION WILDERNESS

#### STANDARDS

INDICATOR	WOS Class I	WOS Class II	WOS Class III	WOS Class IV	SAMPLING TECHNIQUE
1. Horseback groups encountered per day.	0	3	4	4	Based on observations while travelling.
2. Backpack groups encountered per day.	1	3	4	4	Based on observations while travelling.
3. Day-hiking groups encountered per day.	1	3	6	40	Based on observations while travelling.
4. Maximum size of group.	6	15	15	15	Based on observations.
5. Maximum number of horses / mules in a group.	0	15	15	15	Based on observations.
6. Number of occupied backcountry camps within 100 yards of selected camp(s).	0	1	3	3	Based on observations and conversations.
7. Condition of inventoried backcountry camp.	See LAC standards listed in Appendix F	Same	Same	Same	Use Form FS-R3-12-2300-1(1-92)
8. Number of low-flying aircraft seen or heard nearby (i.e. 2,000' or less above ground level) per day.	0	0	1	1	Based on observations.
9. Number of uncontrolled dogs encountered per day.	0	0	1	1	Based on observations
10. Number of non-indigenous animals encountered per day (excluding dogs, horses, mules, burros, and cattle).	0	0	0	0	Based on observations
11. Number of gun shots. This does not include legal hunting activities.	0	0	0	0	Based on observation and conversations.

## APPENDIX E (Continued)

### STANDARDS

INDICATOR	WOS Class I	WOS Class II	WOS Class III	WOS Class IV	SAMPLING TECHNIQUE
12. Condition and trend of vegetation/soils.	90% in fair (or better) condition with "no apparent" or "upward" trend	Same	Same	Same	Data to be taken from Range Allotment analysis.
13. Quality of surface water.	According to standards and policies established by ADEQ in "Water Quality Standards for Waters of the State".	Same	Same	Same	Sampling directed by Forest Water, Soil, and Air Staff.
14. Condition of aquatic macro-invertebrate community.	75+	75+	75+	75+	Aquatic monitoring using macro-invertebrate analysis in specific situations selected by Forest Wildlife Biologist. Standard is Biotic Condition Index (B.C.I.).
15. Air quality.	According to interim standards established in Arizona Wilderness AQRV Workshop Report.	Same	Same	Same	Sampling directed by Forest Water, Soil, and Air Staff.
16. Number of technical climbing fixed anchors per one acre. Each one acre area is designated according to legal mapping system (G. & S. R. B. L. & M.).	Currently established at present number of fixed anchors. Interim moratorium exists; no fixed anchors installed or removed.	9.5 of 2/4/92 (R.O.M.) Same	Same	Same	Use Climbing Site Inventory Analysis Form.

## APPENDIX F

### LIMITS OF ACCEPTABLE CHANGE INDICATORS AND STANDARDS FOR BACKCOUNTRY CAMPS IN THE SUPERSTITION WILDERNESS

IMPACT PARAMETER	LEVEL OF SEVERITY				LAC STANDARDS FOR EACH WOS CLASS			
	0	1	3	5	I	II	III	IV
1. Litter	None.	A few small pieces of litter and/or up to 30 sec. clean-up time.	Moderate amount of litter and/or up to 3 min. clean-up time.	Widespread litter, graffiti and/or more than 10 min. clean-up time.	0	1	3	4
2. Rock fire rings	None.	1 small fire ring and/or up to 2 minutes clean-up time.	1 large or 2 medium and/or up to 10 minutes clean-up time.	More than 3 any size and/or more than 20 min. clean-up time.	1	1	2	3
3. Charcoal/Fire scars outside of rock ring	None.	Up to 10 sq. feet of area effected.	Up to 50 sq. feet of area effected	More than 75 sq. feet of area effected	0	1	2	3
4. Camp modifications	None.	Slight evidence of linear or radial rock/log arrangements.	Some constructions: e.g. rock/log arrangements, nails in trees, trenching; up to 10 min. clean-up time.	Well developed constructions: benches, shelves, tables, leveled tent pad; more than 20 min. clean-up time.	0	1	2	2
5. Human/Dog feces	None.	Not evident to casual observer.	1 exposed fresh pile.	More than 3 exposed piles, or 1 fresh pile with paper.	0	1	2	3
6. Horse manure	None.	2 or 3 old piles, or 1 fresh pile.	5 old piles, or 3 fresh piles.	More than 7 old piles, or more than 5 fresh piles.	0	2	3	5
7. Cattle manure	None.	2 or 3 old piles, or 1 fresh pile.	5 old piles, or 3 fresh piles.	More than 7 old piles, or more than 5 fresh piles.	1*	2*	3*	4*
8. Nearby camps	None within 100 yards.	1 camp within 100 yards.	3 camps within 100 yards.	5 or more camps within 100 yards.	0	1	3	3
9a. Access trails to camp (recreation)	None.	No more than 1 temporary trail.	3 temporary trails or no more than 2 well worn trails.	More than 4 temporary trails or more than 3 well-worn trails.	0	2	3	3
9b. Access trails to camp (non-recreation)	None.	No more than one temporary trail.	3 temporary trails or no more than 2 well worn trails.	More than 4 temporary trails or more than 3 well-worn trails.	1*	2*	3*	3*

\* - LAC standard is 0 (zero) in Superstition grazing allotment.

**APPENDIX F (continued)**

IMPACT PARAMETER	LEVEL OF SEVERITY				LAC STANDARDS FOR EACH WOS CLASS			
	0	1	3	5	I	II	III	IV
10. Barren core area	None.	Up to 10 sq. feet.	31 to 60 sq. feet.	More than 100 sq. feet.	0	2	3	4
11. Tree and shrub damage	None.	A few small tree branches or bushes bent, flattened, or browsed.	2 to 4 substantial tree branches or bushes broken, cut, or damaged; or heavy browsing/tree bark gnawed.	More than 6 substantial branches or bushes broken, cut, or damaged; or death of a tree or bush.	1	2	2	3
12. Vegetation cover	No difference in coverage class.	Difference of 1 coverage class.	Difference of 3 coverage classes.	Difference of 5 coverage classes.	0	0	1	2
13. Mineral soil cover	No difference in coverage class.	Difference of 1 coverage class.	Difference of 3 coverage classes.	Difference of 5 coverage classes.	0	0	1	2

## APPENDIX G

### SUPERSTITION WILDERNESS ACCESS TRAVEL MANAGEMENT

<i>Access Point</i>	<i>Road</i>	<i>Road Management Strategy<sup>1</sup></i>	<i>Maintenance Level<sup>2</sup> Current / Proposed</i>	<i>Traffic Service Level<sup>3</sup> Current / Proposed</i>	<i>Directional Signing<sup>4</sup></i>
First Water Trailhead	78	Accept low clearance use; encourage high clearance and 4x4 use.	3 / 3	D / C	Access road; cross road.
Canyon Lake Trailhead	Hwy 88	Encourage all use.	N/A	N/A	Access road.
Tortilla Well	213		2 / -	D / -	
Reavis Trailhead	212	Accept low clearance use; encourage high clearance and 4x4 use.	3 / 2	D / C	Access road; cross road.
Two Bar Ridge	83	Discourage low and high clearance use; accept 4x4 use.	2 / 2	D / D	None
Tule Trailhead	449	Accept low clearance use; encourage high clearance and 4x4 use.	3 / 3	D / C	Access road; cross road.
Upper Horrel Trailhead	449 A	Discourage low and high clearance use; accept 4x4 use.	2 / 2	D / D	Access road.
Horrel Creek	306	Discourage low clearance use; accept high clearance and 4x4 use.	2 / 2	D / D	None
Burro Spring	305	Discourage low clearance use; accept high clearance and 4x4 use.	2 / 2	D / D	None
Miles Ranch Trailhead	287 A	Accept low clearance use; encourage high clearance and 4x4 use.	2 / 2	D / C	Access road; cross road.
Rogers Trough Trailhead	172 A	Discourage low and high clearance use; accept 4x4 use.	2 / 2	D / D	Access road.
Spencer and Rock Creek Trails	650	Discourage all use.	2 / 2	D / D	None
Woodbury Trailhead	172	Discourage low clearance use; encourage high clearance and 4x4 use.	2 / 2	D / C	Access road.
Peralta Trailhead	77	Accept low clearance use; encourage high clearance and 4x4 use.	3 / 3	D / C	Access road; cross road.
Massacre Grounds	28	Discourage all use.	2 / 2	D / D	None

1- Derived from Guide for Traffic Control Devices on Forest Development Roads. USDA, Forest Service; 1983.

2- See Tonto LRMP, Appendix F, page 247.

3- See Region 3 Resource Access and Travel Management Reference Handbook.

4- This describes the only road(s) on which directional signing may be placed. 'Access road' is the road leading directly to the access point. 'Cross road' is the road from which the access road branches.

## APPENDIX H

### GRAZING ALLOTMENTS COVERING THE SUPERSTITION WILDERNESS

NAME	DISTRICT	APPROXIMATE ACRES IN WILDERNESS (thousands)	APPROVED AMP	PERMITTED NUMBERS (AS OF Oct. 1998)
Bar V Bar / Campaign	Tonto Basin	14.6	yes	575 CYL; 365 Yrl 1/1 - 5/31
Millsite	Mesa	13.2	yes	307 CYL; 197 Yrl 1/1 - 5/31
Pinto Creek	Globe	6	yes	486 CYL; 340 Yrl 1/1 - 5/31
Roosevelt	Tonto Basin	7.3	yes	166 + 65 CYL; 125 + 47 Yrl 1/1 - 5/15
Schoolhouse	Tonto Basin	0.2	yes	150 CYL; 117 Yrl 1/1 - 5/15
Superior	Globe	1	yes	314 CYL; 174 Yrl 1/1 - 5/31

C = cattle

YL = yearlong

Yrl = yearling

AMENDMENT NO.1

Replacement Page H-1

## APPENDIX H

### GRAZING ALLOTMENTS COVERING THE SUPERSTITION WILDERNESS

NAME	DISTRICT	APPROXIMATE ACRES WITHIN WILDERNESS (Thousands)	APPROVED AMP	PERMITTED NUMBERS (As of Jan. 1992)
Bar V Bar / Campaign	Tonto Basin	11.5	Yes	575 CYL; 365 Yrl 1/1 - 5/31
Brushiest	Globe	15.5	Yes	110 CYL
Millsite	Mesa	13.5	Yes	307 CYL; 197 Yrl 1/1 - 5/31
Pinto Creek	Globe	4.0	Yes	486 CYL; 340 Yrl 1/1 - 5/31
Reavis	Mesa	28.0	Yes	1,000 Yrl 1/1 - 5/31, 11/15 - 12/31
Roosevelt	Tonto Basin	7.5	Yes	166 + 65 CYL; 125 + 47 Yrl 1/1 - 5/15
Schoolhouse	Tonto Basin	0.1	Yes	150 CYL; 117 Yrl 1/1 - 5/31
Superior	Globe	0.7	Yes	279 + 35 CYL; 155 + 19 Yrl 1/1 - 5/31
Superstition	Mesa	44.0	Yes	Vacant
Tortilla	Mesa	23.0	Yes	800 Yrl 1/1 - 6/15, 11/5 - 12/31

C = cattle  
YL = yearlong  
Yrl = yearlings

obsolete