

Stockton Pass Allotment Management Plan

Safford Ranger District  
Coronado National Forest

Prepared By: Chuck Duncan Date: 01-18-08  
Chuck Duncan, Range/Watershed Staff

Agreed to By: [Signature] Date: 2-15-08  
Stockton Pass Cattle Co., Permittee

Approved By: Toni L. Strauss Date: 2-21-08  
Toni L. Strauss, District Ranger

### Description

The Stockton Pass Allotment is located on the south side of the Pinaleno Mountains. It is a large allotment consisting of 22,546 acres, of which 17,441 acres are classified as capable for livestock grazing. Areas classified as "not capable" primarily consist of steep slopes in the upper elevations of the allotment. One hundred forty five cattle graze yearlong using a nine pasture high intensity short duration grazing system.

### Goals and Objectives

The goal of this plan is to maintain a healthy ecosystem on the forest, meet the needs and desires of the American public, and provide the Permittee's family an opportunity to utilize the forage resource in an environmentally sensitive and cost effective manner.

This will be accomplished through pursuit of the following objectives:

- A. Use best management practices to maintain a healthy ecosystem.
- B. Improve animal husbandry practices to improve pounds of beef production while minimizing impacts on the plant resource. Utilization of forage source will not exceed 45%.
- C. Maintain or enhance habitat conditions for resident wildlife by improving ground cover and riparian conditions.
- D. Maintain soil condition.
- E. Maintain or improve visual quality of grazing allotment, through improvement of livestock management, maintaining range improvements and improving plant density and diversity.
- F. Manage livestock impacts to meet Coronado N.F. Land Management Plan Objectives for riparian areas.
- G. Continue to maintain water sources for wildlife when cattle are not scheduled in pasture.

### Management Strategy

Management of the Stockton Pass Allotment will be a nine pasture high intensity short duration grazing system. Permitted stocking is 145 cattle yearlong, cattle are rotated through the nine pastures. Forest pastures are: Shake, North, CN, Upper Cove, Lower Cove, Upper Home, Lower Home, Oak Draw, and Horse Pasture. Implementation of this AMP will be documented in the Annual Operating Instructions (AOI) developed in coordination between the Forest Service and the permittee. The AOI will set forth the maximum permissible grazing use authorized for the upcoming grazing season, the planned sequence of grazing, improvements to be constructed, reconstructed, or maintained, allowable use or other standards to be followed by the permittee, and required monitoring for the grazing season.

### Terms and Conditions of the Biological Opinion

The U.S. Fish and Wildlife Service completed the Final Biological Opinion on the Continuation of Livestock Grazing on the Coronado National Forest in October 2002. The Service concluded that grazing on the Stockton Pass Allotment as proposed in this AMP may affect, likely to adversely affect the Lesser Long Nosed Bat. The grazing system will help mitigate the effects of grazing on the LLNB. A recent BA&E was completed in November 2007.

### Livestock Distribution

Distribution of livestock within each pasture will attempt to minimize concentration of animals and the resulting overgrazing of "soft" areas. Methods to be used to improve distribution are placement of salt and protein supplement in areas of good feed; at least ¼ mile from water sources, horseback movement of cattle, control of waters where feasible, and use of existing fences.

### Range Improvements

The following range improvements are planned:

- Conduct prescribed burn in Lower Home, Upper Home and Oak Draw Pastures – Scheduled for May or June 2009 or when condition allow.
- Reconstruct division fences damaged by fire approximately 2 miles.
- Lengthen Saddle Tank Pipeline three miles. Two miles to Oak Draw Corrals, and one mile to Hill Top Storage with 1 1/4 inch 200 psi black plastic pipe and install two 10,000 gallon water storage.

### Range Improvement Maintenance Schedule

It is the permittee's responsibility to keep range improvements in a good working manner.

### Monitoring

Progress towards the goals of this plan and the Coronado National Forest Land Management Plan will be monitored through periodic range inspections by the permittee, Forest Service, and other interested parties. Key areas have been selected for monitoring annual forage utilization (see attached map). The District Range Staff and the permittee will jointly monitor key areas in each pasture as the pasture is grazed to assure that forage use levels in individual pastures are maintained within the established limits of 45% use of the current year production in uplands and 40% use in riparian areas.

Cattle should be distributed throughout the pasture to prevent areas of overuse. Normally, when any key areas begin to reach the stated use objective and/or areas of heavy use are apparent throughout the pasture, it will mean that cattle will need to be moved.

Utilization of the key area will be compared to overall pasture conditions to determine if it is time to move livestock from the pasture. This determination will be made in coordination with the permittee. If a determination is made that livestock must be moved to the next designated pasture and if evaluations of forage conditions in the next pasture indicate insufficient forage, then the livestock will be moved off the Forest.

Pace Frequency Transects, and permanent photo points will be used to document soil and vegetative condition and trend. Periodic production and utilization studies will further evaluate range capacity. The monitoring aspect will be to determine if the applied management is or is not leading to or meeting the Forest Plan objectives and goals. Should this monitoring show trends that are not moving toward or meeting forest plan objectives, replanning or stocking adjustments will be initiated. The permittee will be invited to assist in all monitoring procedures.

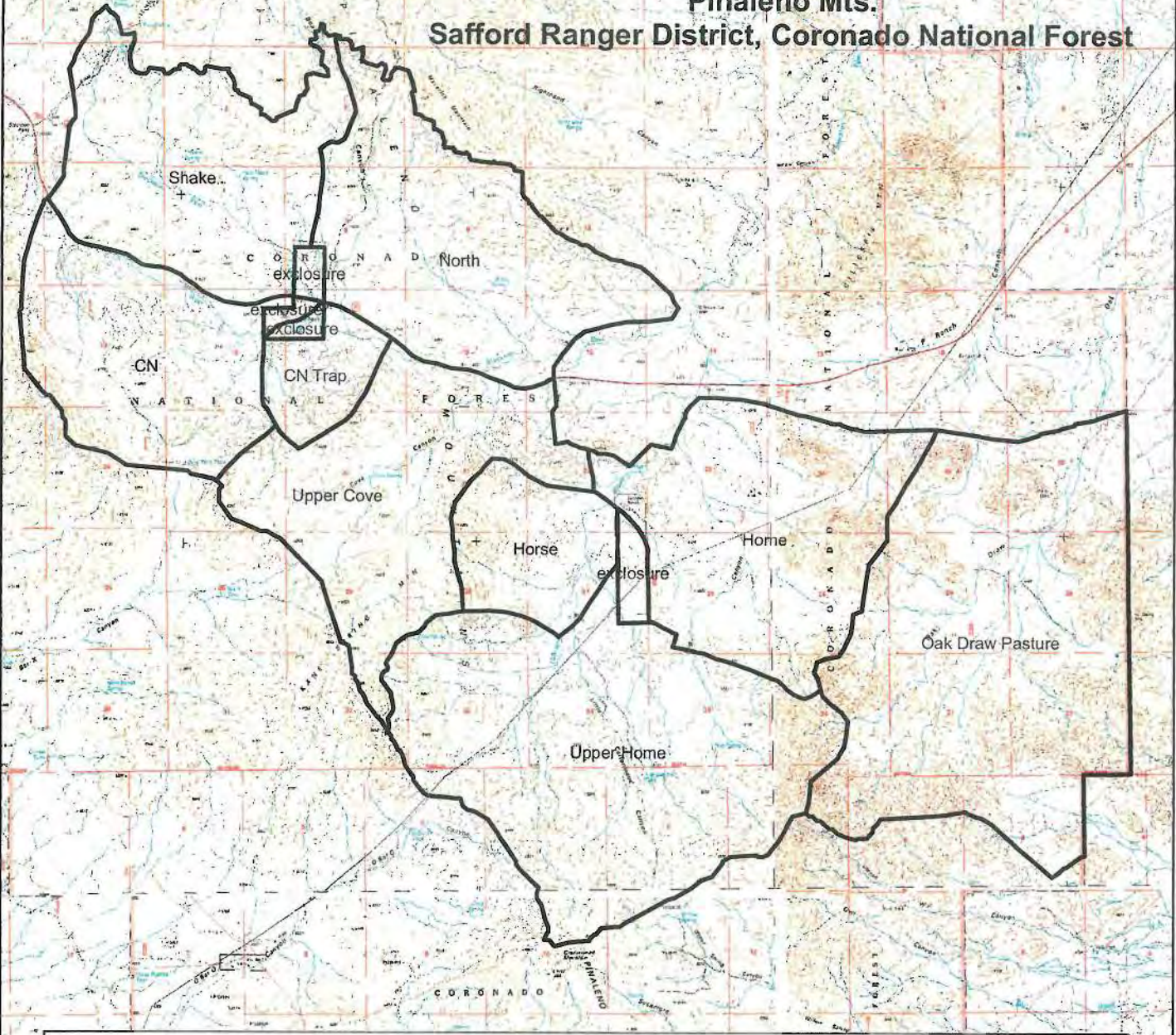
#### Flexibility

Minor adjustments to this plan in response to changing weather, prescribe burns, etc., will be made through agreement between the District Ranger and the Permittee and will be appropriately documented. Significant changes will require a written amendment to this plan.

#### Attached Documents

- A. Map of Allotment

**STOCKTON PASS ALLOTMENT with PASTURES**  
**Pinaleno Mts.**  
**Safford Ranger District, Coronado National Forest**





The Forest Service makes no expressed or implied warranty with respect to the character, function, or capabilities of the data or their appropriateness for any user's purpose; represented features may not be in an accurate geographic location. The Forest Service reserves the right to correct, update, modify, or replace this geo-spatial information without notification.

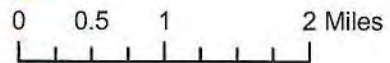
Drafted 03/12/2007 by Marc G. Kaplan, Coronado National Forest



**Legend**

 Stockton Pass Allotment Pastures

 Burned Pasture Fences



1:80,000

1 inch equals 1.262626 miles

