



United States  
Department of  
Agriculture

Forest Service

2020



# Allotment Management Plan

## Ranger Station Allotment

Globe Ranger District  
Tonto National Forest  
Arizona

This Allotment Management Plan implements direction established in the October 1985 Tonto National Forest Plan and the April, 2013 Decision for Ranger Station Allotment. This Allotment Management part of your Term Grazing Permit in accordance of that permit.

Agreed to by:

Frank Dalmolin

Betty Sue Dalmolin or Frank Dalmolin or  
Ben Dalmolin  
Ranger Station Permittee

Date: 2-24-2020

Approved by:

Mark Sando

Mark Sando  
Globe District Ranger

Date: 2/24/2020

## Table of Contents

Allotment Description .....	3
Management Objectives .....	3
Allotment Management .....	3
Permitted Use .....	3
Grazing System .....	3
Allotment Management Practices.....	4
Livestock Aids and Animal Husbandry.....	4
Adaptive management .....	5
Monitoring.....	6
Allowable Forest Utilization & Stubble Height Standards.....	6
Key Areas .....	6
Travel Management Guidelines .....	8
Range Improvements .....	8
Responsibilities .....	8
Maintenance Practices and Re-development Specifications .....	9
Improvement Development Standards.....	9
New Improvements .....	11
Existing Improvements .....	11

# Ranger Station Allotment Management Plan

## Allotment Description

Ranger Station Allotment is located in Gila County approximately four miles south of Globe, Arizona. Lands within this allotment are managed by Globe Ranger District of Tonto National Forest, and currently encompass about 3,849 acres of National Forest System.

Ranger Station Allotment is located in the foothills of Globe and range to the top of Pinal Mountains. It lies primarily between Ice House Canyon and divide between Russell Gulch and Kellner Canyons. The elevation runs approximately 3,800 to 7,600 feet. Aspect is predominately north and consists of sections of semi-desert grassland and chaparral, with pockets of ponderosa pine.

## Management Objectives

Ranger Station allotment analysis identified the following as objectives for livestock management:

- Maintain a minimum of 30% effective ground cover for watershed protection and forage production. Where less than 30% exists, it will be the management goal to obtain a minimum ground cover.
- Increase perennial forage plants throughout allotment.
- Maintain physiological needs of remnant grass populations.

## Allotment Management

### Permitted Use

Grazing season is yearlong from March 1 to February 28. Permitted Animal Unit Month (AUM) authorized for Ranger Station is 624 or 52 head of adult cattle which includes cow/calf pairs, any replacements, stockers, bulls, and yearling carry over. For AUM calculation purposes, a cow/calf pair, bull, and dry cow are 1.0 animal units and a yearling is 0.7 animal units.

Yearling carryover are the progeny that remain on the allotment after December 31 and are typically removed in May.

Annual authorized numbers may be adjusted by the District Ranger based on the results of monitoring, climatic conditions, implementation of management practices, and discussions between permittee and range staff.

### Grazing System

Cattle will follow a rotational or deferred grazing system. A four pasture rotation system where Mountain pasture will be rested *generally* every other year and grazed typically from July to December. Table 1 displays an example rotation schedule but may be adjusted as needed following adaptive management strategies outlined in this AMP.

Table 1: General Rotation Schedule

Sequence	Year A	Year B	Year C	Year D
First	Northwest	Hayes	Northwest	Southeast
Second	Mountain	Northwest	Hayes	Mountain
Third	Southeast	Southeast	Mountain	Hayes
Rest	Hayes	Mountain	Southeast	Northwest

## Allotment Management Practices

### Livestock Aids and Animal Husbandry

Livestock management, such as herding and salting, is critical to control cattle in appropriate pastures. Permittee will furnish sufficient riders or herders for proper distribution, protection, and management of cattle on the allotment. Livestock hauling by truck and trailer on open roads may be used where appropriate.

- Salt, protein, and other nutritional supplements may be used to support livestock health and improve distribution, but should not be placed any closer than ¼ mile from riparian and wetland areas and developed recreation sites or within/adjacent to known heritage sites. If closer locations are needed, they will be authorized annual in the AOI. Salt locations should be rotated periodically. Salt will not be placed in Mexican Spotted Owl Protected Activity Centers. Salt will be placed in pasture corresponding with livestock grazing.
- Cattle should be drifted instead of trailed wherever possible. Livestock should not be trailed through riparian areas.
- When entering next scheduled pasture, all livestock shall be removed from previous pasture within two weeks to avoid unauthorized or excess use charges.
- Permittee may be asked to provide the Forest Service with an actual use records and/or improvement maintenance.
- Livestock will be excluded from improved recreation areas and facilities through approved positive control methods that will meet Forest Plan requirements.
- If livestock are reaching allowable use levels in riparian areas (see Allowable Use Table 2), livestock will be moved to next pasture. At end of year, monitoring and other techniques may be used to determine if grazing levels are generally above these levels and make recommendations in AOI meetings to resolve. Further monitoring may be completed to determine if changes in carrying capacity is necessary.
- After a climatic event, such as drought or flood, if monitoring indicates possible impacts to riparian woody species or herbaceous vegetation, restriction of livestock may be implemented.
- Livestock may be held in corrals for short periods of time for veterinary care or to be transported to another area. When this occurs, livestock may be fed in corrals.

## Adaptive management

Monitoring of forage availability and utilization, range readiness and resource conditions will be used to determine whether management is being properly implemented and whether the actions are effective at achieving or moving toward desired conditions. These strategies will be implemented through AOI and may occur at any time throughout grazing season in response to unforeseen environmental or management concerns.

If the following occur it may necessitate changes in management of this allotment:

- Through monitoring, management objectives are not being achieved, or trend toward desired conditions are not occurring;
- Annual indicators of grazing use or guidelines are or are not met, consistently;
- Climatic events, fire, flood, or uses and activities detrimentally impacting resource conditions.

Then the following actions may be enacted:

- Extending or shortening time in pastures based on utilization levels in uplands and riparian areas;
- Assessing pasture readiness and changing its position in the seasonal rotation;
- Time or season of pasture use;
- Resting a pasture for one or more growing seasons;
- Decrease or increase herd size within limits of permitted numbers;
- Herding livestock;
- Excluding livestock from specific areas temporarily or permanently for other resource objectives;
- Changing or limiting season of use to minimize impacts to riparian vegetation;
- Changing class of animals;
- Modifying pasture rotations;
- Turning off water;
- Identify range improvement needs.

If monitoring indicates management objectives are not being met, the range specialist, in consultation with permittee and other resource specialists as appropriate, will evaluate:

1. Potential cause for not meeting desired conditions or indicator;
2. Level of effect of not meeting desired conditions or indicators may have on objectives;
3. Need to implement alternative actions under adaptive management strategies define above, and
4. Document action to be implemented to address management changes in AOI.

## Monitoring

### Allowable Forest Utilization & Stubble Height Standards

It is the permittee's responsibility to manage livestock grazing to the following allowable use levels.

Table 2: Allowable Use

Vegetation	Use Threshold
Upland Herbaceous Use	30-40% of current year's growth
Upland Browse Species	50% of current year's growth
Riparian Herbaceous Use	Limited to 40% of plant species biomass and maintain 6-8 inches of stubble height of species like Deer Grass
Riparian Woody Species	Limited to 50% of leaders browsed on upper 1/3 plants up to 6 feet tall
Mexican Spotted Owl PAC's	20% optimum to 40% maximum, Manage Mexican Spotted Owl and Northern Goshawk habitats within the project are according to standards and guidelines in 1984 Tonto NF Plan (Replacement Pages 40-1 Through 40-13).

Monitoring techniques will follow accepted Forest Service protocols. Data collection procedures and interpretation would consider guidance contained in the Principles of Obtaining and Interpreting Utilization Data on Southwest Rangelands (Smith et al. 2005), Interagency Technical Reference 1734-3 "Utilization Studies and Residual Measurements" and "Sampling Vegetation Attributes" (1996) and the Forest Service Region 3 Rangeland Analysis and Management Training Guide (June 1997).

Monitoring activities may be carried out by grazing permittee and/or Forest Service either during or at the end of grazing season. All monitoring results will be shared at annual meetings to improve livestock management. All monitoring information provided by permittees and Forest Service will be included in district allotment file.

In Mexican Spotted Owl territory, range management related trips will be spread throughout owl breeding season and limited to 7 or fewer trips per Protected Activity Center (PAC) annually. Data will be collected during daylight hours.

### Key Areas

A key area / reach is selected on merits of its location, grazing or browsing value, and representation of an area, pasture, or allotment. It serves as a monitoring and evaluation point for range condition, trend, or degree of grazing use. Key areas / reaches may be added as needed and should be properly selected to reflect the overall acceptability of current grazing management relative to the rangeland condition. Annual monitoring in a key area / reach is for short-term data collection, referred to as implementation monitoring. Periodic monitoring on five to ten year intervals for vegetation trend will include cover and frequency methods. Long-term, or effectiveness monitoring, trend data measures change in plant

community composition, cover, structure, soil conditions, frequency, and is useful for describing trends due to grazing management.

Key reaches and areas established on the Ranger Station allotment are shown in Table 3 and Table 4.

*Indicators of changed trend for vegetation include:*

- Desirable and intermediate species decreased in vigor.
- Lack of young plants from desirable and intermediate species.
- Invasion by undesirable species.
- Hedged and high-lined shrubs. Dead branches, generally indicating that shrubs are dying back.

*Indicators of changed trend in soil stability include:*

- Rill marks, which are small but conspicuous water channels around vegetation.
- Active gullies are raw, actively down-cutting, and may have head-cuts. This type of gully may vary from a few inches to several feet deep.
- Alluvial deposits; soil material transported and laid down as small fans in headwater drainages.
- Soil remnants; original topsoil held in place by vegetation or roots.
- Active terraces; usually caused by hooves of animals; stair step in appearance on side-slopes
- Pedestalled plants; exposed plant crown or roots.
- Wind-scoured depressions between plants, or wind deposits of soil
- Soil buildup behind plants, logs, and trees on upslope side.

Table 3: Known Key Area Locations

Study Name	Location
Parker Cluster 1	T1S R15E sec. 16
Parker Cluster 2	T1S R15E sec. 22
Parker Cluster 3	T1S R15E sec. 15
Pace 1	T1S R15E sec. 10
Pace 2	T1S R15E sec. 16
Pace 3	T1S R15E sec. 21
Pace 4	T1S R15E sec. 32
Pace 5	T1S R15E sec. 33

Table 4: Riparian Key Areas

Riparian Area	Pasture	Description
Icehouse Canyon	Mountain pasture	Potential key area. Upper two miles fall within Mexican Spotted Owl Protected Activity Center.
Kellener Canyon	Northwest pasture	Key Area: Extending from campground to private land.

## Travel Management Guidelines

The Forest Service Travel Management Rule, which generally prohibits off-road vehicle use, includes an exemption for “motor vehicle use that is specifically authorized under a written authorization issued under Federal law or regulations” (36 CFR 261.13(H)). Grazing permits fall under this exemption.

The following on-going activities requiring motor vehicle use off of designated routes would be authorized by the grazing permit to conduct livestock grazing activities on National Forest System lands within the Tonto National Forest:

Off-road vehicle use by pickup, trailer, ATV, UTV, or motorcycle needed to transport materials or machinery to maintain or inspect structural range improvements (fences, corrals, cattle guards, pipelines, water delivery systems, troughs, earthen tanks) assigned in Part 3 of the grazing permit as the permit holder’s responsibility for maintenance are authorized. Existing routes or the shortest, most direct route to the improvement must be used and route construction (i.e. blading a path) would not be allowed without additional authorization.

Using an off-road vehicle to place supplements in strategic locations for livestock management purposes may be authorized by the District Ranger in the Annual Operating Instructions when requested.

Vehicle use to gather or move livestock off-road would not be authorized.

Cross-country motorized travel would not be allowed when conditions are such that cross-country travel would cause unacceptable natural and/or heritage resource damage.

Off-road use of heavy equipment (i.e. backhoe, dozer, loader, etc.) may be authorized in the Annual Operating Instructions or by a separate permit modification for range improvement development, as needed.

## Range Improvements

### Responsibilities

The permittee is responsible for maintenance of range improvements constructed on the Ranger Station allotment for the course of their usable life. Maintenance practices and re-development specifications are listed below. When the improvement is no longer serviceable it will be scheduled for reconstruction or removed/decommissioned when no longer needed.

Re-development work will be discussed with the permittee at AOI meetings. A schedule will be created to prioritize redevelopment work across the allotment and bring improvements up to the following specifications over time.

Development of an improvement schedule will serve as a guideline to bring all improvements up to the following standards and practices.

Where appropriate, a permit modification will authorize:

- Further specific requirements, including those listed below, on maintenance, reconstruction or new construction.
- Ensure equipment working in known areas of weed infestations are properly mitigated. Such as thorough cleaning before exit from site or avoidance.
- Relocation or redesign of improvement to protect historic properties being impacted by grazing.

All improvements in Protected Activity Center (PAC) for Mexican Spotted Owl, within Mountain pasture, will require all work conducted outside breeding season breeding season of March 1 through August 31. If work is approved during breeding season use hand tools and work during daylight hours. When within ¼ mile of PAC, materials will be brought to site via horseback or foot. Perform work within shortest amount of time possible. Approvals outside of these stipulations could be made by Forest Official if appropriate clearances are received.

### Maintenance Practices and Re-development Specifications

Construction or re-development of range improvements in or within ¼ mile of a PACs for Mexican Spotted Owls will not occur during owl breeding season: March 1 through August 31. Improvements in or within ¼ mile of PACs may be maintained during the breeding season using hand tools and working during daylight hours only. Travel to improvements near PACs located off open roads will be on foot or horseback. Perform any work within shortest amount of time possible. These conservation measures only apply during the breeding season and in or within ¼ mile of a PAC.

Existing or planned improvements may be relocated or redesigned to protect historic properties being impacted by grazing.

### Improvement Development Standards

#### Springs

1. All spring source facilities and headboxes should be adequately protected (i.e. buried or encased) or fenced. Headboxes will be constructed of concrete, metal, treated wood or other durable material. Initial pipeline, inside the box, should be fitted with a tee to prevent debris from entering the pipe.
2. Horizontal wells must contain a shut off valve and reducer. Entire exterior of the well can be earth covered to prevent freezing.

#### Pipelines

3. Diameter of pipe should be large enough to carry the flow of the water development but not less than 1 inch.
4. Inlet and outlet pipe are protected by anchoring to trough with a single post next to the vertical pipe and a brace or pole supporting the horizontal pipe. Inlet and outlet pipeline will be buried as much as possible for their protection.
5. All above ground pipeline supported structures will be maintained to keep pipe at gradient and prevent sagging.

6. Pipelines with air and drain valves will be covered with fine screen to prevent rodents and dirt from entering pipeline. Screens must be replaced as needed.
7. Pipeline leaks will be repaired or damaged section will be replaced with materials similar to materials from original construction.
8. Pipelines with valve covers boxes will be kept covered and repaired when needed.

#### Troughs and Storage tanks

9. Troughs will be kept at heights that make them useable to livestock and trough bottom kept clear of ground when possible. Troughs which become elevated or uneven from trampling or erosion is periodically backfilled to maintain a useable height, authorization may be needed.
10. Excess water in trough will be contained in an overflow pipe at least 50 feet away or nearest drainage. End of overflow pipe must be protected from trampling by livestock.
11. New water developments will be constructed in uplands to encourage livestock use out of the bottoms.
12. All existing or future water developments that have open tops (i.e. troughs, open top storage tanks) must have escape and access ramps. All escape ramps will be built of expanded metal or similar materials and extend to bottom of trough and sides. Ramp will be firmly secured to trough rim so it will not be knocked loose by animals. Access ramps will be constructed of durable material such as concrete or metal. Slope will not exceed 45 degrees. Further design specifications may be required from "Water for Wildlife" by Taylor and Tuttle 2007.
13. Water should be available for wildlife year round in livestock troughs, except in freezing conditions.
14. Troughs, storage tanks, and pipelines will be drained and cleaned periodically to prevent moss and debris buildup and damage from freezing.
15. Poles, posts, and trough framing materials used in water development construction will be maintained, repaired, or replaced as needed. Materials must not be taller than the trough and wires should not be placed over trough to allow for watering avian species.

#### Stock Tanks

16. Stock tanks will be kept clear of debris, floating logs, dead animals, etc. Spillways will be cleaned and maintained to prevent washing out or becoming plugged. Rodent damage and damaging vegetation on dams will be reported to Forest officer. Depending on level of work, permit modification may be required.

#### Fence

17. All broken wire will be spliced and repaired and re-stretched to keep tension. Wire splices will be made with 12 gauge size tie wire or type of wire used in initial construction.
18. Broken or rotted posts, braces or stays will be replaced where needed to maintain wire tension.
19. Top wire on all range fences should be kept at 42 inches in height, and bottom wire should be smooth and 18 inches above ground. General maintenance will adhere to original construction, unless required by Forest Official. Reconstruction will be to these outlined standards.

#### Gates

20. All gates are closed before livestock enter new pastures and opened and tied back after livestock leave pasture, unless otherwise needed.
21. Wire gate tension should be sufficient to prevent gate from sagging and still be easily opened and closed. Gate loops are made of smooth wire, not barbed wire.

#### Corrals

22. Broken or rotten sections of corrals will be replaced as needed to maintain useable condition.

#### General

23. All improvement components (e.g., rusted out troughs, broken sections of pipe, wire etc.) replaced during maintenance or reconstruction will be removed from Forest and properly disposed of.
24. Any maintenance or reconstruction of improvements throughout Mountain pasture will need to meet Forest Plan standards and management for Management Area 2D, Pinal Mountain Recreation Area (1985 TNF Plan, as amended).

### **New Improvements**

New improvement construction will be authorized by the District Ranger by permit modification and will include construction specifications such as materials, time frames, and other requirements based on location and needs. Once completed, the improvement will be added to the permittees maintenance responsibilities.

### **Existing Improvements**

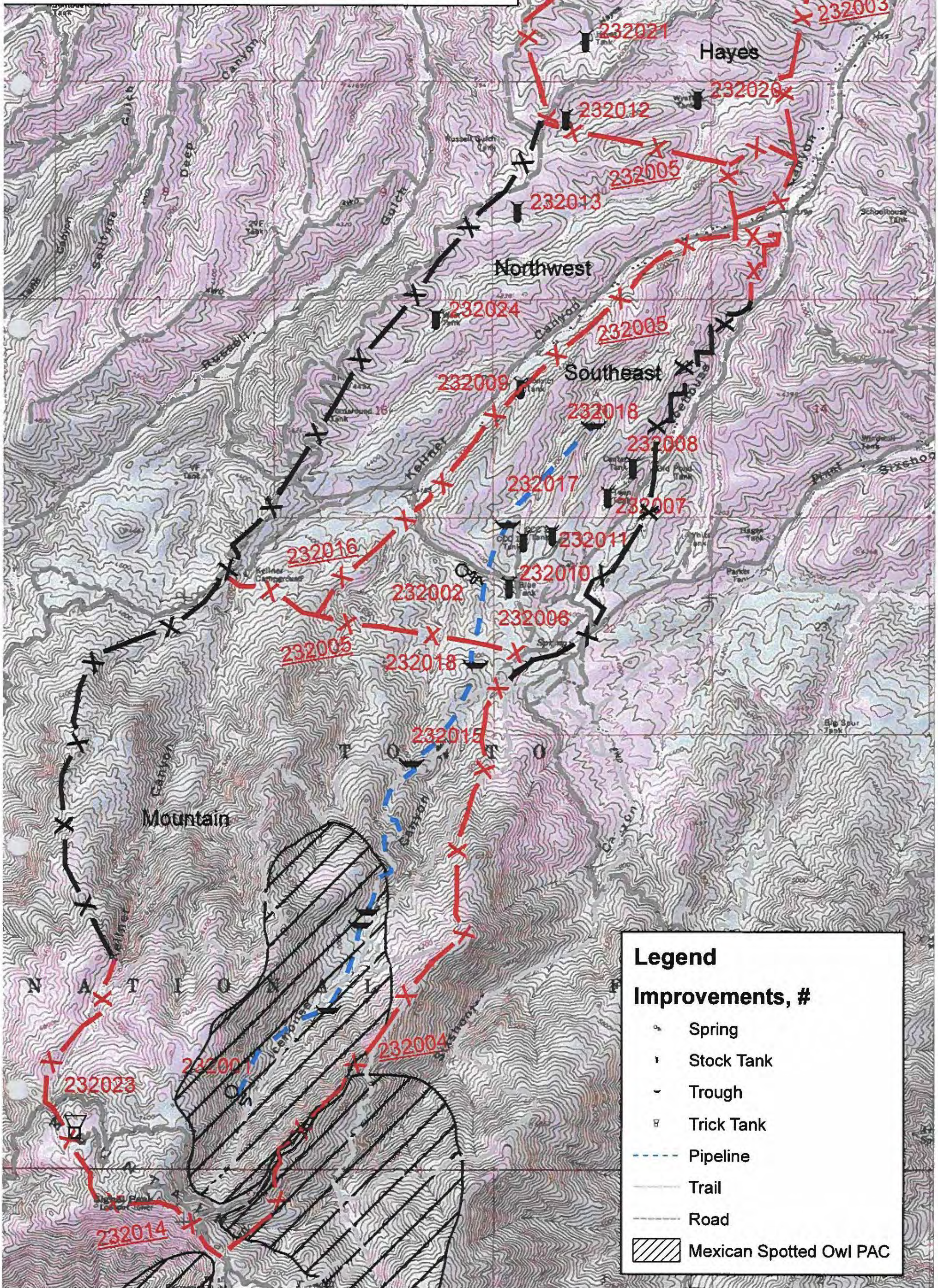
The table on Page 12 and 13, lists the structural range improvements of the Ranger Station allotment. The Ranger Station permittee is assigned the maintenance responsibility of each improvement listed.

Improvement Name	Improvement Number	Units	Location	Responsibility
Doghouse Spring	232001	1.0 each	T1S R15E sec. 32	Ranger Station
Sheppard Spring	232002	1.0 each	T1S R15E sec. 21	Ranger Station
Hayes Allotment Boundary Fence	232003	2.0 miles	Hayes Pasture	Ranger Station
Ranger Station/Coolidge Parker Boundary Fence	232004	3.2 miles	Cattleguard on 651, Mountain pasture, north to Division Fence 232005	Ranger Station
Ranger Station Pasture Division Fence	232005	2.0 miles	Northwest, Southeast Pasture	Ranger Station
Blue Stock Tank	232006	1.0 each	T1S R15E sec. 22	Ranger Station
Twin Stock Tank	232007	1.0 each	T1S R15E sec. 15	Ranger Station
Center Stock Tank	232008	1.0 each	T1S R15E sec. 15	Ranger Station
Convict Stock Tank	232009	1.0 each	T1S R15E sec. 16	Ranger Station
CCC #1 Stock Tank	232010	1.0 each	T1S R15E sec 22	Ranger Station
CCC #2 Stock Tank	232011	1.0 each	T1S R15E sec 22	Ranger Station
Hayes WD Tank	232012	1.0 each	T1S R15E sec. 10	Ranger Station
Big Gully WD Tank (or Rene WD Stock Tank)	232013	1.0 each	T1S R15E sec. 9	Ranger Station
Ranger station/Jones Allotment Boundary Fence	232014	2.0 miles	From Pinal Mtn. Rd. north to Coolidge-Parker	Ranger Station
Doghouse Pipeline	232015	2.0 miles	T1S R15E sec. 21, 28, 32, 33	Ranger Station

Improvement Name	Improvement Number	Units	Location	Responsibility
NW/SE Division Fence	232016	0.75 miles	T1S R15E sec. 10, 11, 15, 16, 21	Ranger Station
Doghouse Pipeline and Extension #1	232017	3.0 miles	T1S R15E sec. 21, 28	Ranger Station
Doghouse Pipeline Extension Trough #1	232018	1.0 each	T1S R15E sec. 21	Ranger Station
Hayes NW Fence	232019	2.0 each	T1S R15E sec. 10	Ranger Station
Wyatt Stock Tank	232020	1.0 each	T1S R15E sec. 10	Ranger Station
Hayes Stock Tank	232021	1.0 each	T1S R15E sec. 3	Ranger Station
Ranger Station Trick Tank	232023	1.0 each	Mountain Pasture	Ranger Station
West Stock Tank	232024	1.0 each	Northwest Pasture	Ranger Station

Globe Ranger District  
 Ranger Station Allotment Improvement Map  
 Term Grazing Permit Page 10

This map shows the area designated by grazing permit  
*Made Sent 2/24/2020* District Ranger, Date



**Legend**

**Improvements, #**

- Spring
- ⌋ Stock Tank
- Trough
- ⌋ Trick Tank
- - - Pipeline
- - - Trail
- - - Road
- ▨ Mexican Spotted Owl PAC