

**ARIZONA GAME AND FISH DEPARTMENT
HABITAT PARTNERSHIP COMMITTEE
HABITAT ENHANCEMENT AND WILDLIFE MANAGEMENT PROPOSAL**

Game Branch / HPC Project Number: _____

PROJECT INFORMATION

Project Title: Zapata Ranch Cooperative Water Development Project

Region and Game Management Unit: 5, 32

Local Habitat Partnership Committee (LHPC):

- Tucson

Was the project presented to the LHPC?

YES NO

Has this project been submitted in previous years? YES NO

If Yes, was it funded? YES NO → **Funded HPC Project #(s):**

Project Type: Cooperative Water Development with Rancher through EQUIP

Brief Project Summary:

The purpose of this project is to work cooperatively with Jack and Catherine Mann of the Zapata Ranch to increase wildlife populations by providing dependable, long term, self-sustaining, quality water sources. The addition of these water sources improves animal distribution and habitat utilization by increasing the use of otherwise unavailable forage resources. Hunter opportunity will also increase as a result of improved wildlife populations.

Big Game Wildlife Species to Benefit: Mule deer, whitetail deer, javelina, small game and non-game

Implementation Schedule (Month/Day/Year):

Project Start Date: September 1, 2014

Project End Date: August 31, 2016

Environmental Compliance:

NEPA Completed: Yes No N/A

Projected Completion Date: through NRCS

State Historic Preservation Office - Archaeological Clearance:

Yes No N/A

Projected Completion Date: through NRCS

Arizona Game and Fish Department EA Checklist: N/A

To be Completed by: _____

Projected Completion Date: _____

PROJECT FUNDING

Special Big Game License Tag Funds Requested:

\$ 4,037

Cost Share or Matching Funds: EQUIP-NRCS

\$ 40,370

Total Project Costs:

\$ 44,407

PARTICIPANT INFORMATION

Applicant (please print):

Ben Brochu

Address:

555 N. Greasewood Road

Tucson, AZ 85745

E-mail:

bbrochu@azgfd.gov

Telephone: 520-591-7636

Date: August 31, 2014

AGFD Contact and Phone No. (If applicant is not AGFD personnel):

Project has been coordinated with:
NRCS, ASLD, AGFD

NEED STATEMENT – PROBLEM ANALYSIS:

Water is a critical component of mule deer habitat. Deer habitat, no matter how attractive, will not be utilized if it is not near a source of water. Water sites should be no more than 2-3 miles apart and even closer in rough terrain (Wildlife Management Handbook, Managing Desert Mule Deer). WAFWAs Habitat Guidelines for Mule Deer support this suggesting that water sources not be more than 3 miles apart so all mule deer habitat is within 1.5 miles of a permanent water source (Brownlee 1979, Dickinson and Garner 1979). Water is extremely scarce in the range and is only present in earthen stock tanks after a heavy monsoon period and during the winter and early spring months and seldom lasts into May. Marshal et al. (2006) stated that water in the absence of forage and cover likely will not create mule deer habitat, but forage and cover in the absence of water may provide deer habitat, at least seasonally. Thus, catchments might make forage resources, which would otherwise be unavailable, available year-round. Further, where deer might otherwise make seasonal movements between parts of their range with forage and parts with water, developments may reduce the need for seasonal movements, make a greater proportion of the range and its forage available to deer, reduce competition for forage in exploited range, decrease risks associated with long-distance movements (e.g., Nicholson et al. 1997, Bleich and Pierce 2001) and, thereby, increase deer abundance (Krausman and Czech 1998).

PROJECT OBJECTIVES:

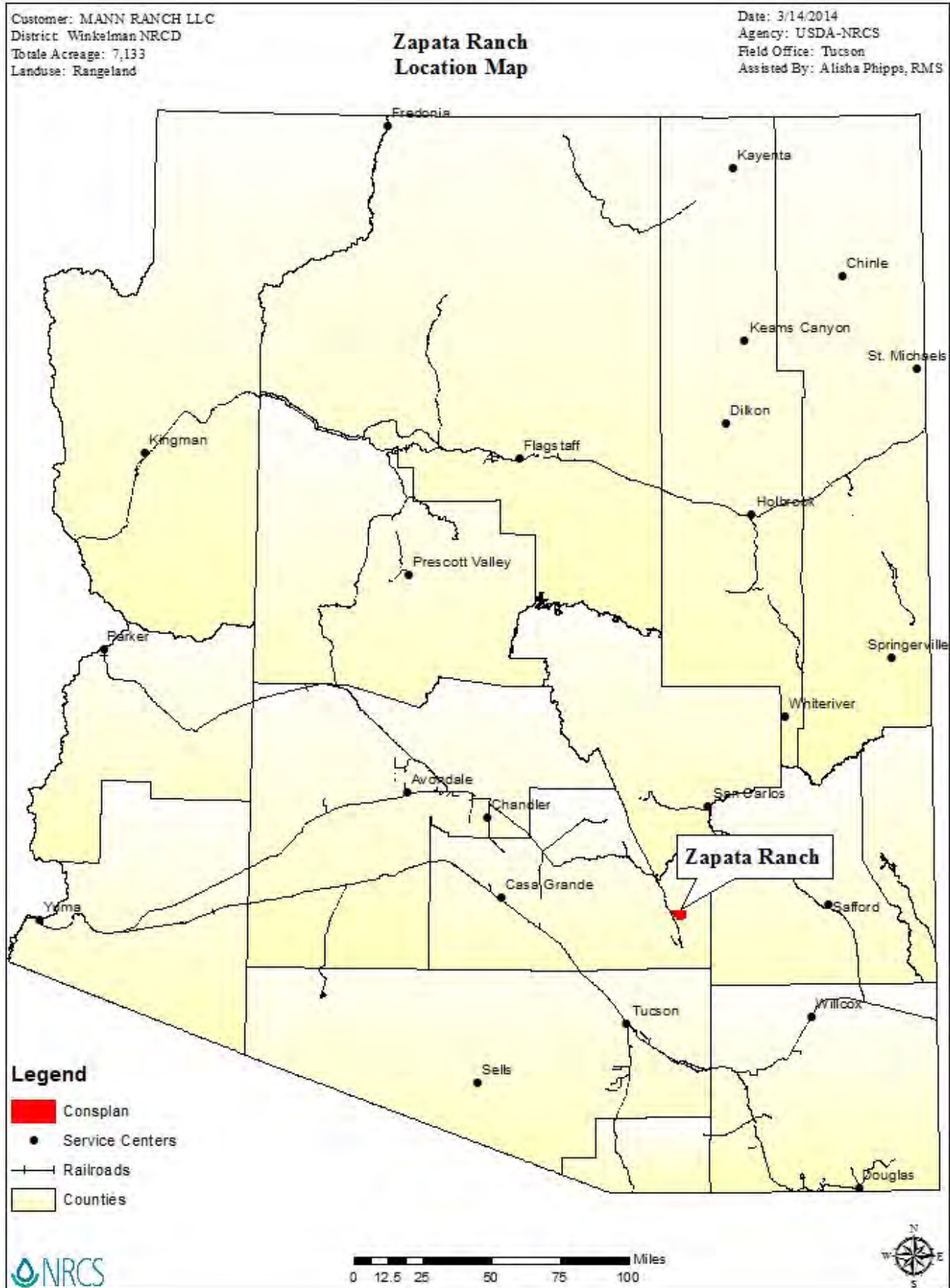
- To increase deer and javelina populations by providing dependable, long term, self-sustaining, quality water sources and by increasing the use of otherwise unavailable forage resources
- To increase hunter opportunity
- To work cooperatively with ranchers to better manage both wildlife and livestock.

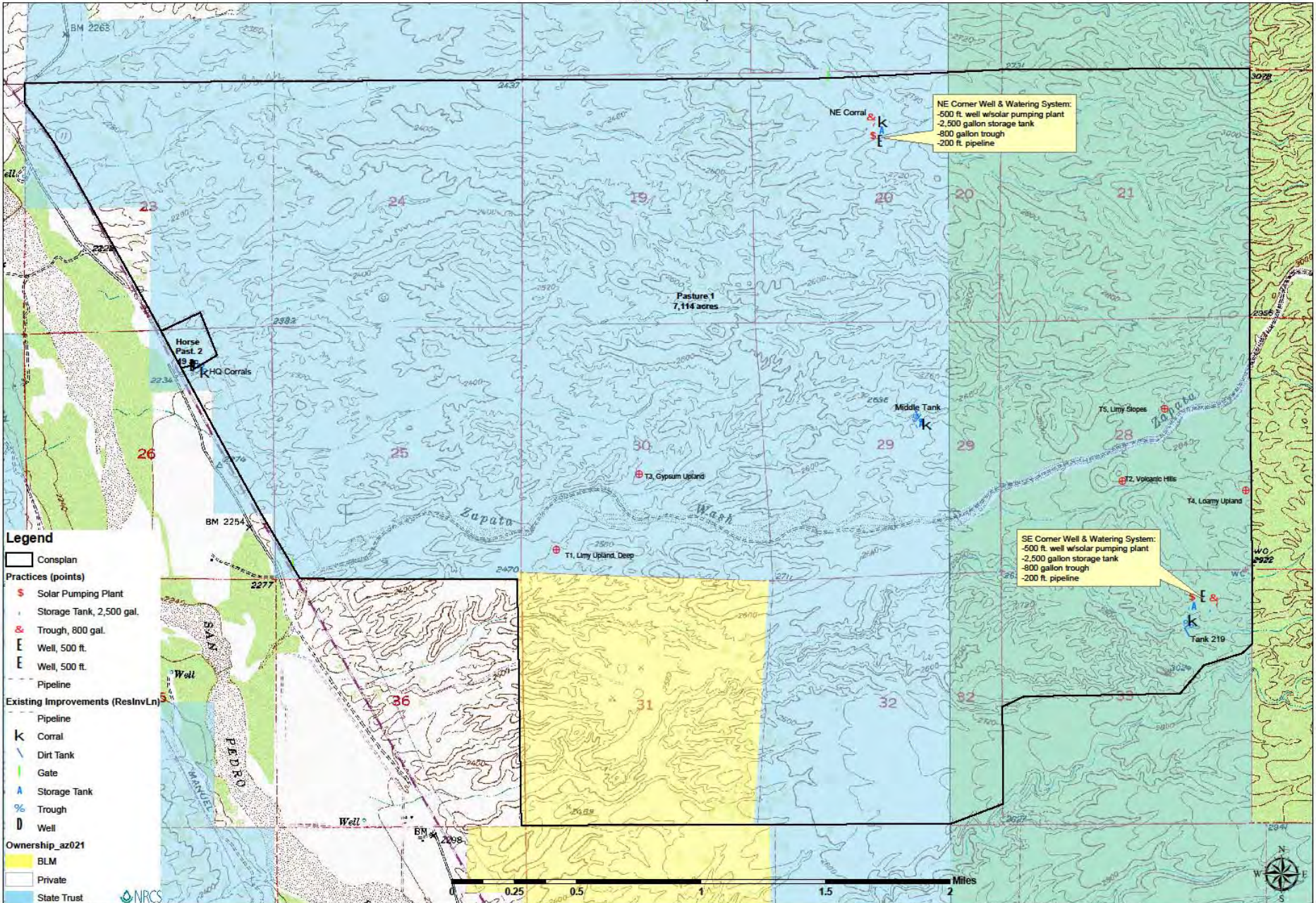
PROJECT DESCRIPTION AND STRATEGIES:

The purpose of this project is to provide water for livestock and/or wildlife in order to meet daily water requirements and improve animal distribution and habitat utilization. See attached conservation plan and schedule of operations for specific details.

Installation shall be in accordance with all NRCS drawings, specifications and special requirements. Installation shall be done in such a manner that erosion and air and water pollution are minimized and held within legal limits.

PROJECT LOCATION:





LAND OWNERSHIP AT THE PROJECT SITE(S):

(if the project area is private property, please state specifically and provide the landowner’s name)

- The project site is on land administered by the Arizona State Land Department, Tucson Field Office, 4455 S. Park Avenue Suite 101 Tucson, Arizona 85714 (520) 628-5480.

IF PRIVATE PROPERTY, IS THERE A COOPERATIVE BIG GAME STEWARDSHIP or LANDOWNER AGREEMENT BETWEEN THE LANDOWNER AND THE DEPARTMENT?
 YES[X*] NO[] N/A[]

* A cooperative big game stewardship agreement between the AGFD and the Mann’s will be developed if the project is funded.

HABITAT DESCRIPTION:

The project area is located in Pinal County, Arizona, southeast of Phoenix. Two main biotic community types, Sonoran Desertscrub and Semidesert Grassland, comprise the bulk of the habitat in this area.

ITEMIZED USE OF FUNDS:

Special Big Game License Tag Funds

\$4,037 – To be used for the installation of project components.

Cost Share or Matching Funds (for volunteer labor rates please refer to the worksheet below)

EQUIP funds at 90% cost share - \$40,370

LIST COOPERATORS AND DESCRIBE POTENTIAL PARTICIPATION:

- Jack and Catherine Mann – Zapata Ranch Operators – to oversee project completion.
- NRCS – Administer the EQUIP Contract and associated compliance paperwork

WOULD IMPLEMENTATION OF THIS PROJECT ASSIST IN PROVIDING, MAINTAINING, OR FACILITATING RECREATIONAL ACCESS?

YES[X] NO[] N/A[]

PROJECT MONITORING PLAN:

See attached conservation plan. The operators will oversee this.

PROJECT MAINTENANCE:

See attached conservation plan. The operators will oversee this.

PROJECT COMPLETION REPORT TO BE FILED BY:

Ben Brochu

WATER DEVELOPMENT PROJECTS (please use the worksheet below):

Not applicable as this is not an AGFD wildlife water. Available water is extremely scarce in this area. Aravaipa creek provides water to the north while perennial water is available in the Copper Creek area to the south.

TREE CLEARING/REMOVAL PROJECTS (please use the worksheet below):

ARIZONA GAME AND FISH DEPARTMENT **WATER DEVELOPMENT WORKSHEET**

PROJECT TITLE: Not Applicable – EQUIP Contract

- 1) **Is the water development listed as a priority in the most recent “Wildlife Water Development Annual Implementation Schedule?”**
- 2) **Please list the Development Branch personnel and date coordinated with for this project.**
- 3) **What is the estimated annual inches of precipitation for the area? (mark one)**
2-4 4-6 6-8 8-10 10-12 12-14 14-16 >16
- 4) **Is there a perennial water source available to big game within four miles of this project?**

YES (please complete #5 below) NO (skip #5 below)
- 5) **For the accessible, perennial water source nearest this project:**
Name of water source:
Type of water source (catchment, spring, dirt tank):
Ownership of water source:
Distance in miles from project:
- 6) **Is the target wildlife species a result of transplant efforts? YES NO**
- 7) **Please list any special land management status for the project site (i.e. Wilderness, National Park, National Monument). If private land, list landowner.**
- 8) **Please provide the following information about access to the proposed site:**
Type of access (mark one): 2x4 vehicles 4x4 only foot only**

**If foot access only: Distance in miles: _____ Approximate hiking time: _____

-- Does access to this site require crossing private or tribal lands? YES NO

-- Please describe any restrictions to public access:
- 9) **Please list below (or on a separate sheet) the material type and dimensions of each component proposed to be added, modified, or repaired.**
- 10) **Was a site visit completed? Yes No**
If Yes, please list personnel that attended and date.

CONSERVATION PLAN OR SCHEDULE OF OPERATIONS

PARTICIPANT MANN RANCH LLC	COUNTY AND STATE PINAL County, AZ	PROGRAM AND CONTRACT NUMBER EQIP 2014 7494571400R	SUBACCOUNT Tucson Rangeland (Tucson)	
LAND UNITS OR LEGAL DESCRIPTION Farm:4959 Tract(s):5266.		WATERSHED Zapata Wash-San Pedro River	ACRES 7133	EXPIRATION DATE 8/31/2016

Contract Item 1: Water Well(642) **Practice Lifespan:** 20 years **Status:** Planned 2015

Install a well. Drill a new livestock well, planned for 500 feet deep.

Fields:
Tract: 5266 Fields: 1;

Contract Item	Planned Conservation Treatment	Planned Amount	Unit Cost	Cost Share Rate/Method	COMPLETION SCHEDULE AND ESTIMATED COST-SHARE OR PAYMENT BY YEAR											
					2015 \$	2016 \$										
1	Water Well(642)	1 no			12,030											
1a	HU-Well >300-600 Ft	500 LnFt	\$24.0600/LnFt	PR ¹	12,030											

Notes: ¹Payment rates define the unit cost rate of compensation to be received by the participant.

Contract Item 2: Pumping Plant(533) **Practice Lifespan:** 15 years **Status:** Planned 2015

Install a solar pumping facility to transfer water for a need(s).

Fields:
Tract: 5266 Fields: 1;

Contract Item	Planned Conservation Treatment	Planned Amount	Unit Cost	Cost Share Rate/Method	COMPLETION SCHEDULE AND ESTIMATED COST-SHARE OR PAYMENT BY YEAR											
					2015 \$	2016 \$										
2	Pumping Plant(533)	1 no			3,067											
2a	HU-Photovoltaic-Powered Pump	1 Ea	\$3,066.0600 / Ea	PR ¹	3,067											

Notes: ¹Payment rates define the unit cost rate of compensation to be received by the participant.

Contract Item 3: Water Well(642) **Practice Lifespan:** 20 years **Status:** Planned 2015

Install a well. Drill a new livestock well, planned for 500 feet deep.

CONSERVATION PLAN OR SCHEDULE OF OPERATIONS

PARTICIPANT MANN RANCH LLC	COUNTY AND STATE PINAL County, AZ	PROGRAM AND CONTRACT NUMBER EQIP 2014 7494571400R	SUBACCOUNT Tucson Rangeland (Tucson)	
		WATERSHED Zapata Wash-San Pedro River	ACRES 7133	EXPIRATION DATE 8/31/2016

Fields:
Tract: 5266 Fields: 1;

Contract Item	Planned Conservation Treatment	Planned Amount	Unit Cost	Cost Share Rate/Method	COMPLETION SCHEDULE AND ESTIMATED COST-SHARE OR PAYMENT BY YEAR											
					2015 \$	2016 \$										
3	Water Well(642)	1 no			12,030											
3a	HU-Well >300-600 Ft	500 LnFt	\$24.0600/ LnFt	PR ¹	12,030											

Notes: ¹Payment rates define the unit cost rate of compensation to be received by the participant.

Contract Item 4: Pumping Plant(533)					Practice Lifespan: 15 years					Status: Planned 2015						
Install a solar pumping facility to transfer water for a need(s).																
Fields: Tract: 5266 Fields: 1;																
Contract Item	Planned Conservation Treatment	Planned Amount	Unit Cost	Cost Share Rate/Method	COMPLETION SCHEDULE AND ESTIMATED COST-SHARE OR PAYMENT BY YEAR											
					2015 \$	2016 \$										
4	Pumping Plant(533)	1 no			3,067											
4a	HU-Photovoltaic-Powered Pump	1 Ea	\$3,066.0600 / Ea	PR ¹	3,067											

Notes: ¹Payment rates define the unit cost rate of compensation to be received by the participant.

CONSERVATION PLAN OR SCHEDULE OF OPERATIONS

PARTICIPANT MANN RANCH LLC	COUNTY AND STATE PINAL County, AZ	PROGRAM AND CONTRACT NUMBER EQIP 2014 7494571400R	SUBACCOUNT Tucson Rangeland (Tucson)	
		WATERSHED Zapata Wash-San Pedro River	ACRES 7133	EXPIRATION DATE 8/31/2016

Contract Item 5: Watering Facility(614) Practice Lifespan: 20 years Status: Planned 2016

Purpose: The purpose of this practice is to provide water for livestock and/or wildlife in order to [X] meet daily water requirements [X] improve animal distribution Design Capacity The storage tank has been design for the following livestock needs. Kind of Animals [cattle] Number of Animals [30] Daily Water Use [15] Days of Storage [3] Capacity Gal [2500] Materials: All materials shall be new. Storage Tank Height [<=8] Ft. Storage Tank Diameter [] Ft. or Length [] Ft. Width [] Ft. Wall Materials [] Galvanized Steel [] Concrete [X] Polyethylene [] Fiberglass Wall Thickness [] Material Standards [] Floor Material [] Roof or Cover Material [] Galvanized steel pipes for inlets [1.25] in dia. Galvanized steel pipes for outlets [1.25] in dia. Brass shutoff valves size [1.25] in. Wildlife escape ramps [] Sand, gravel, or other porous foundation material Site Preparation: Storage tanks shall be located on solid ground with no erosion or ponding. Clear all trees, brush and rubbish from the foundation and tank area. The area immediately surrounding the tank or trough shall be smoothed and graded to permit free drainage of surface water away from the storage tank. Level and compact the area under the storage tank. Place six inches of sand, gravel or other porous material on the foundation before the storage tank is placed. Construction Method: Installation shall be in accordance with all NRCS drawings, specifications and special requirements. Installation shall be done in such a manner that erosion and air and water pollution are minimized and held within legal limits. The owner, operator, contractor or other persons will conduct all work and operations in accordance with proper safety codes for the type of construction being performed with due regards to the safety of all persons and property. Prefabricated storage tanks shall be assembled using the manufacturer instructions. Storage tank sections shall be joined using [] galvanize

Fields:
Tract: 5266 Fields: 1;

Contract Item	Planned Conservation Treatment	Planned Amount	Unit Cost	Cost Share Rate/Method	COMPLETION SCHEDULE AND ESTIMATED COST-SHARE OR PAYMENT BY YEAR										
					2015 \$	2016 \$									
5	Watering Facility(614)	1 no				3,000									
5a	HU-Permanent Drinking/Storage >1000-5000 Gallons	2500 Gal	\$1.2000/ Gal	PR ¹		3,000									

Notes: ¹Payment rates define the unit cost rate of compensation to be received by the participant.

Contract Item 6: Livestock Pipeline(516) Practice Lifespan: 20 years Status: Planned 2016

Purpose: The purpose of a pipeline is to convey water from a source of supply to points of use for livestock, wildlife, or recreation. Site Preparation: Distribution of livestock watering sources should be such that animals need not travel more than 1 mile nor less than ½ mile between forage and a dependable water source on gentle terrain and not more than ½ mile nor less than ¼ mile on rough terrain. The pipeline shall have a capacity to supply the seasonal high daily water requirements from the source(s) of water to the watering facility for the total number of animals expected to be using the watering facility(ies) supplied by the pipeline. Establishment: Materials and installation procedures for the pipeline will meet the requirements found in Arizona NRCS conservation practice standard 516, Pipeline, and any supporting conservation practice standards. The installation specification will include and/or address capacity, pipe type, pipe size, installation method, drainage, vents, pressure relief (if needed), check valves (if needed), joints, screens (if needed), and protection. Operation and Maintenance: The NRCS lifespan of this conservation practice is 20 years. Operation and maintenance actions to be taken to maximize the life of the pipeline include regularly check to make sure all valves and vents are in and set at the operating condition, open and close all valves in a manner that controls or limits water hammer, maintain all screens and filters in good working condition and promptly repair or replace, maintain the design depth of cover over the pipeline, maintain any erosion protection necessary to protect the pipeline, limit traffic over the pipeline, remove all foreign debris that hinders system operation, drain all components in areas that are subject to freezing when the pipeline is not in use, in continuous flow pipeline systems maintain a continuous flow to avoid freezing, immediately repair any damage to the pipeline

Fields:

CONSERVATION PLAN OR SCHEDULE OF OPERATIONS

PARTICIPANT MANN RANCH LLC		COUNTY AND STATE PINAL County, AZ	PROGRAM AND CONTRACT NUMBER EQIP 2014 7494571400R				SUBACCOUNT Tucson Rangeland (Tucson)				
			WATERSHED Zapata Wash-San Pedro River				ACRES 7133	EXPIRATION DATE 8/31/2016			

Tract: 5266 Fields: 1;

Contract Item	Planned Conservation Treatment	Planned Amount	Unit Cost	Cost Share Rate/Method	COMPLETION SCHEDULE AND ESTIMATED COST-SHARE OR PAYMENT BY YEAR										
					2015 \$	2016 \$									
6	Livestock Pipeline(516)	200 ft				384									
6a	HU-HDPE (Iron Pipe Size & Tubing)	63 Lb	\$6.0900/ Lb	PR ¹		384									

Notes: ¹Payment rates define the unit cost rate of compensation to be received by the participant.

Contract Item 7: Watering Facility(614)					Practice Lifespan: 20 years					Status: Planned 2016					
<p>Purpose: The purpose of a watering facility (trough) is to protect and enhance vegetative cover through proper distribution of grazing, provide erosion control through better grazing management, and to protect streams, ponds and water supplies from contamination. Site Preparation: Distribution of livestock watering sources should be such that animals need not travel more than 1 mile nor less than ½ mile between forage and a dependable water source on gentle terrain and not more than ½ mile nor less than ¼ mile on rough terrain. The pipeline shall have a capacity to supply the seasonal high daily water requirements from the source(s) of water to the watering facility for the total number of animals expected to be using the watering facility(ies) supplied by the pipeline. Establishment: Materials and installation procedures for the trough will meet the requirements found in Arizona NRCS conservation practice standard 614, Watering Facility, and any supporting conservation practice standards. The installation specification will include and/or address capacity, material(s) used, float mechanism (if needed), inlet size, overflow provisions, installation method, drainage, and protection. Operation and Maintenance: The NRCS lifespan for this conservation practice is 10 years. Operation and maintenance activities include regular inspection to check for and correct as needed: debris, algae, sludge, sediment or other materials in the trough which may restrict the inflow, outflow or capacity of the trough, leaks, automatic water level device, outlet pipe is operating freely and not causing erosion problems, and corrosion or electrolysis.</p>															
Fields:															
Tract: 5266 Fields: 1;															
Contract Item	Planned Conservation Treatment	Planned Amount	Unit Cost	Cost Share Rate/Method	COMPLETION SCHEDULE AND ESTIMATED COST-SHARE OR PAYMENT BY YEAR										
					2015 \$	2016 \$									
7	Watering Facility(614)	1 no				1,704									
7a	HU-Permanent Drinking/Storage > 500-1000 Gallons	800 Gal	\$2.1300/ Gal	PR ¹		1,704									

Notes: ¹Payment rates define the unit cost rate of compensation to be received by the participant.

CONSERVATION PLAN OR SCHEDULE OF OPERATIONS

PARTICIPANT MANN RANCH LLC	COUNTY AND STATE PINAL County, AZ	PROGRAM AND CONTRACT NUMBER EQIP 2014 7494571400R	SUBACCOUNT Tucson Rangeland (Tucson)	
		WATERSHED Zapata Wash-San Pedro River	ACRES 7133	EXPIRATION DATE 8/31/2016

Contract Item 8: Watering Facility(614) Practice Lifespan: 20 years Status: Planned 2016

Purpose: The purpose of this practice is to provide water for livestock and/or wildlife in order to [X] meet daily water requirements [X] improve animal distribution Design Capacity The storage tank has been design for the following livestock needs. Kind of Animals [cattle] Number of Animals [30] Daily Water Use [15] Days of Storage [3] Capacity Gal [2500] Materials: All materials shall be new. Storage Tank Height [<=8] Ft. Storage Tank Diameter [] Ft. or Length [] Ft. Width [] Ft. Wall Materials [] Galvanized Steel [] Concrete [X] Polyethylene [] Fiberglass Wall Thickness [] Material Standards [] Floor Material [] Roof or Cover Material [] Galvanized steel pipes for inlets [1.25] in dia. Galvanized steel pipes for outlets [1.25] in dia. Brass shutoff valves size [1.25] in. Wildlife escape ramps [] Sand, gravel, or other porous foundation material Site Preparation: Storage tanks shall be located on solid ground with no erosion or ponding. Clear all trees, brush and rubbish from the foundation and tank area. The area immediately surrounding the tank or trough shall be smoothed and graded to permit free drainage of surface water away from the storage tank. Level and compact the area under the storage tank. Place six inches of sand, gravel or other porous material on the foundation before the storage tank is placed. Construction Method: Installation shall be in accordance with all NRCS drawings, specifications and special requirements. Installation shall be done in such a manner that erosion and air and water pollution are minimized and held within legal limits. The owner, operator, contractor or other persons will conduct all work and operations in accordance with proper safety codes for the type of construction being performed with due regards to the safety of all persons and property. Prefabricated storage tanks shall be assembled using the manufacturer instructions. Storage tank sections shall be joined using [] galvanize

Fields:
Tract: 5266 Fields: 1;

Contract Item	Planned Conservation Treatment	Planned Amount	Unit Cost	Cost Share Rate/Method	COMPLETION SCHEDULE AND ESTIMATED COST-SHARE OR PAYMENT BY YEAR												
					2015 \$	2016 \$											
8	Watering Facility(614)	1 no				3,000											
8a	HU-Permanent Drinking/Storage >1000-5000 Gallons	2500 Gal	\$1.2000/ Gal	PR ¹		3,000											

Notes: ¹Payment rates define the unit cost rate of compensation to be received by the participant.

Contract Item 9: Livestock Pipeline(516) Practice Lifespan: 20 years Status: Planned 2016

Purpose: The purpose of a pipeline is to convey water from a source of supply to points of use for livestock, wildlife, or recreation. Site Preparation: Distribution of livestock watering sources should be such that animals need not travel more than 1 mile nor less than ½ mile between forage and a dependable water source on gentle terrain and not more than ½ mile nor less than ¼ mile on rough terrain. The pipeline shall have a capacity to supply the seasonal high daily water requirements from the source(s) of water to the watering facility for the total number of animals expected to be using the watering facility(ies) supplied by the pipeline. Establishment: Materials and installation procedures for the pipeline will meet the requirements found in Arizona NRCS conservation practice standard 516, Pipeline, and any supporting conservation practice standards. The installation specification will include and/or address capacity, pipe type, pipe size, installation method, drainage, vents, pressure relief (if needed), check valves (if needed), joints, screens (if needed), and protection. Operation and Maintenance: The NRCS lifespan of this conservation practice is 20 years. Operation and maintenance actions to be taken to maximize the life of the pipeline include regularly check to make sure all valves and vents are in and set at the operating condition, open and close all valves in a manner that controls or limits water hammer, maintain all screens and filters in good working condition and promptly repair or replace, maintain the design depth of cover over the pipeline, maintain any erosion protection necessary to protect the pipeline, limit traffic over the pipeline, remove all foreign debris that hinders system operation, drain all components in areas that are subject to freezing when the pipeline is not in use, in continuous flow pipeline systems maintain a continuous flow to avoid freezing, immediately repair any damage to the pipeline

Fields:

CONSERVATION PLAN OR SCHEDULE OF OPERATIONS

PARTICIPANT MANN RANCH LLC		COUNTY AND STATE PINAL County, AZ		PROGRAM AND CONTRACT NUMBER EQIP 2014 7494571400R				SUBACCOUNT Tucson Rangeland (Tucson)			
				WATERSHED Zapata Wash-San Pedro River				ACRES 7133		EXPIRATION DATE 8/31/2016	

Tract: 5266 Fields: 1;

Contract Item	Planned Conservation Treatment	Planned Amount	Unit Cost	Cost Share Rate/Method	COMPLETION SCHEDULE AND ESTIMATED COST-SHARE OR PAYMENT BY YEAR										
					2015 \$	2016 \$									
9	Livestock Pipeline(516)	200 ft				384									
9a	HU-HDPE (Iron Pipe Size & Tubing)	63 Lb	\$6.0900/ Lb	PR ¹		384									

Notes: ¹Payment rates define the unit cost rate of compensation to be received by the participant.

Contract Item 10: Watering Facility(614) **Practice Lifespan:** 20 years **Status:** Planned 2016

Purpose: The purpose of a watering facility (trough) is to protect and enhance vegetative cover through proper distribution of grazing, provide erosion control through better grazing management, and to protect streams, ponds and water supplies from contamination. Site Preparation: Distribution of livestock watering sources should be such that animals need not travel more than 1 mile nor less than ½ mile between forage and a dependable water source on gentle terrain and not more than ½ mile nor less than ¼ mile on rough terrain. The pipeline shall have a capacity to supply the seasonal high daily water requirements from the source(s) of water to the watering facility for the total number of animals expected to be using the watering facility(ies) supplied by the pipeline. Establishment: Materials and installation procedures for the trough will meet the requirements found in Arizona NRCS conservation practice standard 614, Watering Facility, and any supporting conservation practice standards. The installation specification will include and/or address capacity, material(s) used, float mechanism (if needed), inlet size, overflow provisions, installation method, drainage, and protection. Operation and Maintenance: The NRCS lifespan for this conservation practice is 10 years. Operation and maintenance activities include regular inspection to check for and correct as needed: debris, algae, sludge, sediment or other materials in the trough which may restrict the inflow, outflow or capacity of the trough, leaks, automatic water level device, outlet pipe is operating freely and not causing erosion problems, and corrosion or electrolysis.

Fields:
Tract: 5266 Fields: 1;

Contract Item	Planned Conservation Treatment	Planned Amount	Unit Cost	Cost Share Rate/Method	COMPLETION SCHEDULE AND ESTIMATED COST-SHARE OR PAYMENT BY YEAR										
					2015 \$	2016 \$									
10	Watering Facility(614)	1 no				1,704									
10a	HU-Permanent Drinking/Storage > 500-1000 Gallons	800 Gal	\$2.1300/ Gal	PR ¹		1,704									

Notes: ¹Payment rates define the unit cost rate of compensation to be received by the participant.

CONSERVATION PLAN OR SCHEDULE OF OPERATIONS

PARTICIPANT MANN RANCH LLC	COUNTY AND STATE PINAL County, AZ	PROGRAM AND CONTRACT NUMBER EQIP 2014 7494571400R	SUBACCOUNT Tucson Rangeland (Tucson)	
LAND UNITS OR LEGAL DESCRIPTION Farm:4959 Tract(s):5266.		WATERSHED Zapata Wash-San Pedro River	ACRES 7133	EXPIRATION DATE 8/31/2016

Total Cost-Share or Payment by Year										Total Contract Payment
Year	2015	2016								
Amount(\$)	\$30,194	\$10,176								\$40,370

NOTES: A. All items numbers on form NRCS-CPA-1155 must be carried out as part of this contract to prevent violation.
 B. When established, the conservation practices identified by the numbered items must be maintained by the participant at no cost to the government.
 C. All cost share rates are based on average cost (AC) with the following exceptions:
 AA = Actual cost not to exceed average cost; FR = Flat Rate; NC = Non cost-shared; AM = Actual cost not to exceed a specified maximum; PR = Payment rates.
 D. By signing, the participant acknowledges receipt of this conservation plan including this form NRCS-CPA-1155 and agrees to comply with the terms and conditions here of.

Certification of Participants					
Signature	Date	Signature	Date	Signature	Date
MANN RANCH LLC					

Signatures of Reviewing Officials	
Designated Conservationist - Technical Adequacy Certification Signature: KRISTEN EGEN Date: 6/30/2014	NRCS Approving Official Signature: Date:

<p>PARTICIPANT MANN RANCH LLC</p>	<p>COUNTY AND STATE PINAL County, AZ</p>	<p>PROGRAM AND CONTRACT NUMBER EQIP 2014 7494571400R</p>	<p>SUBACCOUNT Tucson Rangeland (Tucson)</p>	
<p>LAND UNITS OR LEGAL DESCRIPTION Farm:4959 Tract(s):5266.</p>		<p>WATERSHED Zapata Wash-San Pedro River</p>	<p>ACRES 7133</p>	<p>EXPIRATION DATE 8/31/2016</p>

PRIVACY ACT

The following statements are made in accordance with the Privacy Act of 1974 (5 U.S.C 522a). Furnishing this information is voluntary; however failure to furnish correct, complete information will result in the withholding or withdrawal of such technical or financial assistance. The information may be furnished to other USDA agencies, the Internal Revenue Service, the Department of Justice, or other state or federal law enforcement agencies, or in response to orders of a court, magistrate, or administrative tribunal.
This information collection is exempted from the Paperwork Reduction Act under 16 U.S.C. 3801 note and 16 U.S.C. 3846.

NONDISCRIMINATION STATEMENT

The U.S. Department of Agriculture (USDA) prohibits discrimination against its customers. If you believe you experienced discrimination when obtaining services from USDA, participating in a USDA program, or participating in a program that receives financial assistance from USDA, you may file a complaint with USDA. Information about how to file a discrimination complaint is available from the Office of the Assistant Secretary for Civil Rights.

USDA prohibits discrimination in all its programs and activities on the basis of race, color, national origin, age, disability, and where applicable, sex (including gender identity and expression), marital status, familial status, parental status, religion, sexual orientation, political beliefs, genetic information, reprisal, or because all or part of an individual's income is derived from any public assistance program. (Not all prohibited bases apply to all programs.)

To file a complaint of discrimination, complete, sign and mail a program discrimination complaint form, available at any USDA office location or online at www.ascr.usda.gov, or write to:

USDA



Or call toll free at [REDACTED] (voice) to obtain additional information, the appropriate office or to request documents. Individuals who are deaf, hard of hearing or have speech disabilities may contact USDA through the Federal Relay service at [REDACTED] or [REDACTED] (in Spanish). USDA is an equal opportunity provider, employer and lender.

Persons with disabilities who require alternative means for communication of program information (e.g., Braille, large print, audiotope, etc.) should contact USDA's TARGET Center at [REDACTED] (voice and TDD).