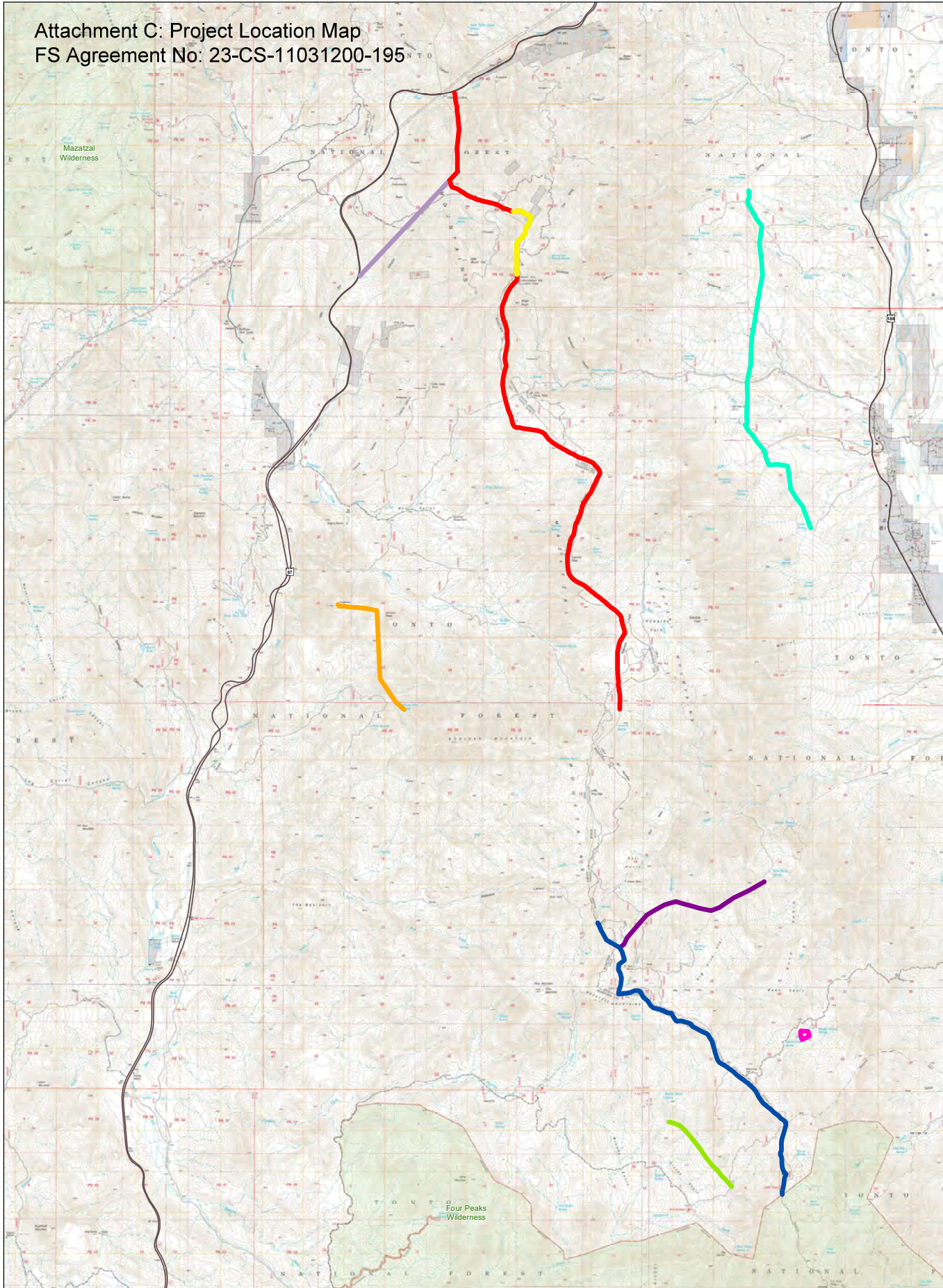


Attachment C: Project Location Map
 FS Agreement No: 23-CS-11031200-195



- Legend**
- Segment 1- 12.1 miles
 - Work Restricted Area March 1 to August 31
 - Segment 2- 6.9 miles
 - Segment 3- 2.4 miles
 - Segment 4- 2.6 miles
 - Segment 5- 2 miles
 - Segment 6- 5.6 miles
 - Segment 7- 0.50 miles
 - Segment 8- 1.5 miles
 - Wilderness

Service Layer Credits: Sources: Esri, HERE, Garmin, USGS, Intermap, INCREMENT P, NRCan, Esri Japan, METI, Esri China (Hong Kong), Esri Korea, Esri (Thailand), NGCC, (c) OpenStreetMap contributors, and the GIS User Community



This product is produced from geospatial information prepared by the U.S. Department of Agriculture, Forest Service. By removing the contents of this package or taking receipt of these files via electronic file transfer methods, you understand that the data stored on this media is in draft condition. Represented features may not be in an accurate geographic location. The Forest Service makes no expressed or implied warranty, including warranty of merchantability and fitness, with respect to the character, function, or capabilities of the data or their appropriateness for any user's purposes. The Forest Service reserves the right to correct, update, modify, or replace this geospatial information without notification. For more information, contact Tonto National Forest (602)225-5200.
 Date: 12/15/2022
 Data Projection: UTM Zone 12 NAD83 (meters)
 Map Scale: 1:381,992



Tonto National Forest

