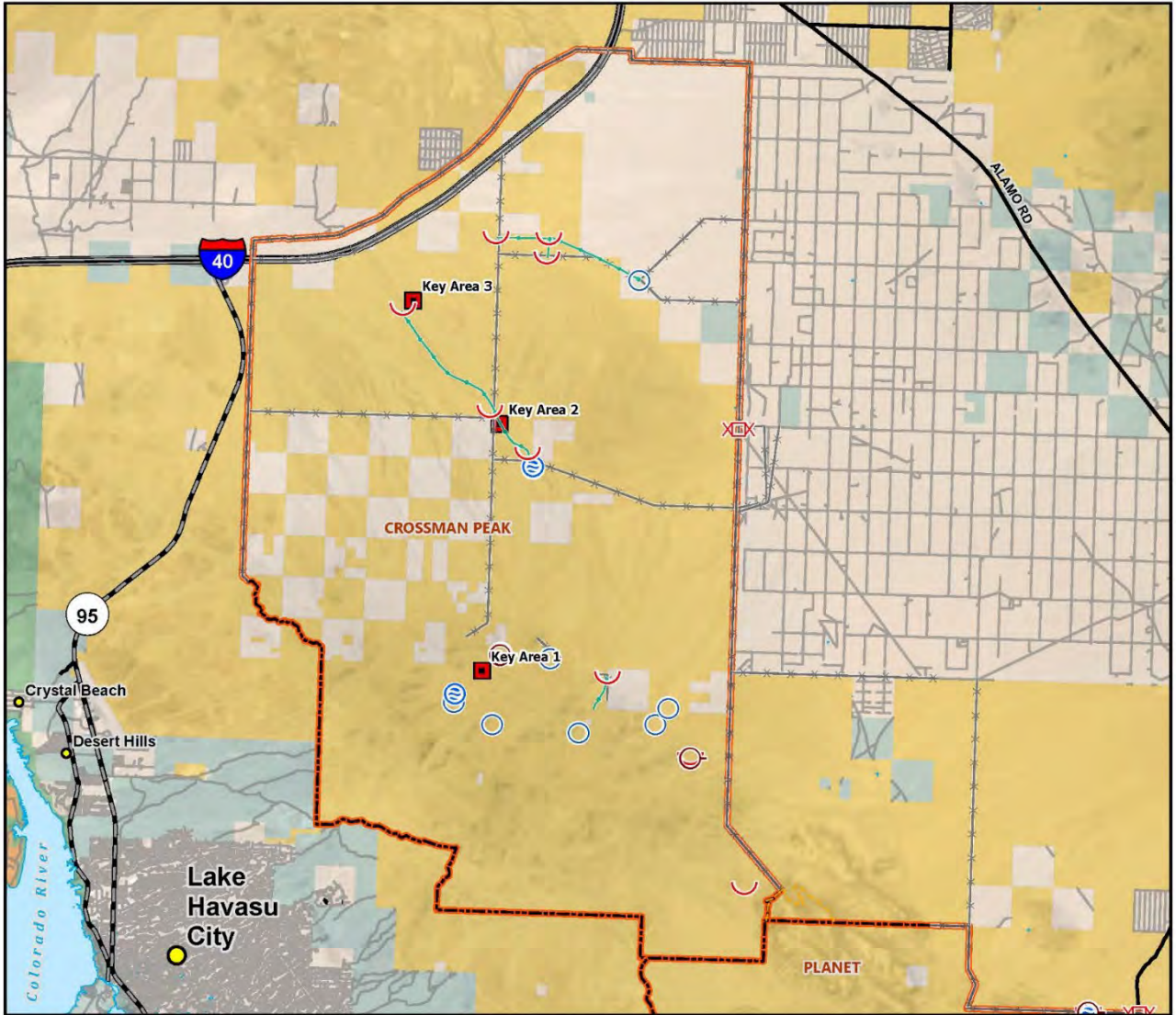


## **APPENDIX C – MAPS**

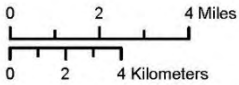


## Range Improvements: Crossman Peak

Colorado River District - Lake Havasu Field Office

### Range

- Key Area
- Well
- Unfenced Detention Reservoir
- Supplemental Storage Tank
- Trough
- Corrals and Loading Chutes Not Portable
- Cattleguard (Unspecified)
- Fence (Unspecified)
- Pipeline
- Unknown
- Grazing Allotment Boundary



### Transportation

- Interstate Highway
- State Highway
- County or Major Route
- Minor Routes

### Hydrography

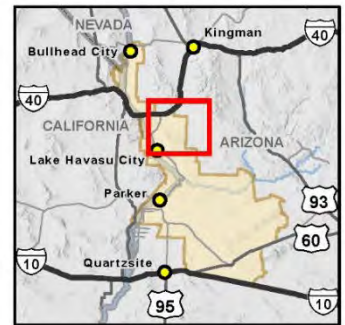
- River
- Waterbody



### Surface Management Agency

- Bureau of Land Management
- Bureau of Reclamation
- Local or State Parks
- Private
- State
- US Fish and Wildlife Service

### Map Location within the Lake Havasu Field Office

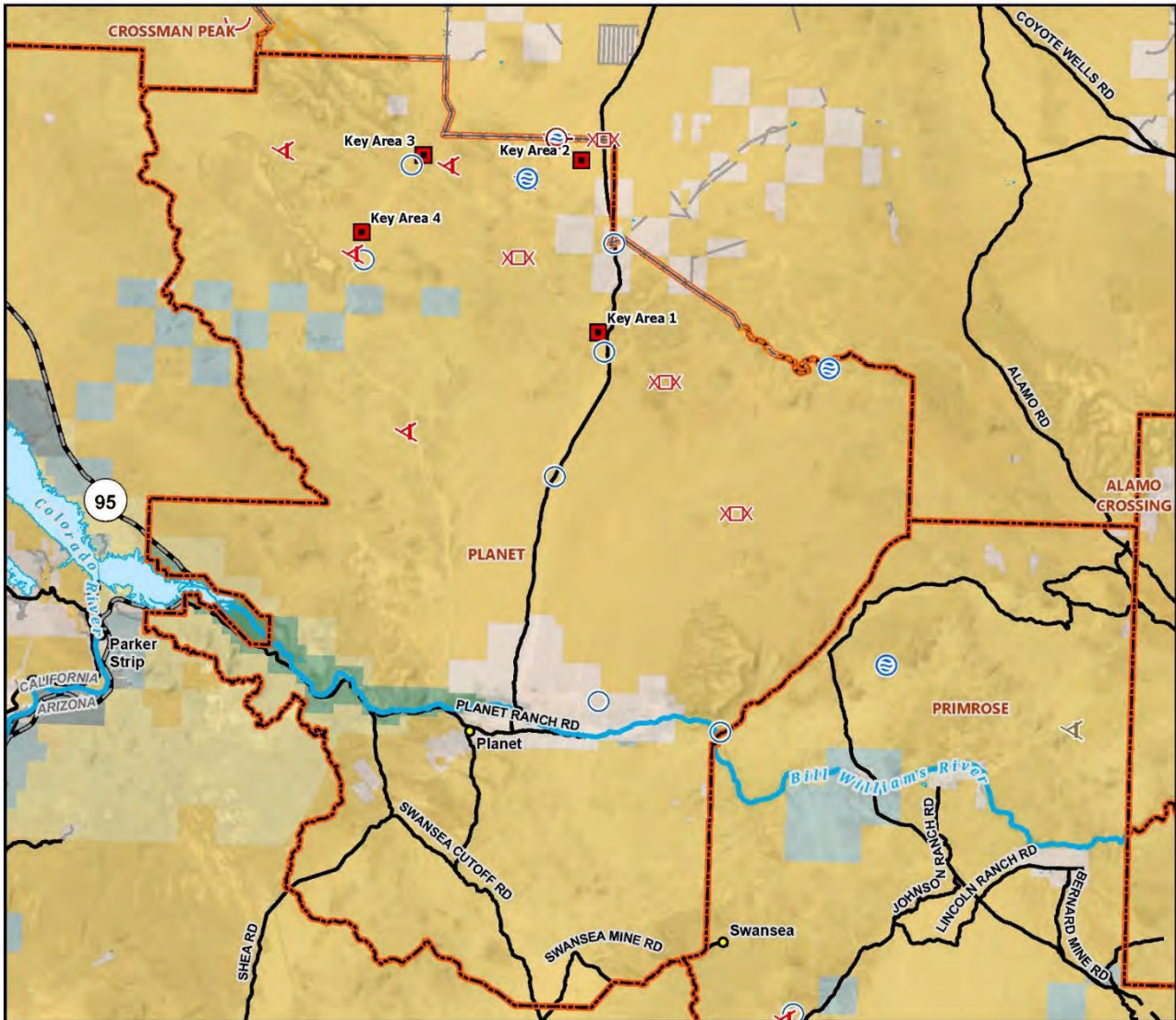


DISCLAIMER: No warranty is made by the Bureau of Land Management as to the accuracy, reliability, or completeness of these data for individual use or aggregate use with other data. Decisions in this document only apply to BLM lands. Routes depicted on non-BLM lands are displayed for information purposes only and do not grant access to non-BLM lands.

Map Produced by BLM Lake Havasu Field Office Staff  
 File: 2022\_CRD\_RIPS  
 Date: 6/24/2022  
 Map Scale: 1:240,000  
 Coordinate System: NAD 1983 UTM Zone 12N  
 AZ Reference System: U.S. PLSS GSR  
 CA Reference System: U.S. PLSS SBM



U.S. DEPARTMENT OF THE INTERIOR  
**BUREAU OF LAND MANAGEMENT**

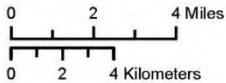


## Range Improvements: Planet

Colorado River District - Lake Havasu Field Office

### Range

- Key Area
- Well
- ▲ Retention Reservoir
- ▲ Unfenced Detention Reservoir
- ⊕ Supplemental Storage Tank
- ⤿ Trough
- Corrals and Loading Chutes Not Portable
- X Cattleguard (Unspecified)
- Fence (Unspecified)
- Unknown
- Grazing Allotment Boundary



### Transportation

- State Highway
- County or Major Route
- Minor Routes

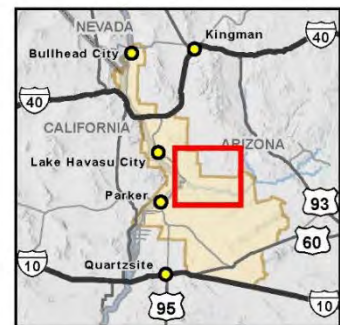
### Hydrography

- River
- Waterbody

### Surface Management Agency

- Bureau of Land Management
- Bureau of Reclamation
- Local or State Parks
- Private
- State
- US Fish and Wildlife Service

Map Location within the Lake Havasu Field Office

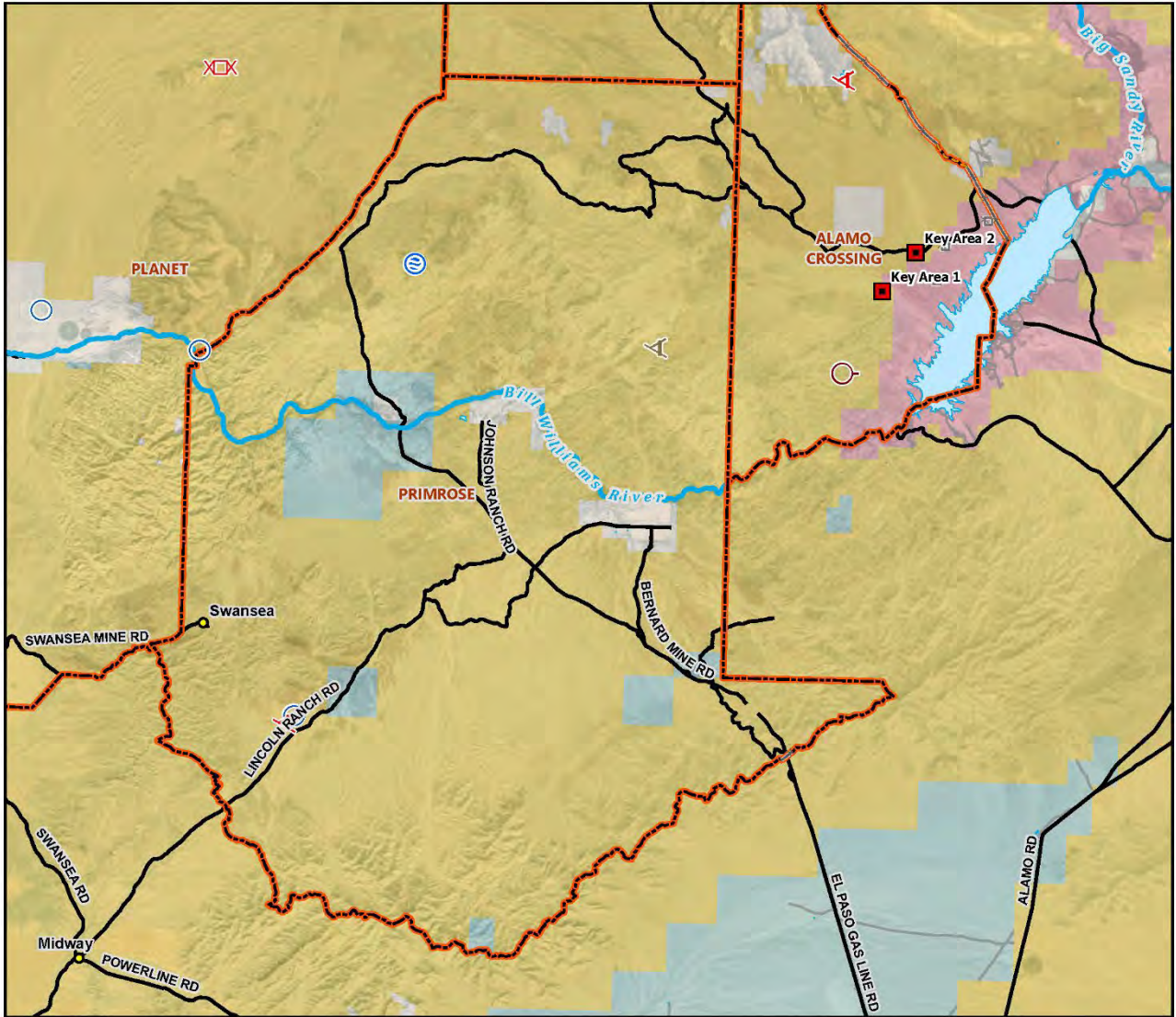


DISCLAIMER: No warranty is made by the Bureau of Land Management as to the accuracy, reliability, or completeness of these data for individual use or aggregate use with other data. Decisions in this document only apply to BLM lands. Routes depicted on non-BLM lands are displayed for information purposes only and do not grant access to non-BLM lands.

Map Produced by BLM Lake Havasu Field Office Staff  
 File: 2022\_CRD\_RIPS  
 Date: 6/24/2022  
 Map Scale: 1:260,001  
 Coordinate System: NAD 1983 UTM Zone 12N  
 AZ Reference System: U.S. PLSS GSR  
 CA Reference System: U.S. PLSS SBM



U.S. DEPARTMENT OF THE INTERIOR  
**BUREAU OF LAND MANAGEMENT**



# Range Improvements: Primrose

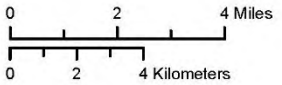
Colorado River District - Lake Havasu Field Office

- Range**
- Key Area
  - Well
  - ⚓ Retention Reservoir
  - ⚓ Unfenced Detention Reservoir
  - ⊕ Supplemental Storage Tank
  - Corrals and Loading Chutes Not Portable
  - ✂ Cattleguard (Unspecified)
  - Fence (Unspecified)
  - Unknown
  - Grazing Allotment Boundary

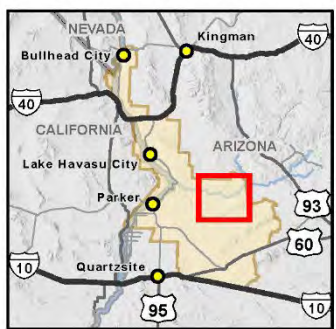
- Transportation**
- County or Major Route
  - Minor Routes

- Surface Management Agency**
- Bureau of Land Management
  - Military
  - Private
  - State

- Hydrography**
- River
  - Waterbody



Map Location within the Lake Havasu Field Office

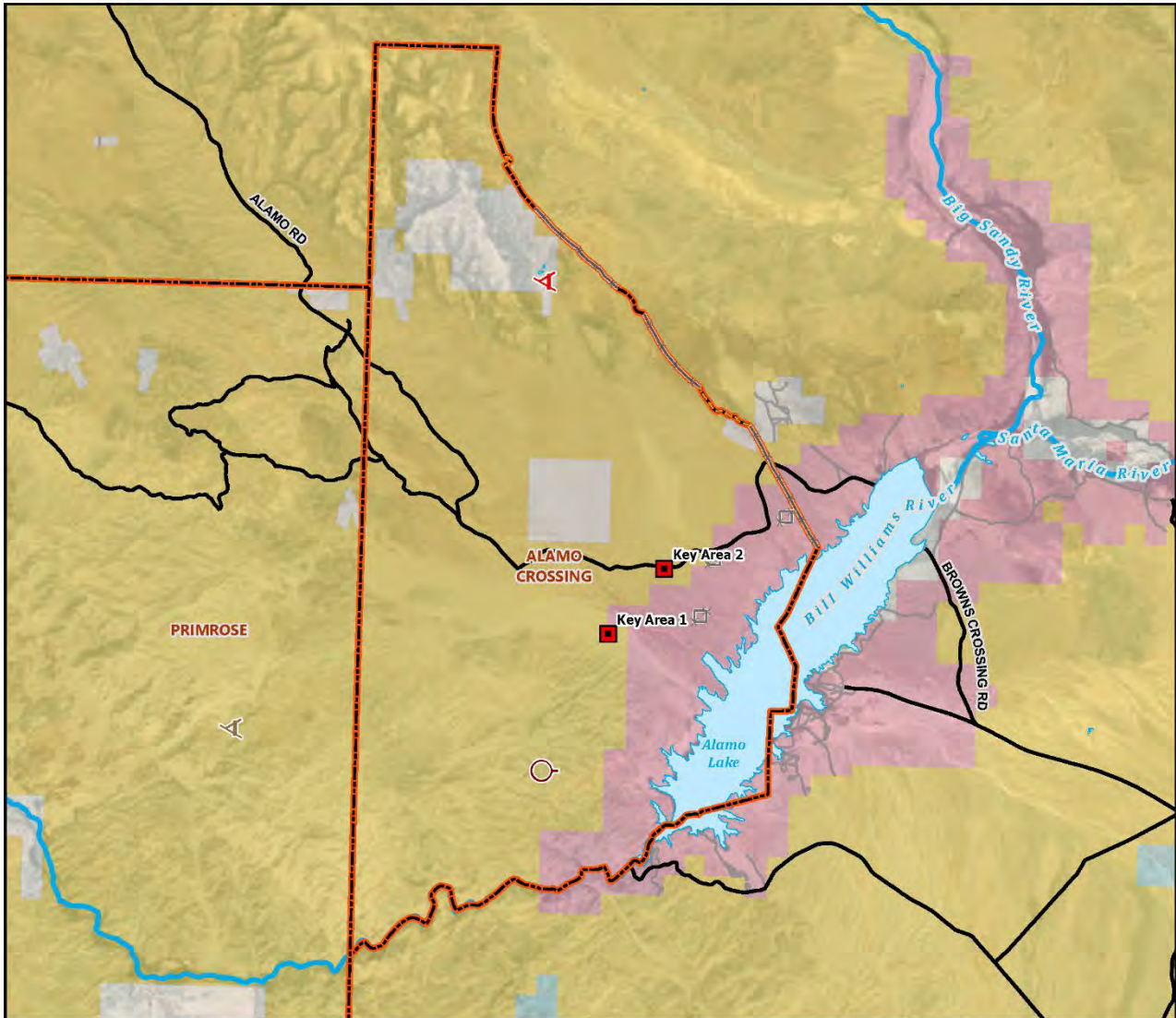


DISCLAIMER: No warranty is made by the Bureau of Land Management as to the accuracy, reliability, or completeness of these data for individual use or aggregate use with other data. Decisions in this document only apply to BLM lands. Routes depicted on non-BLM lands are displayed for information purposes only and do not grant access to non-BLM lands.

Map Produced by BLM Lake Havasu Field Office Staff  
 File: 2022\_CRD\_RIPS  
 Date: 6/24/2022  
 Map Scale: 1:200,000  
 Coordinate System: NAD 1983 UTM Zone 12N  
 AZ Reference System: U.S. PLSS GSR  
 CA Reference System: U.S. PLSS SBM



U.S. DEPARTMENT OF THE INTERIOR  
**BUREAU OF LAND MANAGEMENT**



## Range Improvements: Alamo Crossing

Colorado River District - Lake Havasu Field Office

### Range

- Key Area
- ▲ Retention Reservoir
- ▲ Unfenced Detention Reservoir
- Corrals and Loading Chutes Not Portable
- Fence (Unspecified)
- Unknown
- Grazing Allotment Boundary

### Transportation

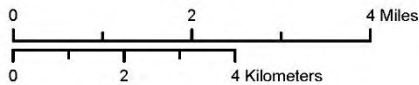
- County or Major Route
- Minor Routes

### Hydrography

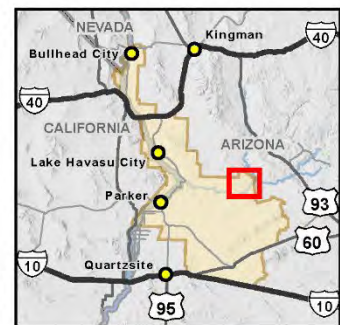
- River
- Waterbody

### Surface Management Agency

- Bureau of Land Management
- Military
- Private
- State



Map Location within the Lake Havasu Field Office

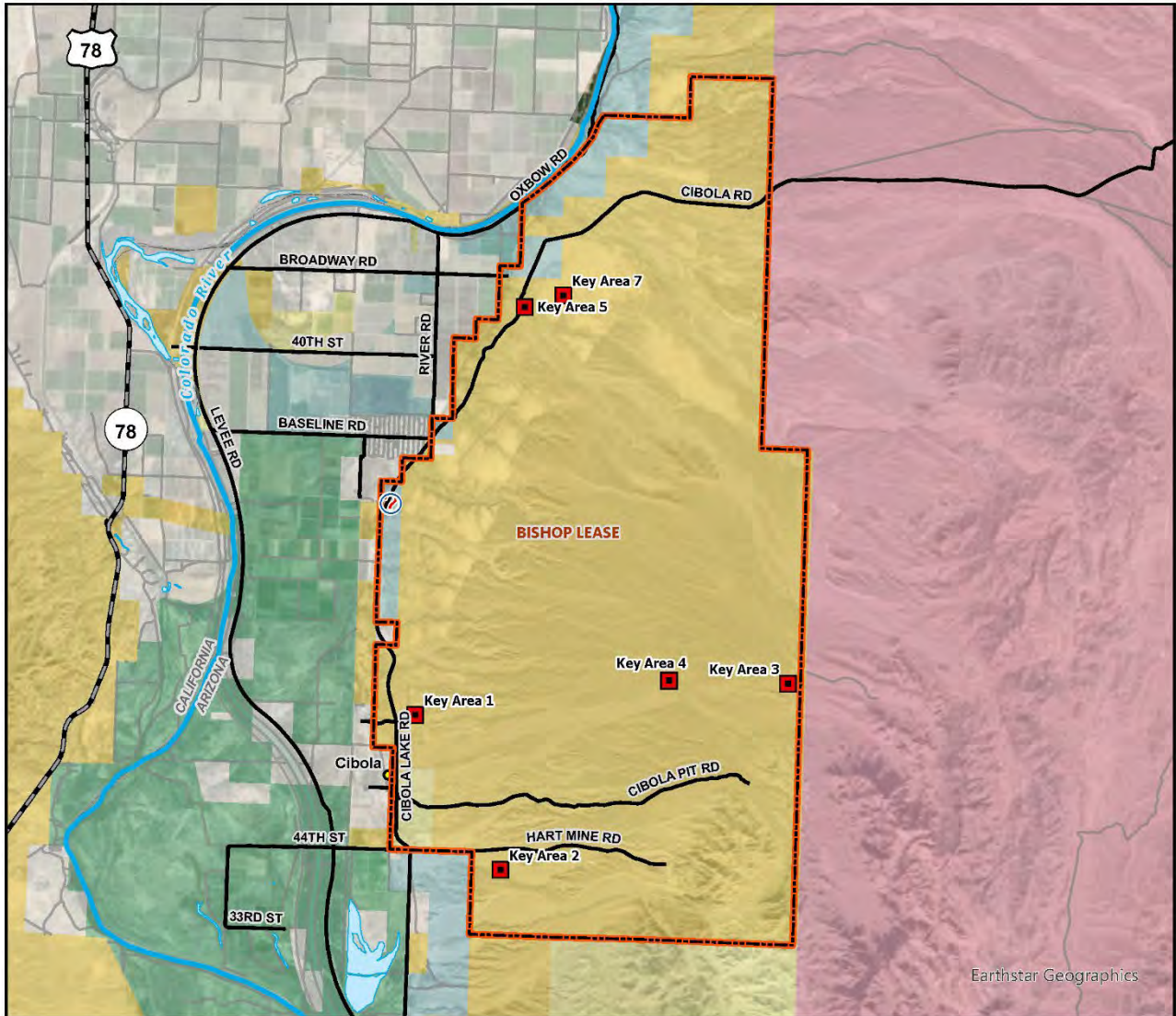


DISCLAIMER: No warranty is made by the Bureau of Land Management as to the accuracy, reliability, or completeness of these data for individual use or aggregate use with other data. Decisions in this document only apply to BLM lands. Routes depicted on non-BLM lands are displayed for information purposes only and do not grant access to non-BLM lands.

Map Produced by BLM Lake Havasu Field Office Staff  
 File: 2022\_CRD\_RIPS  
 Date: 6/24/2022  
 Map Scale: 1:120,000  
 Coordinate System: NAD 1983 UTM Zone 12N  
 AZ Reference System: U.S. PLSS GSR  
 CA Reference System: U.S. PLSS SBM



U.S. DEPARTMENT OF THE INTERIOR  
**BUREAU OF LAND MANAGEMENT**



## Range Improvements: Bishop Lease

### Colorado River District - Yuma Field Office

#### Range

- Key Area
- Well
- Grazing Allotment Boundary

#### Transportation

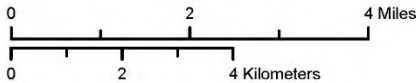
- U.S. Highway
- State Highway
- County or Major Route
- Minor Routes

#### Hydrography

- River
- Waterbody

#### Surface Management Agency

- Bureau of Land Management
- Bureau of Reclamation
- Military
- Private
- State
- US Fish and Wildlife Service



Map Location within the Yuma Field Office

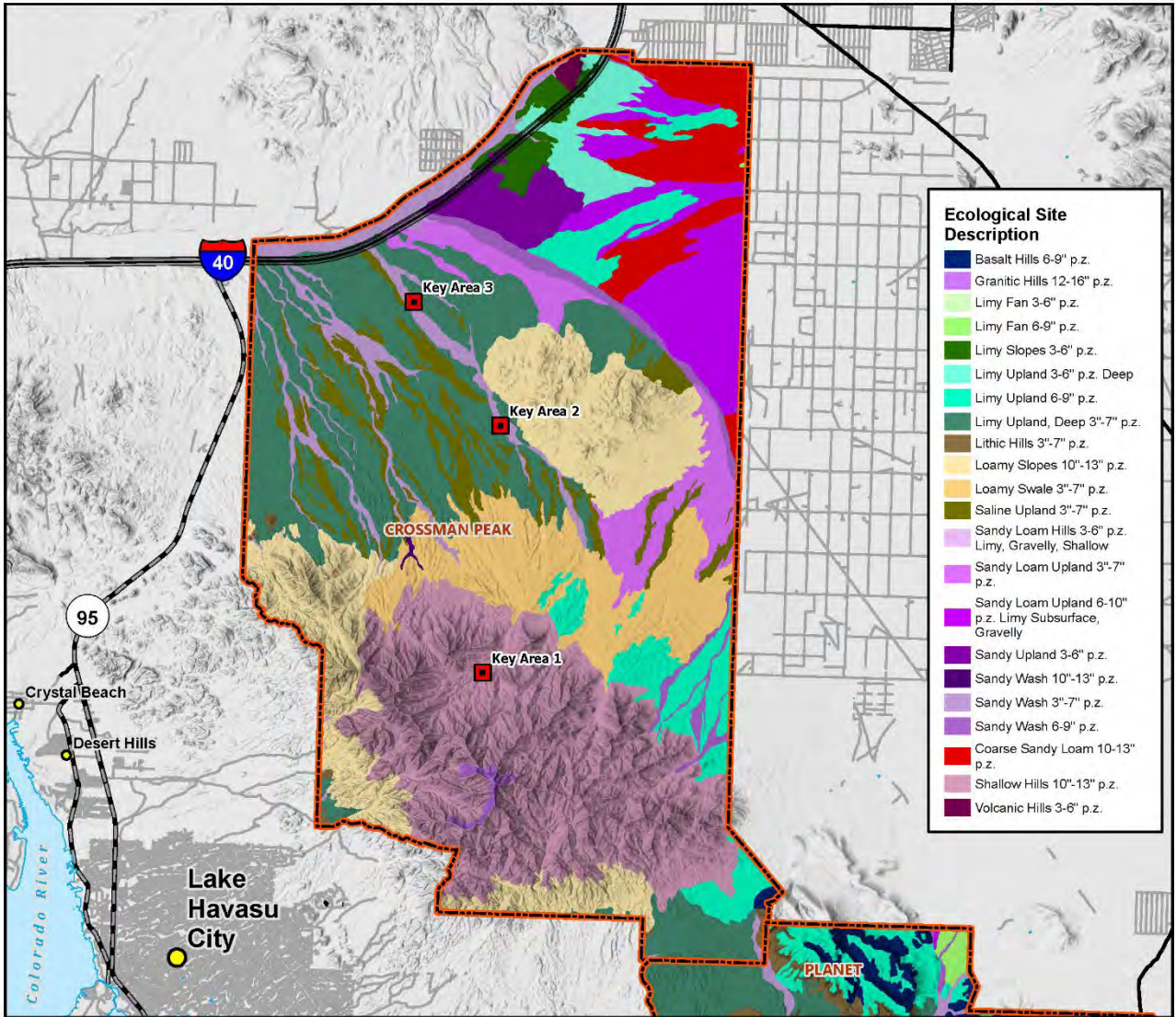


DISCLAIMER: No warranty is made by the Bureau of Land Management as to the accuracy, reliability, or completeness of these data for individual use or aggregate use with other data. Decisions in this document only apply to BLM lands. Routes depicted on non-BLM lands are displayed for information purposes only and do not grant access to non-BLM lands.

Map Produced by BLM Yuma Field Office Staff  
 File: 2022\_CRD\_RIPS  
 Date: 6/24/2022  
 Map Scale: 1:120,000  
 Coordinate System: NAD 1983 UTM Zone 12N  
 AZ Reference System: U.S. PLSS GSR  
 CA Reference System: U.S. PLSS SBM



U.S. DEPARTMENT OF THE INTERIOR  
**BUREAU OF LAND  
 MANAGEMENT**



Ecological Site Description	
Dark Blue	Basalt Hills 6-9" p.z.
Purple	Granitic Hills 12-16" p.z.
Light Purple	Limy Fan 3-6" p.z.
Light Green	Limy Fan 6-9" p.z.
Dark Green	Limy Slopes 3-6" p.z.
Light Cyan	Limy Upland 3-6" p.z. Deep
Medium Cyan	Limy Upland 6-9" p.z.
Dark Cyan	Limy Upland, Deep 3"-7" p.z.
Brown	Lithic Hills 3"-7" p.z.
Yellow	Loamy Slopes 10"-13" p.z.
Orange	Loamy Swale 3"-7" p.z.
Dark Yellow	Saline Upland 3"-7" p.z.
Light Purple	Sandy Loam Hills 3-6" p.z. Limy, Gravelly, Shallow
Medium Purple	Sandy Loam Upland 3"-7" p.z.
Dark Purple	Sandy Loam Upland 6-10" p.z. Limy Subsurface, Gravelly
Very Dark Purple	Sandy Upland 3-6" p.z.
Black	Sandy Wash 10"-13" p.z.
Light Purple	Sandy Wash 3"-7" p.z.
Medium Purple	Sandy Wash 6-9" p.z.
Red	Coarse Sandy Loam 10-13" p.z.
Light Red	Shallow Hills 10"-13" p.z.
Dark Red	Volcanic Hills 3-6" p.z.

## Ecological Sites: Crossman Peak

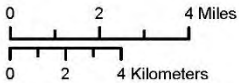
Colorado River District - Lake Havasu Field Office

### Range

- Key Area
- Grazing Allotment Boundary

### Hydrography

- River
- Waterbody



### Transportation

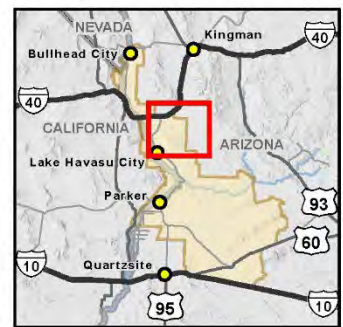
- Interstate Highway
- State Highway
- County or Major Route
- Minor Routes

### Administrative Units

- City
- Town or Place of Interest
- State Boundary



Map Location within the Lake Havasu Field Office

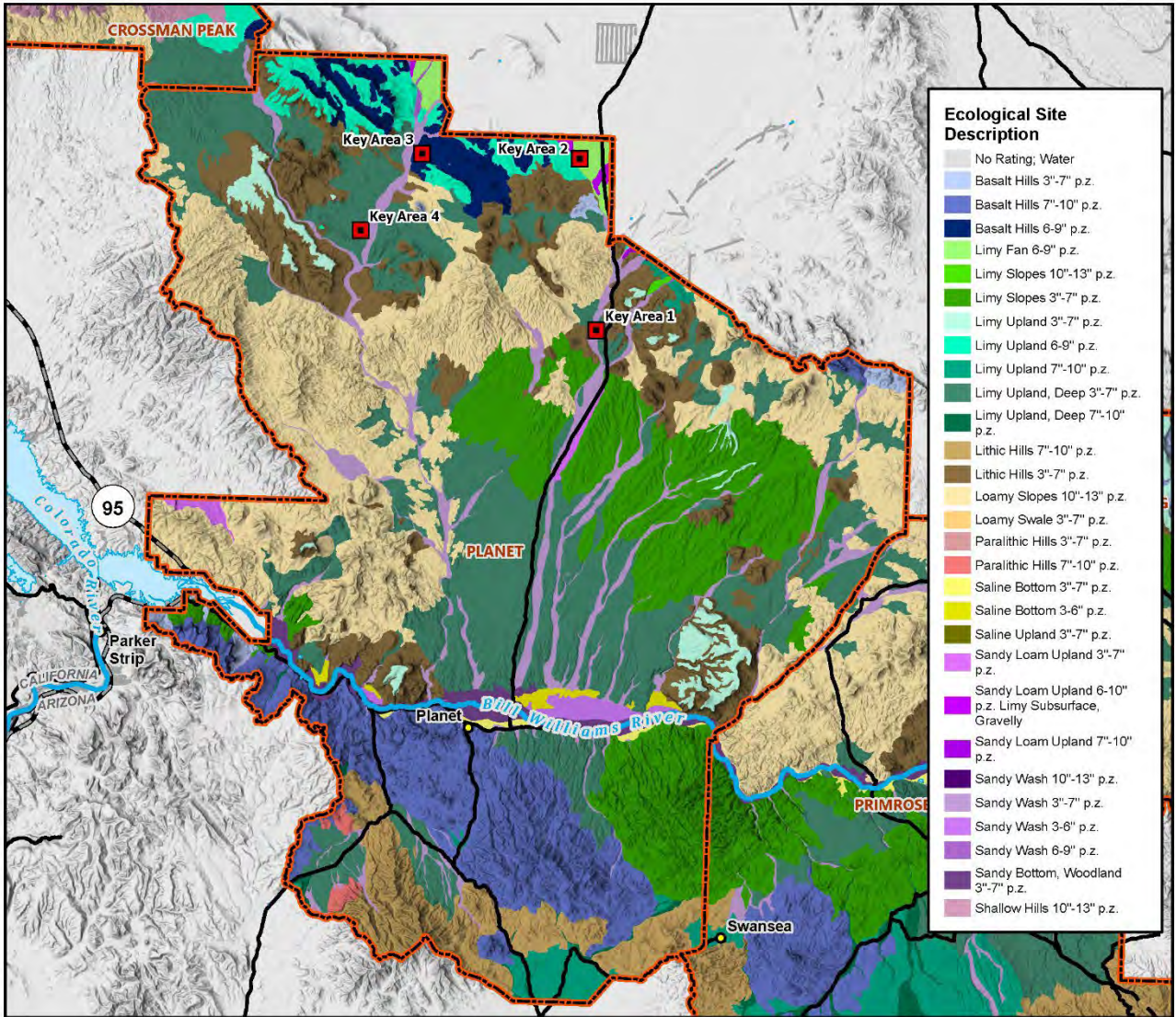


DISCLAIMER: No warranty is made by the Bureau of Land Management as to the accuracy, reliability, or completeness of these data for individual use or aggregate use with other data. Decisions in this document only apply to BLM lands. Routes depicted on non-BLM lands are displayed for information purposes only and do not grant access to non-BLM lands.

Map Produced by BLM Lake Havasu Field Office Staff  
 File: 2022\_LHFO\_BWC\_Soils  
 Date: 6/24/2022  
 Map Scale: 1:240,000  
 Coordinate System: NAD 1983 UTM Zone 12N  
 AZ Reference System: U.S. PLSS GSR  
 CA Reference System: U.S. PLSS SBM



U.S. DEPARTMENT OF THE INTERIOR  
**BUREAU OF LAND MANAGEMENT**



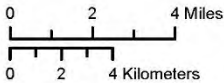
**Ecological Sites: Planet**  
 Colorado River District - Lake Havasu Field Office

- Range**
- Key Area
  - Grazing Allotment Boundary

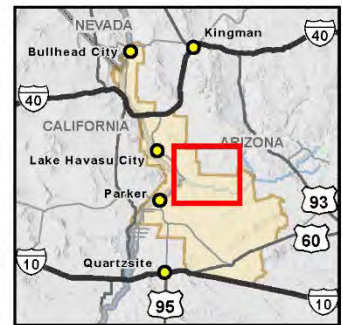
- Transportation**
- State Highway
  - County or Major Route
  - Minor Routes

- Administrative Units**
- Town or Place of Interest
  - State Boundary

- Hydrography**
- River
  - Waterbody



Map Location within the Lake Havasu Field Office



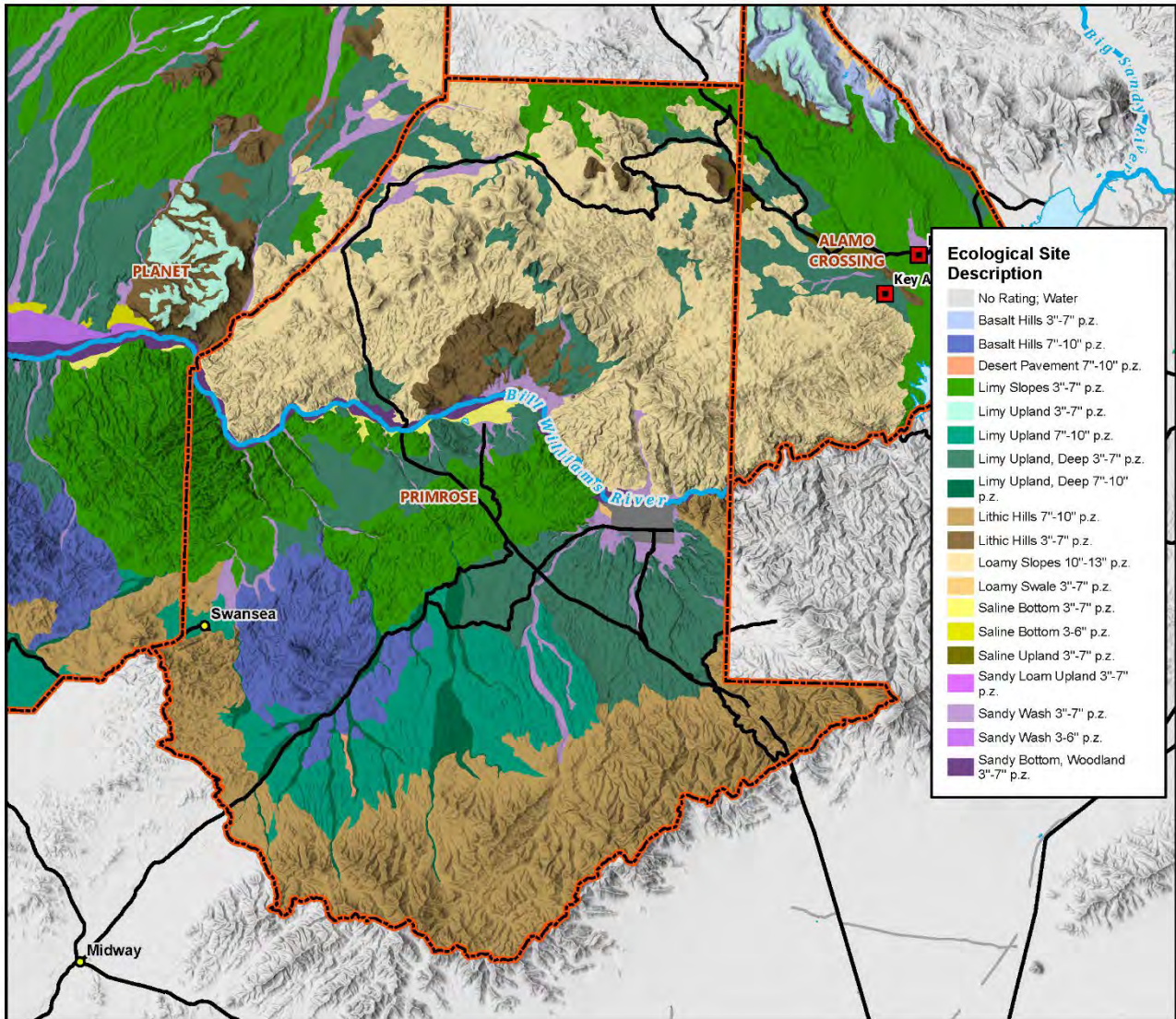
DISCLAIMER: No warranty is made by the Bureau of Land Management as to the accuracy, reliability, or completeness of these data for individual use or aggregate use with other data. Decisions in this document only apply to BLM lands. Routes depicted on non-BLM lands are displayed for information purposes only and do not grant access to non-BLM lands.

Map Produced by BLM Lake Havasu Field Office Staff  
 File: 2022\_LHFO\_BWC\_Soils  
 Date: 6/24/2022  
 Map Scale: 1:260,001  
 Coordinate System: NAD 1983 UTM Zone 12N  
 AZ Reference System: U.S. PLSS GSR  
 CA Reference System: U.S. PLSS SBM



U.S. DEPARTMENT OF THE INTERIOR  
**BUREAU OF LAND MANAGEMENT**





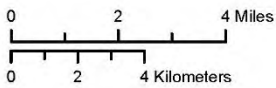
Ecological Site Description	
[Light Blue]	No Rating; Water
[Medium Blue]	Basalt Hills 3"-7" p.z.
[Dark Blue]	Basalt Hills 7"-10" p.z.
[Orange]	Desert Pavement 7"-10" p.z.
[Light Green]	Limy Slopes 3"-7" p.z.
[Medium Green]	Limy Upland 3"-7" p.z.
[Dark Green]	Limy Upland 7"-10" p.z.
[Teal]	Limy Upland, Deep 3"-7" p.z.
[Dark Teal]	Limy Upland, Deep 7"-10" p.z.
[Light Brown]	Lithic Hills 7"-10" p.z.
[Medium Brown]	Lithic Hills 3"-7" p.z.
[Light Orange]	Loamy Slopes 10"-13" p.z.
[Yellow-Orange]	Loamy Swale 3"-7" p.z.
[Yellow]	Saline Bottom 3"-7" p.z.
[Light Yellow]	Saline Bottom 3-6" p.z.
[Light Purple]	Saline Upland 3"-7" p.z.
[Medium Purple]	Sandy Loam Upland 3"-7" p.z.
[Dark Purple]	Sandy Wash 3"-7" p.z.
[Lightest Purple]	Sandy Wash 3-6" p.z.
[Darkest Purple]	Sandy Bottom, Woodland 3"-7" p.z.

## Ecological Sites: Primrose

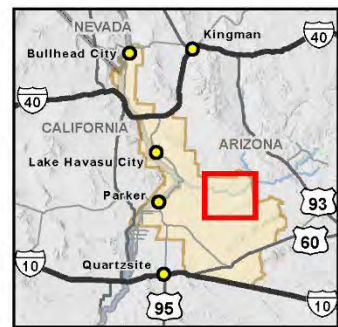
Colorado River District - Lake Havasu Field Office

- |                            |                       |                             |
|----------------------------|-----------------------|-----------------------------|
| <b>Range</b>               | <b>Transportation</b> | <b>Administrative Units</b> |
| Key Area                   | County or Major Route | Town or Place of Interest   |
| Grazing Allotment Boundary | Minor Routes          |                             |

- Hydrography**
- River
  - Waterbody



Map Location within the Lake Havasu Field Office

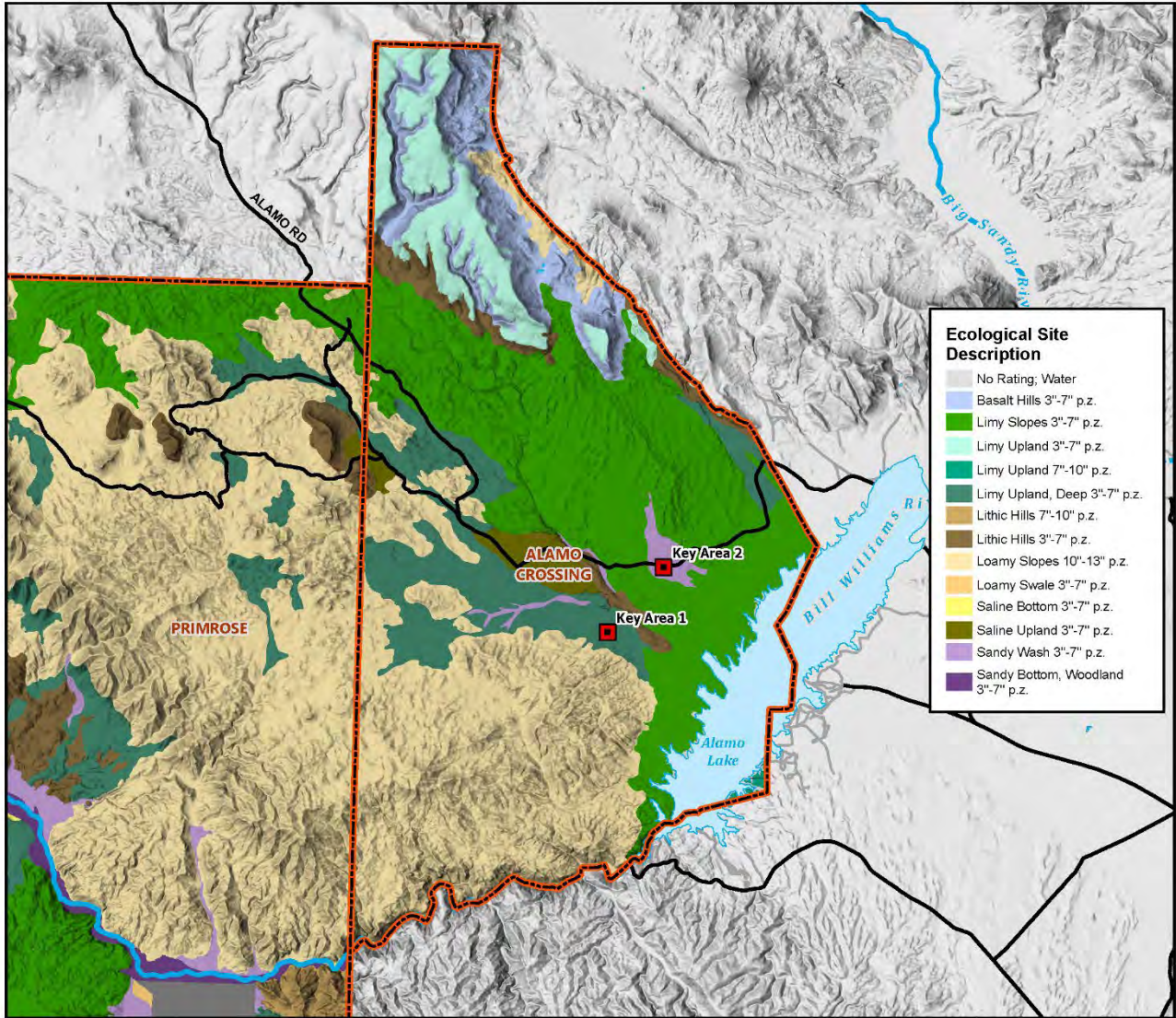


DISCLAIMER: No warranty is made by the Bureau of Land Management as to the accuracy, reliability, or completeness of these data for individual use or aggregate use with other data. Decisions in this document only apply to BLM lands. Routes depicted on non-BLM lands are displayed for information purposes only and do not grant access to non-BLM lands.

Map Produced by BLM Lake Havasu Field Office Staff  
 File: 2022\_LHFO\_BWC\_Soils  
 Date: 6/24/2022  
 Map Scale: 1:200,000  
 Coordinate System: NAD 1983 UTM Zone 12N  
 AZ Reference System: U.S. PLSS GSR  
 CA Reference System: U.S. PLSS SBM



U.S. DEPARTMENT OF THE INTERIOR  
**BUREAU OF LAND MANAGEMENT**



## Ecological Sites: Alamo Crossing

Colorado River District - Lake Havasu Field Office

### Range

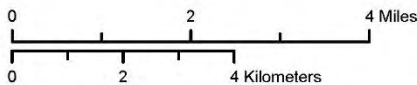
- Key Area
- Grazing Allotment Boundary

### Transportation

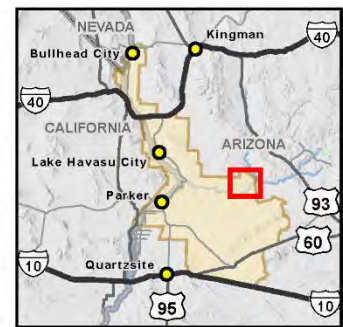
- County or Major Route
- Minor Routes

### Hydrography

- River
- Waterbody



### Map Location within the Lake Havasu Field Office

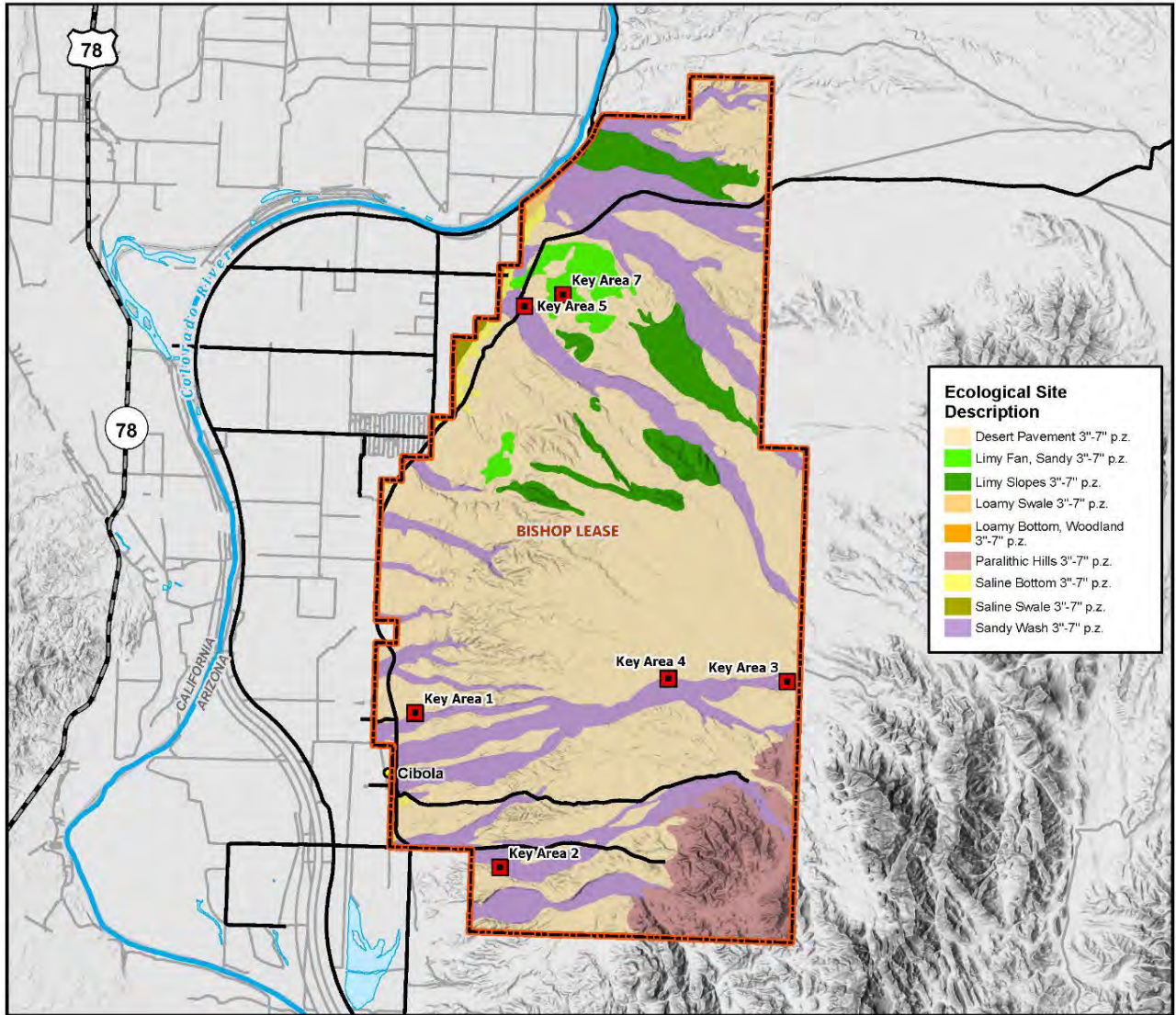


DISCLAIMER: No warranty is made by the Bureau of Land Management as to the accuracy, reliability, or completeness of these data for individual use or aggregate use with other data. Decisions in this document only apply to BLM lands. Routes depicted on non-BLM lands are displayed for information purposes only and do not grant access to non-BLM lands.

Map Produced by BLM Lake Havasu Field Office Staff  
 File: 2022\_LHFO\_BWC\_Soils  
 Date: 6/24/2022  
 Map Scale: 1:120,000  
 Coordinate System: NAD 1983 UTM Zone 12N  
 AZ Reference System: U.S. PLSS GSR  
 CA Reference System: U.S. PLSS SBM



U.S. DEPARTMENT OF THE INTERIOR  
**BUREAU OF LAND  
 MANAGEMENT**



Ecological Site Description	
	Desert Pavement 3"-7" p.z.
	Limy Fan, Sandy 3"-7" p.z.
	Limy Slopes 3"-7" p.z.
	Loamy Swale 3"-7" p.z.
	Loamy Bottom, Woodland 3"-7" p.z.
	Paralithic Hills 3"-7" p.z.
	Saline Bottom 3"-7" p.z.
	Saline Swale 3"-7" p.z.
	Sandy Wash 3"-7" p.z.

## Ecological Sites: Bishop Lease

Colorado River District - Yuma Field Office

### Range

- Key Area
- Grazing Allotment Boundary

### Hydrography

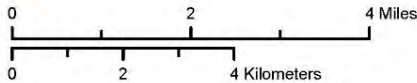
- River
- Waterbody

### Transportation

- U.S. Highway
- State Highway
- County or Major Route
- Minor Routes

### Administrative Units

- Town or Place of Interest
- State Boundary



### Map Location within the Yuma Field Office

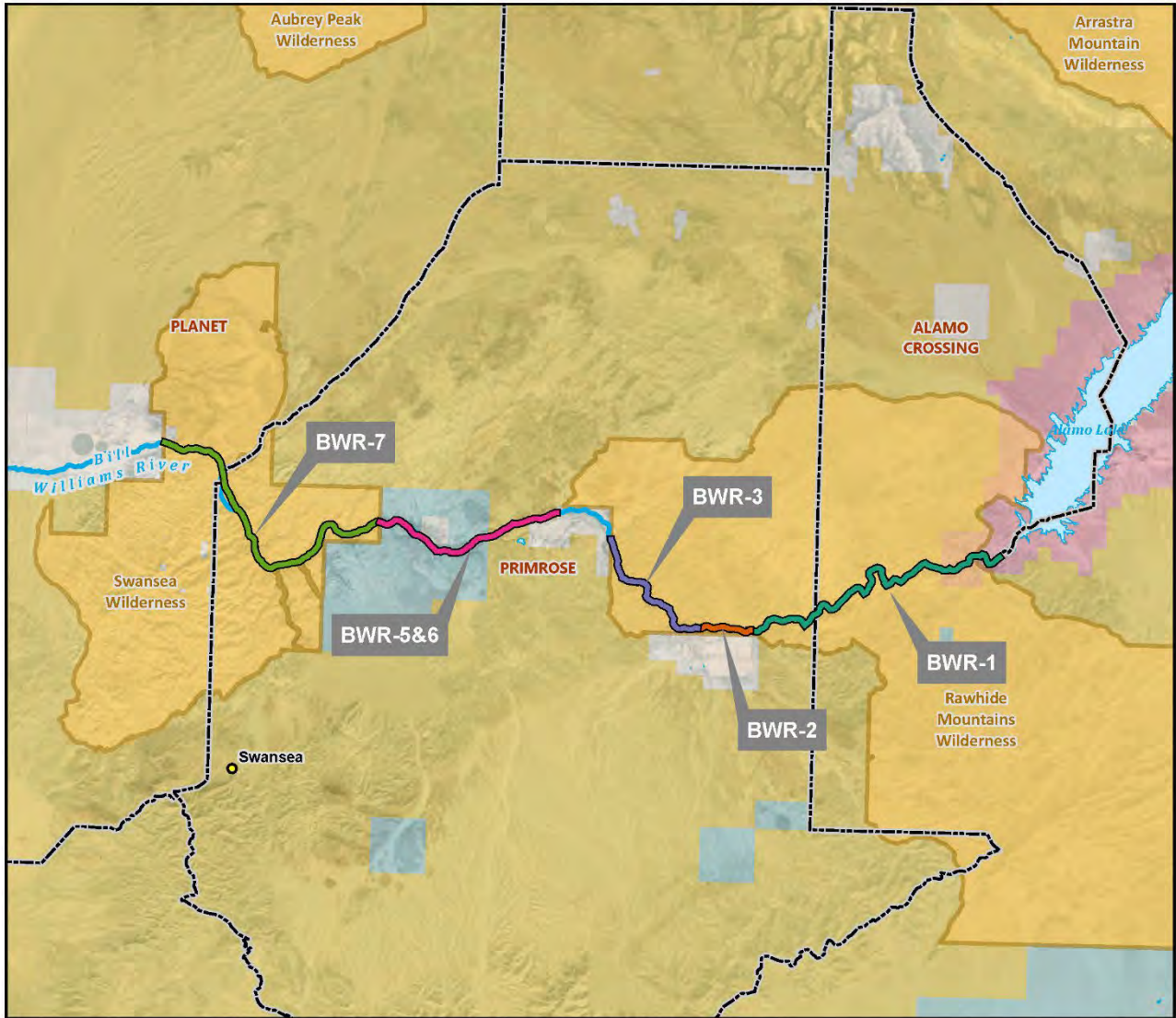


DISCLAIMER: No warranty is made by the Bureau of Land Management as to the accuracy, reliability, or completeness of these data for individual use or aggregate use with other data. Decisions in this document only apply to BLM lands. Routes depicted on non-BLM lands are displayed for information purposes only and do not grant access to non-BLM lands.

Map Produced by BLM Yuma Field Office Staff  
 File: 2022\_LHFO\_Bishop\_Soils  
 Date: 6/24/2022  
 Map Scale: 1:120,000  
 Coordinate System: NAD 1983 UTM Zone 12N  
 AZ Reference System: U.S. PLSS GSR  
 CA Reference System: U.S. PLSS SBM



U.S. DEPARTMENT OF THE INTERIOR  
**BUREAU OF LAND MANAGEMENT**



## Proper Functioning Condition (PFC) Monitoring - Bill Williams River

Colorado River District - Lake Havasu Field Office

Map Location within the Lake Havasu Field Office

### PFC River Reach

Local Identifier

BWR-1

BWR-2

BWR-3

BWR-5&6

BWR-7

### Range

Grazing Allotment Boundary

### Hydrography

River

Waterbody

### Surface Management Agency

Bureau of Land Management

Military

Private

State

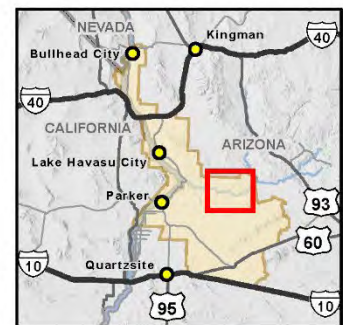
### Wilderness

Wilderness Area Boundary

Federal Land within Wilderness Area

0 2 4 Miles

0 2 4 Kilometers



DISCLAIMER: No warranty is made by the Bureau of Land Management as to the accuracy, reliability, or completeness of these data for individual use or aggregate use with other data. Decisions in this document only apply to BLM lands. Routes depicted on non-BLM lands are displayed for information purposes only and do not grant access to non-BLM lands.

Map Produced by BLM Lake Havasu Field Office Staff  
 File: 2022\_LHFO\_BWRPFC  
 Date: 6/24/2022  
 Map Scale: 1:180,000  
 Coordinate System: NAD 1983 UTM Zone 12N  
 AZ Reference System: U.S. PLSS GSR  
 CA Reference System: U.S. PLSS SBM



U.S. DEPARTMENT OF THE INTERIOR  
**BUREAU OF LAND  
 MANAGEMENT**