

ANTELOPE HILLS ALLOTMENT 2017 ANNUAL OPERATING INSTRUCTIONS

PLANNING OBJECTIVES

- Identification of specific management tools/resource objectives and constraints for this grazing season.
- Review general permit administration and livestock management requirements.
- Document any needs or agreements beyond the standard directions.

AUTHORIZATION

Upon payment of fees livestock are authorized as follows for 2017:

Number of Livestock	Pasture	Grazing Period
62 Cows 5 Bulls	West Mesa / Cress Spring	3/1 – 5/15
62 Cows 5 Bulls	Packard Trail country	5/16 – 8/15
62 Cows 5 Bulls	Baker’s Pass Tank / upper SOB	8/16 – 10/15
62 Cows 5 Bulls	Pocket	10/15 – 12/15

The Forest Officer must be given actual use, by pasture.

Any change from these Annual Operating Instructions is to be coordinated and confirmed in advance with the Forest Officer, best if a week or two in advance. If emergency conditions require making a change immediately, notify the Forest Officer promptly.

Move your livestock regardless of the dates shown above to avoid exceeding allowable use levels. If utilization levels are appropriate then livestock moves must be 90% accomplished by the dates given above.

You are responsible for your representatives and/or employees following all Forest Officer instructions.

MANAGEMENT TOOLS

Follow forage and browse use standards. Utilization needs to be at a level that allows for sufficient litter to protect soils and watershed conditions and provide an opportunity for perennial grasses and major browse species to maintain or improve their vigor. Minimizing forage use in areas livestock prefer is important. Some encouraged practices are closing off waters, moving salt, and herding.

- *Perennial Grasses:* Utilization will not exceed 40% use on key forage species in key areas at the time livestock are removed from the pasture. On soils of sandstone parent material, utilization will not exceed 30% in key areas on key forage species at the time livestock are moved from the pasture.
- *On shrubs:* Forty percent of available leaders may be browsed. Cattle will be moved to the next scheduled pasture or off the allotment when allowable use standards are met, regardless of the planned move dates shown below.
- Failure to remove cattle to avoid use above the allowable levels is a violation of these instructions and the terms of the grazing permit.
- The thoughtful placement of salt, mineral, and protein is a valuable distribution aid. Do not place salt, protein, or other supplements in heavy use areas or within a ¼ mile of water (this includes seeps and springs). Instead, place supplements to draw livestock to areas that normally receive only light use.

RANGE IMPROVEMENT CONSTRUCTION OR BETTERMENT

Maintenance will follow the standards in your Part 3 of your grazing permit. In addition to routine maintenance, the following is planned for this year:

- Complete construction of Packard Trail Trick Tank
- Clean sediment traps at Upper and Lower Mormon tanks
- Coordinate with Horseshoe Allotment to clean sediment trap at Baker's Pass tank
- Rebuild Corrals at Baker's Pass tank
- Install FS provided escape ramps at Black Seep Water Haul.

MANAGEMENT COMMENTS

- Contact Range Managers with any adjustments to livestock numbers.
- Continue to work together to keep unauthorized cattle out of the Verde River pasture.
- Establish key areas and implement a monitoring plan that includes production.
- Livestock will be kept in one herd, and moved as scheduled, and accurate records must be kept for use in analysis of vegetation

PERMIT CONDITIONS

Trailing to/from base property across neighboring Forest Allotments is allowed if

1. The livestock involved are authorized and are enroute to permitted allotments.
2. The livestock involved are trailed over established driveways and make no overnight stops on NFS lands, and such an action does not result in resource damage and is not incompatible with other uses.
3. To accommodate requirements of permit to graze less than 52 weeks. Whole herd each direction. -
4. To move yearlings and cull old or sick animals or bulls off of allotment.
5. To move replacement livestock or return bulls to the allotment.

In order for the Forest to properly document/monitor impact to the resource please notify Forest officer of each move, one week prior, and if move is cancelled. It is the permittee's responsibility to coordinate with adjacent permittee during moves.

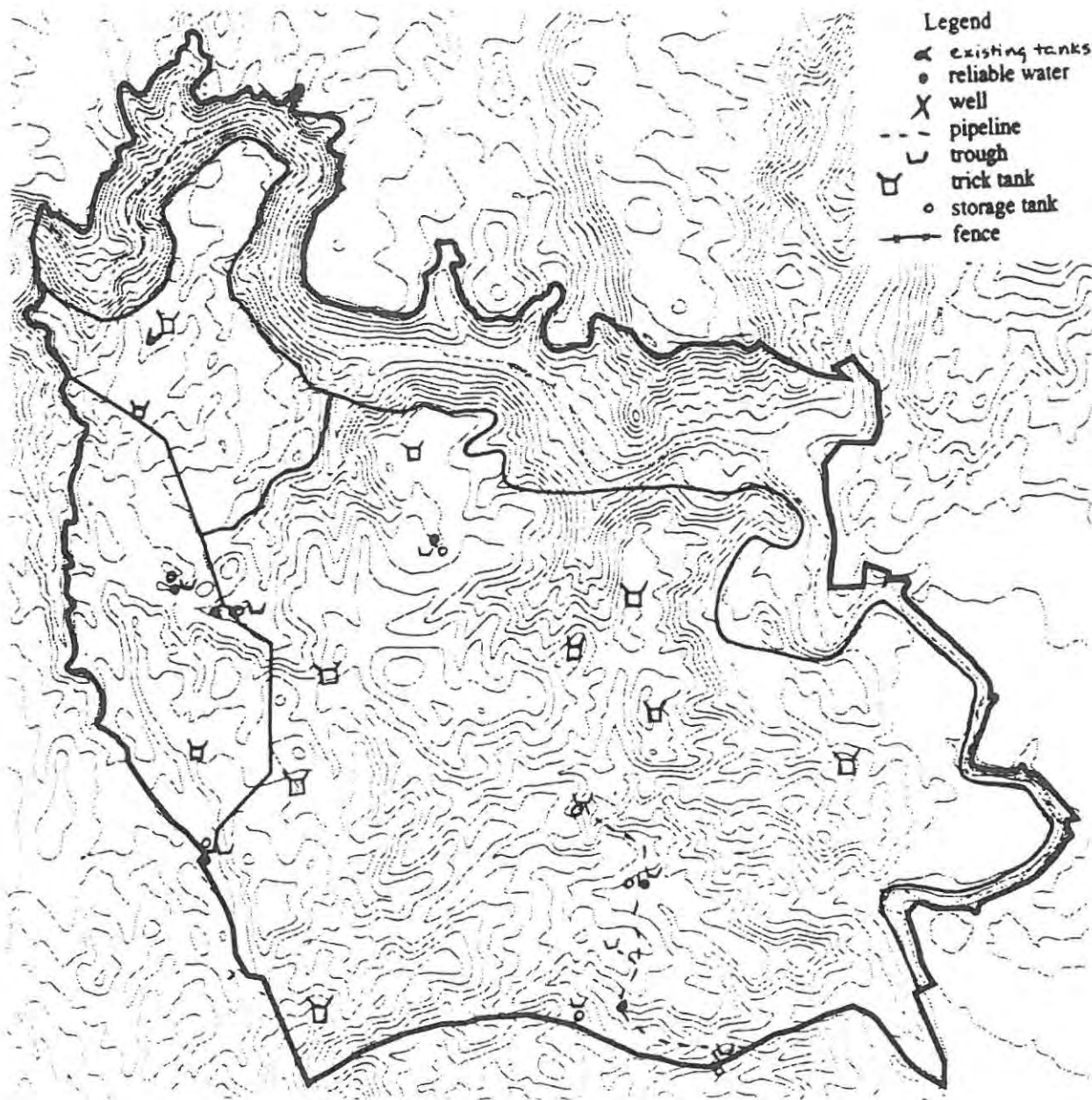
The Prescott National Forest designated a system of roads and trails that are open to motor vehicle use in 1989 through Forest Plan Amendment #4. Motor vehicle use off the designated road system by the permit holder to conduct activities associated with administration of the term grazing permit is allowed under the terms and conditions of the term grazing permit.

These Annual Operating Instructions are a part of the Term Grazing Permit as provided for in Part 2, Section 8(a). They comply with the standards and guidelines found in the Forest Plan. Failure to follow any of the terms and conditions specified in Parts 1, 2, and 3 of your Term Grazing Permit may result in suspension or cancellation, in whole or in part, after written notice. (Refer to Part 1, Section 3, of your permit.)

AGREED TO BY: *[Signature]* 2-28-17
 Permittee Date

APPROVED BY: *[Signature]* 2/28/17
 Omero Torres, District Ranger Date

Antelope Hills Allotment Alternative 5, 6



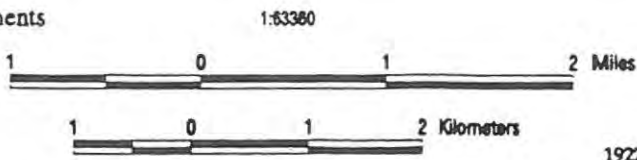
- Legend
- ◻ existing tanks
 - reliable water
 - X well
 - - - pipeline
 - U trough
 - ◻ trick tank
 - storage tank
 - fence

100 foot contours

Purpose: Template of existing improvements to copy and use for the development of various grazing alternatives.

Source: Prescott National Forest

Date: October 25, 1999



1927 North American Datum
UTM Zone 12