

# Allotment Inspection Report

**Date:**  
2021/08/26

**District:**  
30103

**Allotment:**  
Alma Mesa

**Pasture:**  
North Stateline

**Key Area:** Yes, C5  
**Examiner(s):** E. Sanchez, J. Dees  
**Permittee Present:** No  
**Others Present:** Yes

## Livestock Presence/Absence

**Livestock present:** No

**Number Observed:**

-----

## Utilization- Landscape Appearance Method

<b>Site location Type</b> Sideslope	<b>Time of Monitoring</b> Pre-Grazing Season
<b>Estimated date for beginning of period of use:</b>	<b>Estimated date for end of period of use:</b>
<b>Number of Animals:</b>	<b>Kind and/or Class of Animal:</b>
<b>Key Species:</b> Side oats, hairy/blue gramma	

Class Interval	Tally	Midpoint	Tally * Midpoint
0-5%	0	2.5	0
6-20%	0	13	0
21-40%	0	30	0
41-60%	0	50	0
61-80%	0	70	0
81-100%	0	90	0

**Average Utilization:** 0

**Standard Met?** Yes



**Veg Height Photo**

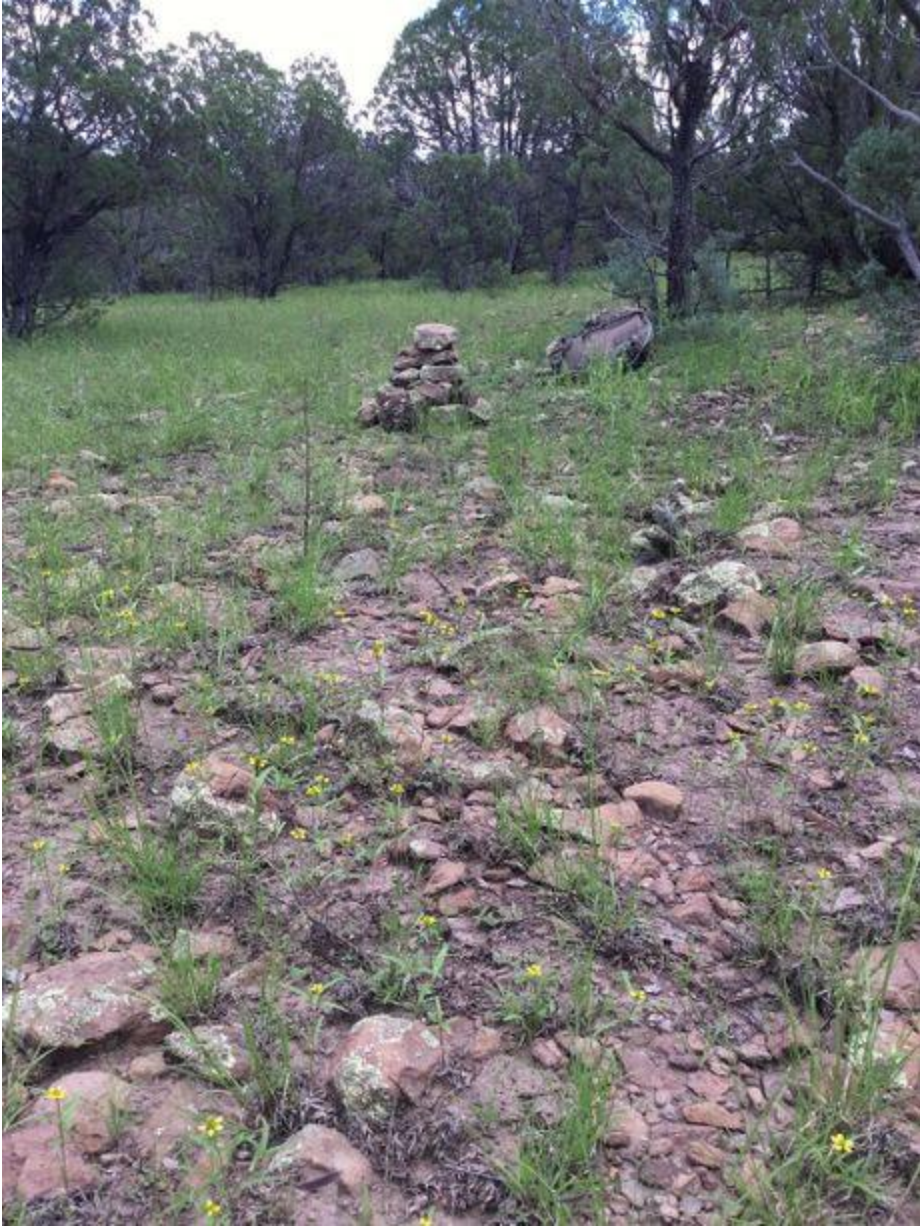


**Groundcover Photo**





**Landscape Photo Looking North**



Landscape Photo Looking East





**Landscape Photo Looking South**



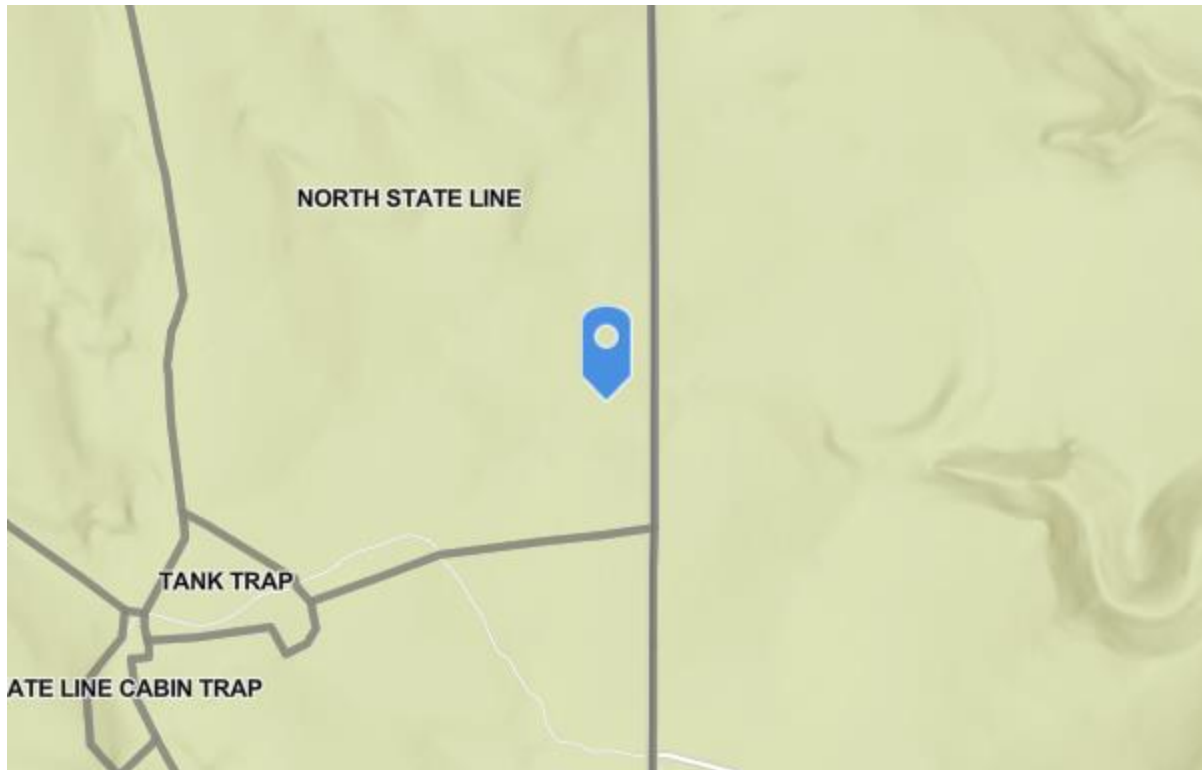
**Landscape Photo Looking West**





**Veg height 2 blue gramma**





Esri, NASA, NGA, USGS, FEMA | Esri Community Maps Contributors, Esri, HERE, Garmin, ... Powered by Esri

**Map (1:24000 Scale)**

**General Location**

**UTM** 12S 681433E 3701657N **Latitude** 33.43898248396203, **Longitude:** -109.0482161008837

## Utilization- Stubble Height

\*\*\* No use observed

# Production Estimates- Clip and Weigh

Using a 0.96 sq. ft. hoop, weigh the forage in Grams (less the bag weight) and times by 10 for pounds per acre.

Sample 1	
Sample 2	
Sample 3	
Sample 4	
Sample 5	
Sample 6	
Sample 7	
Sample 8	
Sample 9	
Sample 10	
Total Wet LBS per Acre	
% Air-dry Weight	
Total Dry lbs per Acre	320

\*\*\* all loop clippings were put into one sample bag. Dried and weighed back at district office. Forage production measured in the middle of growing season.

# Range Readiness, Plant Phenology, & Vigor

**Grass Species:** Blue Grama (BOGR)

**Grass Phenology:** Headed out

**Grass Stubble Height Inches:** 14

-----

**Grass Species:** Side oats

**Grass Phenology:** Headed out

**Grass Stubble Height Inches:** 16

-----

**Other Indicators:** Grasses headed out, low mortality,