



Outcome Based Grazing

In August, 2017, the BLM began a new initiative for Outcome Based Grazing Authorizations (OBGA). Under this initiative, BLM will work with livestock operators to develop OBGA that provide greater flexibility for adjusting grazing use due to changing conditions in order to achieve specific vegetative, habitat, and livestock operation sustainability objectives. The BLM selected 11 demonstration projects that will use grazing authorizations as a framework for livestock operators to demonstrate their ability to achieve habitat and vegetation objectives by providing them flexibility to exercise their knowledge, experience and stewardship. For example, rather than specifying dates for moving between pastures or having strict on/off dates, management will focus on achieving end results using indicators like grazing utilization patterns (using utilization studies) and seasonal use/rest balance for the goal of balancing forage and habitat resources for the greatest mutual gain.

As the demonstration projects progress, they will give BLM and its partners information and experience for developing consistent national policy to implement outcome based grazing as a standard practice. Local knowledge and experience will provide the foundation for broader implementation, providing BLM with a consistent approach to working with permittees to provide authorizations that meet conservation and restoration needs on public lands while meeting economic and social needs simultaneously.

Individual Project Updates

Lakeview Oregon, Fitzgerald Ranch - The project is focused on improving riparian areas and grazing cheatgrass strategically and purposefully based on phenology. The project is complete and the field office is working with the permittees to implement and conduct field monitoring.

Burns Oregon, Roaring Springs Ranch - The project is focused on the reduction of cheatgrass to improve

ecological processes and reduce fire risk, improving riparian conditions, addressing juniper expansion, and coordinating grazing between livestock and wild horses. The field office is in the process of completing the Land Health Assessment and Evaluation (expected by early 2020), which will be followed by completing the appropriate National Environmental Policy Act (NEPA) analysis.

Craig Colorado, Little Snake L. & L. - The project focuses on providing opportunities to manage across habitat needs and landscapes to balance the cross-ownership management and provide flexibility to respond to habitat and ecological needs annually. The field office is in the process of completing the NEPA analysis.

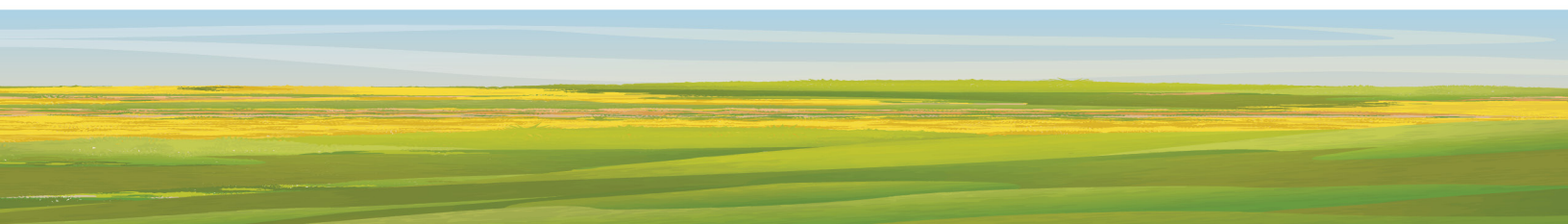
Rawlins Wyoming, P.H. Livestock - The project is focused on providing flexibility that will allow all six allotments to be managed together in order to balance uses and needs. The field office is in the process of completing the NEPA analysis.

Lewistown Montana, Elk Creek - The project is temporarily on hold due to a vacant staff position. The field office hopes to complete the Land Health Assessment/Evaluation and environmental assessment by the end of 2019 (dependent on staffing).

Twin Falls Idaho, Deep Creek Ranch LLC - This project focuses on being able to maintain and improve wildlife habitat through vegetation treatments in crested wheatgrass seedings while maintaining the integrity and functionality of the livestock operation.

The permittee is implementing the flexibility in the new permit and 2019 is the first year of implementing the monitoring plan.

Carson City Nevada, Smith Creek Ranch - This project focuses on improving riparian and upland habitat for the variety of conditions and resources present. The project area provides habitat for sage grouse and Lahontan cutthroat trout, as well as other wildlife and





associated habitat. Management will focus on cheatgrass control, Pinyon and juniper management, as well as monitoring and potentially helping manage wild horse over-populations. The field office is in the process of completing the Land Health Assessment and Evaluation (expected by early 2020), which will be followed by completing the appropriate NEPA analysis.

Battle Mountain Nevada, Willow Ranch - The project will focus on maintaining or increasing deep-rooted natives, maintaining or attaining proper functioning condition of riparian areas, and maintain seeding health. In addition, this project has a goal of integrating Private land, BLM managed land and Forest Service managed land into a comprehensive management plan. The field office is in the process of completing the Land Health Assessment and Evaluation, which will be followed by completing the appropriate NEPA analysis.

Ely Nevada, Uhalde Ranch - The focus of this project includes improving or maintaining ecological conditions while providing the flexibility to respond to weather, and other changes in conditions, and changes in livestock kind. This project also has wild horse over-populations on the north of the project area, and finding a balance between appropriate livestock grazing and managed wild horse populations is a main goal of this project. The field office is in the process of completing the Land Health Assessment and Evaluation, which will be followed by completing the appropriate NEPA analysis.

Elko Nevada, Horseshoe - This project focuses on managing and improving cheatgrass dominated landscapes through the implementation of strategic timing of grazing. This project strives to address a cheatgrass dominated landscape with minimal intermixed native perennials in order to stop the conversion to a cheatgrass monoculture while simultaneously decreasing any fire size, intensity and behavior. The project is temporarily on hold due to a vacant staff position. The field office is in the process of updating the project timeline.

Elko Nevada, Winecup-Gamble - This project focuses on increasing resiliency to fire, maintaining and improving wildlife habitat and riparian resources, and improving the condition of the land for all uses. The development of objectives ensuring the social, cultural and economic viability and enhancement is also central to this project. The project will integrate new monitoring techniques which could prove to be affordable and functional for informing management. The field office is in the process of completing the Land Health Assessment and Evaluation, which will be followed by completing the appropriate NEPA analysis.

